

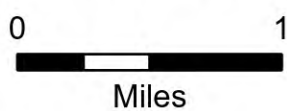
Flat REPAIR

OR-RSF-000209

9/13/2023

Div W East

34,242 acres at 9/7/2023 2120

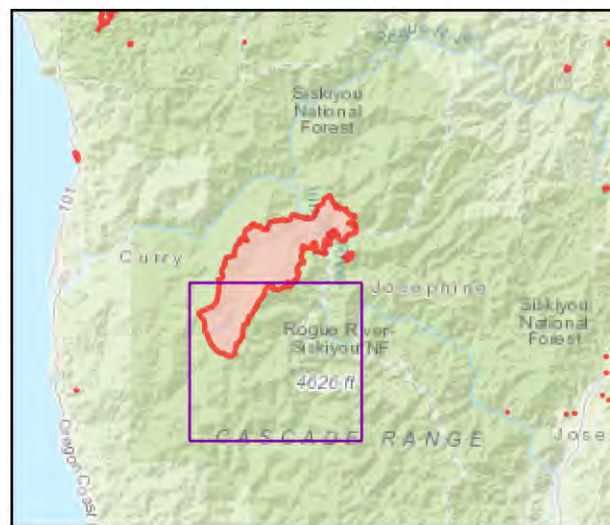


- Repair Status**
- Needs Assessment
 - Repair Needed
 - In Progress
 - Completed - Inspected
 - Needs Assessment
 - Repair Needed
 - In Progress
 - Completed - Ready for Inspection
 - Completed - Inspected
- Other Symbols**
- Dip Site
 - ⊗ Helispot
 - ⊗ Division Break
 - ⊗ Drop Point
 - ⊗ Closure
 - ⊗ Lookout
 - ⊗ Hot Spot - Spot Fire
 - ⊗ Value at Risk
 - ⊗ Other
 - Landmark
 - ⊗ Gate
 - ⊗ Bridge
 - ⊗ Stream Crossing
 - ⊗ Road Repair
 - ⊗ Repair Point
 - ⊗ Landing or Log Deck
 - ⊗ Dozer Push
 - ⊗ Culvert
 - ⊗ Mobile Weather Unit
 - ⊗ Internet Access
 - ⊗ Repeater
 - ⊗ Hazard
 - ⊗ Water Source
 - ⊗ Restricted Water Source
 - ⊗ Pump
 - ⊗ Completed Dozer Line
 - ⊗ Completed Fuel Break
 - ⊗ Completed Hand Line
 - ⊗ Completed Road as Line
 - ⊗ Access or Improved Road
 - ⊗ Temporary Flight Restriction
 - ⊗ Contained
 - ⊗ Uncontained

Event Points
NO Repair Points IF Repair Status = "No Repair Needed"

Repair Status - Points
NO Repair Status = "In Use" or "No Repair Needed"

Repair Status Lines
NO Access Roads or Road as Line
NO Repair Status = "In Use" or "No Repair Needed"



Scan for digital maps



9/13/2023 2155

NAD 1983 2011 Datum, LatLong Grid

