

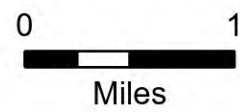
# Flat REPAIR

OR-RSF-000209

9/13/2023

Div W West

34,242 acres at 9/7/2023 2120

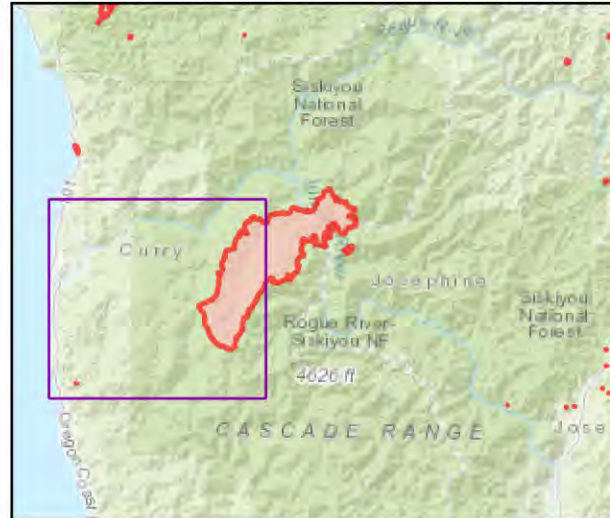


- Repair Status
    - Needs Assessment
    - Repair Needed
    - In Progress
    - Completed - Ready for Inspection
    - Completed - Inspected
    - Other - See Comments
  - Needs Assessment
  - Repair Needed
  - In Progress
  - Completed - Ready for Inspection
  - Completed - Inspected
  - Dip Site
  - Helispot
  - Incident Command Post
  - Drop Point
  - Closure
  - Camp
  - Lookout
  - Hot Spot - Spot Fire
  - Value at Risk
  - Other
- Landmark
  - Gate
  - Bridge
  - Stream Crossing
  - Road Repair
  - Repair Point
  - Landing or Log Deck
  - Dozer Push
  - Culvert
  - Mobile Weather Unit
  - Internet Access
  - Repeater
  - Hazard
  - Water Source
  - Restricted Water Source
  - Pump
  - Completed Dozer Line
  - Completed Fuel Break
  - Completed Hand Line
  - Completed Road as Line
  - Access or Improved Road
  - Temporary Flight Restriction
  - Contained

Event Points  
NO Repair Points IF Repair Status = "No Repair Needed"

Repair Status - Points  
NO Repair Status = "In Use" or "No Repair Needed"

Repair Status Lines  
NO Access Roads or Road as Line  
NO Repair Status = "In Use" or "No Repair Needed"



Scan for digital maps



9/13/2023 2157

NAD 1983 2011 Datum. LatLong Grid

