

AIR OPS

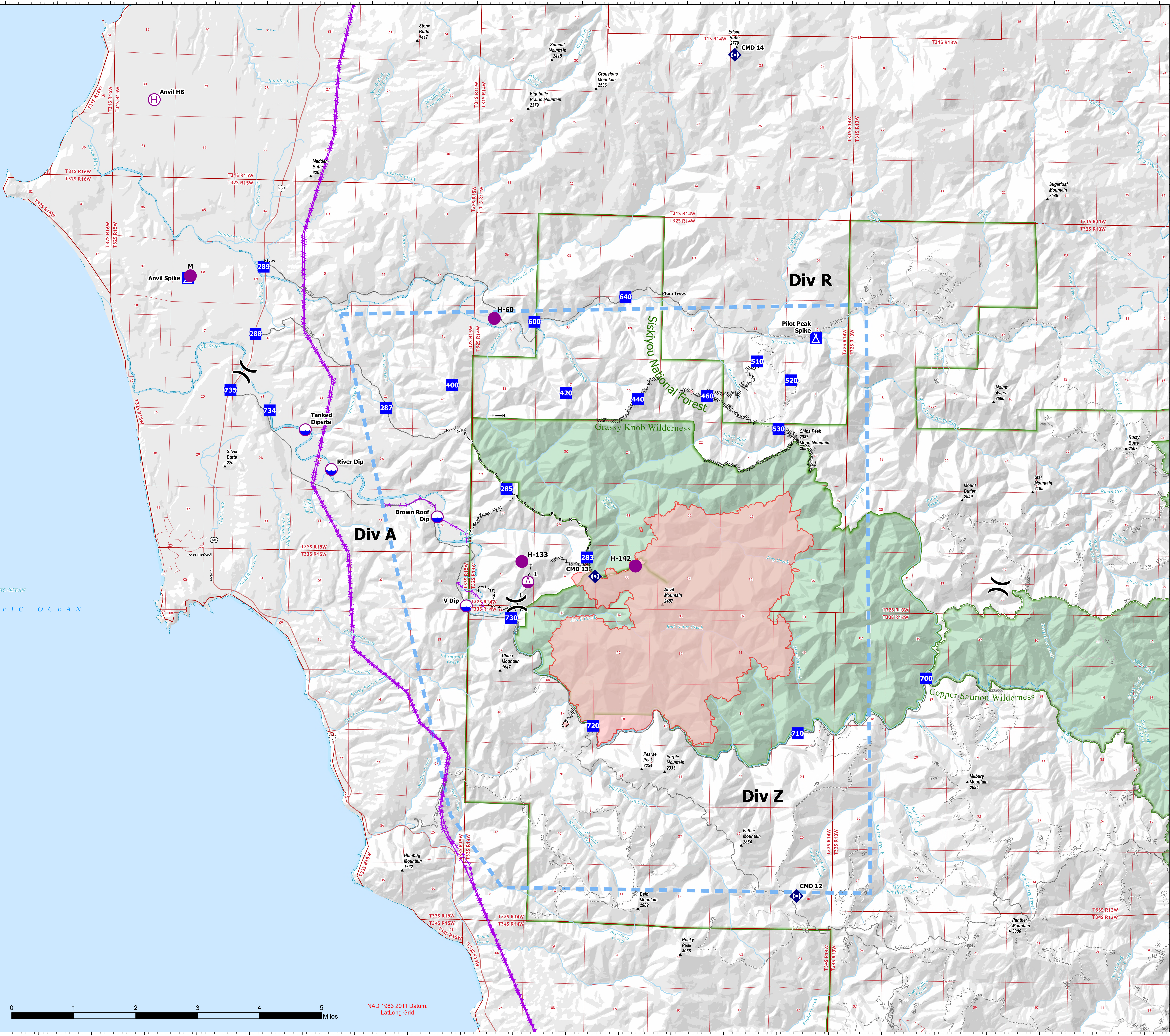
ANVIL
OR-RSF-000413
9/16/2023

6,650 ACRES AT 9/15/2023 1930



- Dip Site
- Helispot
- Helibase
- Sling Site
- Division Site Break
- Drop Point
- Camp
- Repeater
- Completed Dozer Line
- Completed Hand Line
- Completed Road as Line
- Aerial Hazard
- Temporary Flight Restriction
- Transmission Lines
- US Forest
- Service Wilderness

FC Point Type	Label	Latitude WGS84 DDM	Longitude WGS84 DDM
Camp	Anvil Spike	42° 48.967' N	124° 30.432' W
Camp	Pilot Peak Spike	42° 48.271' N	124° 18.453' W
Dip Site	Brown Roof Dip	42° 45.682' N	124° 25.601' W
Dip Site	River Dip	42° 46.320' N	124° 27.631' W
Dip Site	Tanked Dipsite	42° 46.870' N	124° 28.140' W
Dip Site	V Dip	42° 44.440' N	124° 25.021' W
Drop Point	283	42° 45.146' N	124° 22.735' W
Drop Point	285	42° 46.091' N	124° 24.293' W
Drop Point	287	42° 47.198' N	124° 26.607' W
Drop Point	288	42° 48.205' N	124° 29.121' W
Drop Point	289	42° 49.147' N	124° 28.988' W
Drop Point	400	42° 47.534' N	124° 25.360' W
Drop Point	420	42° 47.449' N	124° 23.192' W
Drop Point	440	42° 47.378' N	124° 21.821' W
Drop Point	460	42° 47.439' N	124° 20.503' W
Drop Point	510	42° 47.934' N	124° 19.561' W
Drop Point	520	42° 47.676' N	124° 18.905' W
Drop Point	530	42° 46.992' N	124° 19.135' W
Drop Point	600	42° 48.442' N	124° 23.814' W
Drop Point	640	42° 48.810' N	124° 22.089' W
Drop Point	700	42° 43.526' N	124° 16.253' W
Drop Point	710	42° 42.728' N	124° 18.681' W
Drop Point	720	42° 42.790' N	124° 22.574' W
Drop Point	730	42° 44.282' N	124° 24.162' W
Drop Point	734	42° 47.132' N	124° 28.826' W
Drop Point	735	42° 47.410' N	124° 29.580' W
Helibase	Anvil HB	42° 51.462' N	124° 31.130' W
Helispot	H-133	42° 45.075' N	124° 23.978' W
Helispot	H-142	42° 45.037' N	124° 21.816' W



0 1 2 3 4 5 Miles

NAD 1983 2011 Datum, Lat,Long Grid