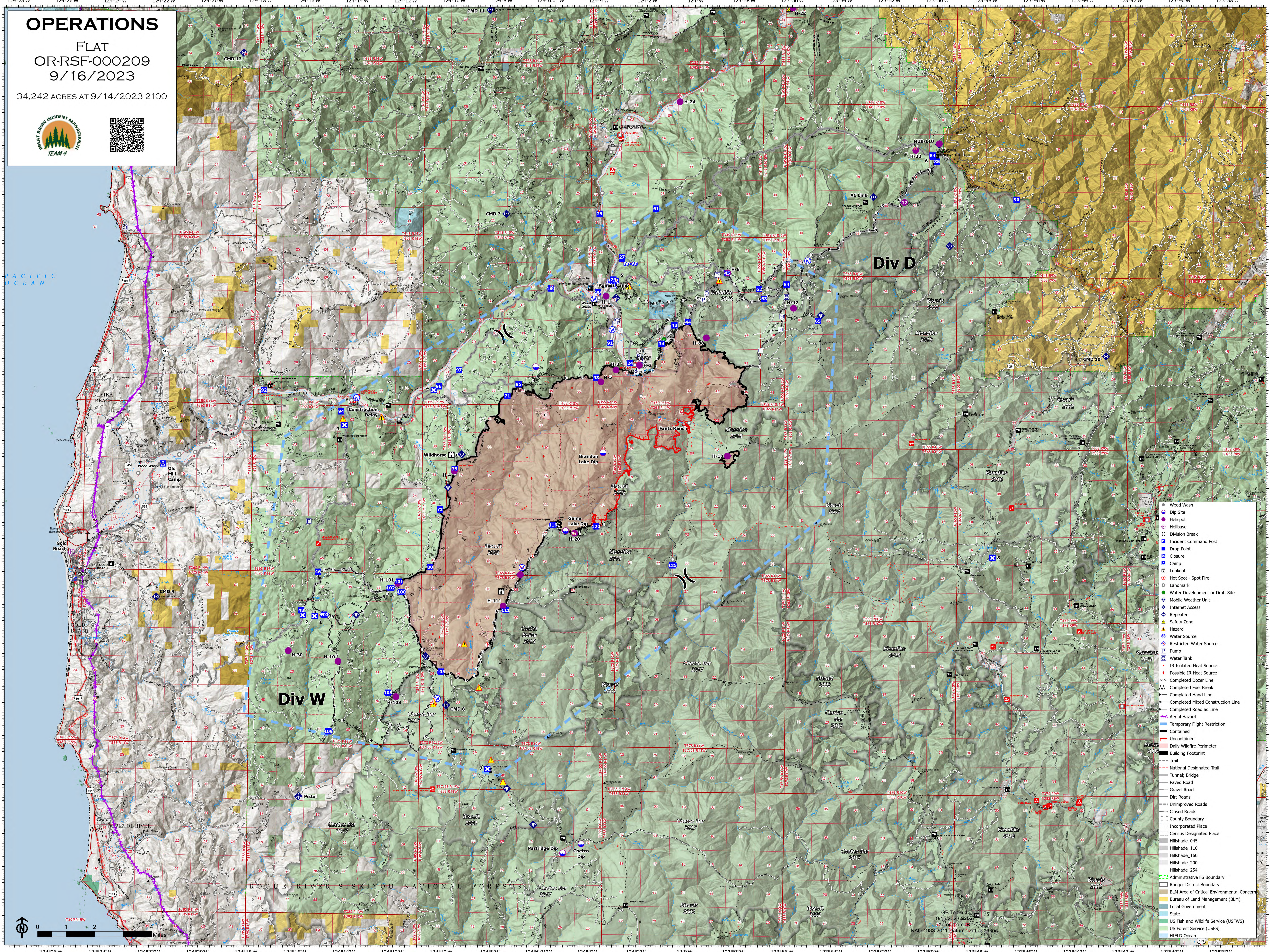


# OPERATIONS

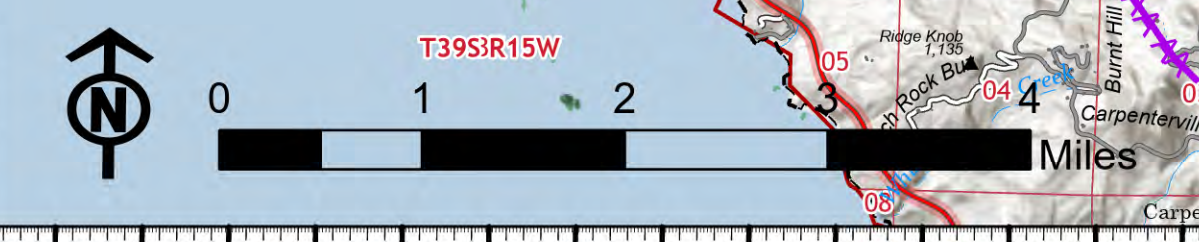
FLAT  
OR-RSF-000209  
9/16/2023

34,242 ACRES AT 9/14/2023 2100



Div D

Div W



- Weed Wash
- Dip Site
- Helibase
- Division Break
- Incident Command Post
- Drop Point
- Closure
- Camp
- Lookout
- Hot Spot - Spot Fire
- Landmark
- Water Development or Draft Site
- Mobile Weather Unit
- Internet Access
- Repeater
- Safety Zone
- Hazard
- Water Source
- Restricted Water Source
- Pump
- Water Tank
- IR Isolated Heat Source
- Possible IR Heat Source
- Completed Dozer Line
- Completed Fuel Break
- Completed Hand Line
- Completed Mixed Construction Line
- Completed Road as Line
- Aerial Hazard
- Temporary Flight Restriction
- Contained
- Uncontained
- Daily Wildfire Perimeter
- Building Footprint
- Trail
- National Designated Trail
- Tunnel; Bridge
- Paved Road
- Gravel Road
- Dirt Roads
- Unimproved Roads
- Closed Roads
- County Boundary
- Incorporated Place
- Census Designated Place
- Hillshade\_045
- Hillshade\_110
- Hillshade\_160
- Hillshade\_200
- Hillshade\_254
- Administrative FS Boundary
- Ranger District Boundary
- BLM Area of Critical Environmental Concern
- Bureau of Land Management (BLM)
- Local Government
- State
- US Fish and Wildlife Service (USFWS)
- US Forest Service (USFS)
- HIFLD Ocean

OB Team 4  
9/16/2023 2100  
Acres from IR  
US Forest Service (USFS)  
NAD 1983 2011 Datum: Lat, Long Grid