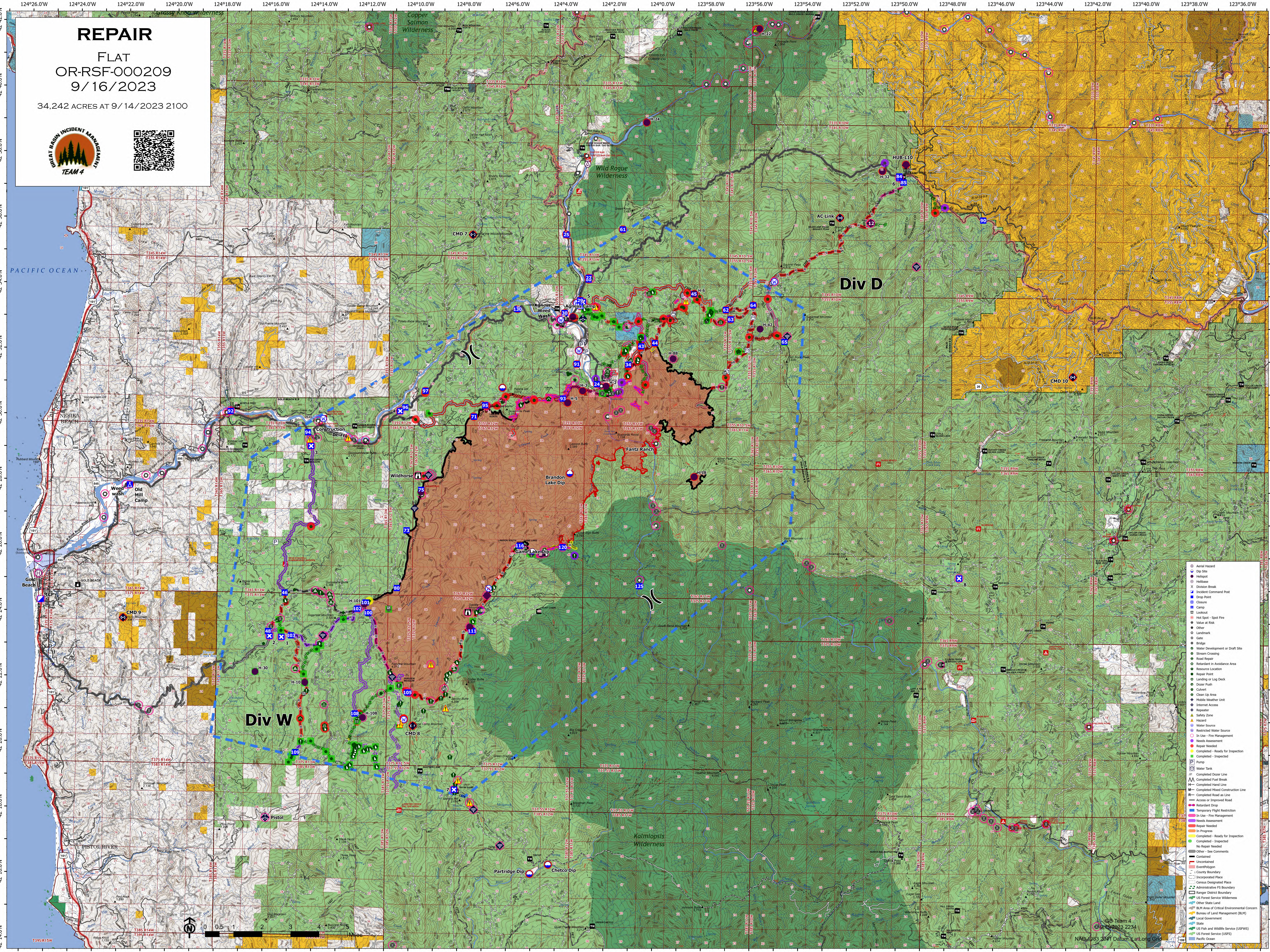


REPAIR

FLAT
OR-RSF-000209
9/16/2023

34,242 ACRES AT 9/14/2023 2100



- Aerial Hazard
- Dip Site
- Helipad
- Helibase
- Division Break
- Incident Command Post
- Drift Point
- Closure
- Camp
- Lookout
- Hot Spot - Spot Fire
- Value at Risk
- Other
- Landmark
- Gate
- Bridge
- Water Development or Draft Site
- Stream Crossing
- Road Repair
- Restricted in Assistance Area
- Resource Location
- Repair Point
- Landing Log Deck
- Duster Push
- Culvert
- Clean Up Area
- Mobile Weather Unit
- Internet Access
- Repetitor
- Safety Zone
- Hazard
- Water Source
- Restricted Water Source
- In Use - Fire Management
- In Use - Fire Management
- Needs Assessment
- Repair Needed
- Completed - Ready for Inspection
- Completed - Inspected
- Pump
- Water Tank
- Completed Door Line
- Completed Fuel Break
- Completed Hand Line
- Completed Mixed Construction Line
- Completed Road as Line
- Access or Improved Road
- Retardant Drop
- Temporary Flight Restriction
- In Use - Fire Management
- Needs Assessment
- Repair Needed
- Completed - Ready for Inspection
- Completed - Inspected
- No Repair Needed
- Other - See Comments
- Contained
- Uncontained
- Incorporated Place
- Census Designated Place
- Administrative PS Boundary
- Ranger District Boundary
- US Forest Service Wilderness
- Other State Land
- BLM Area of Critical Environmental Concern
- Bureau of Land Management (BLM)
- Local Government
- State
- US Fish and Wildlife Service (USFWS)
- US Forest Service (USFS)
- Pacific Ocean



GP Team 4
9/16/2023 2234
NAD 83 2011 Datum Lat/Long GCS