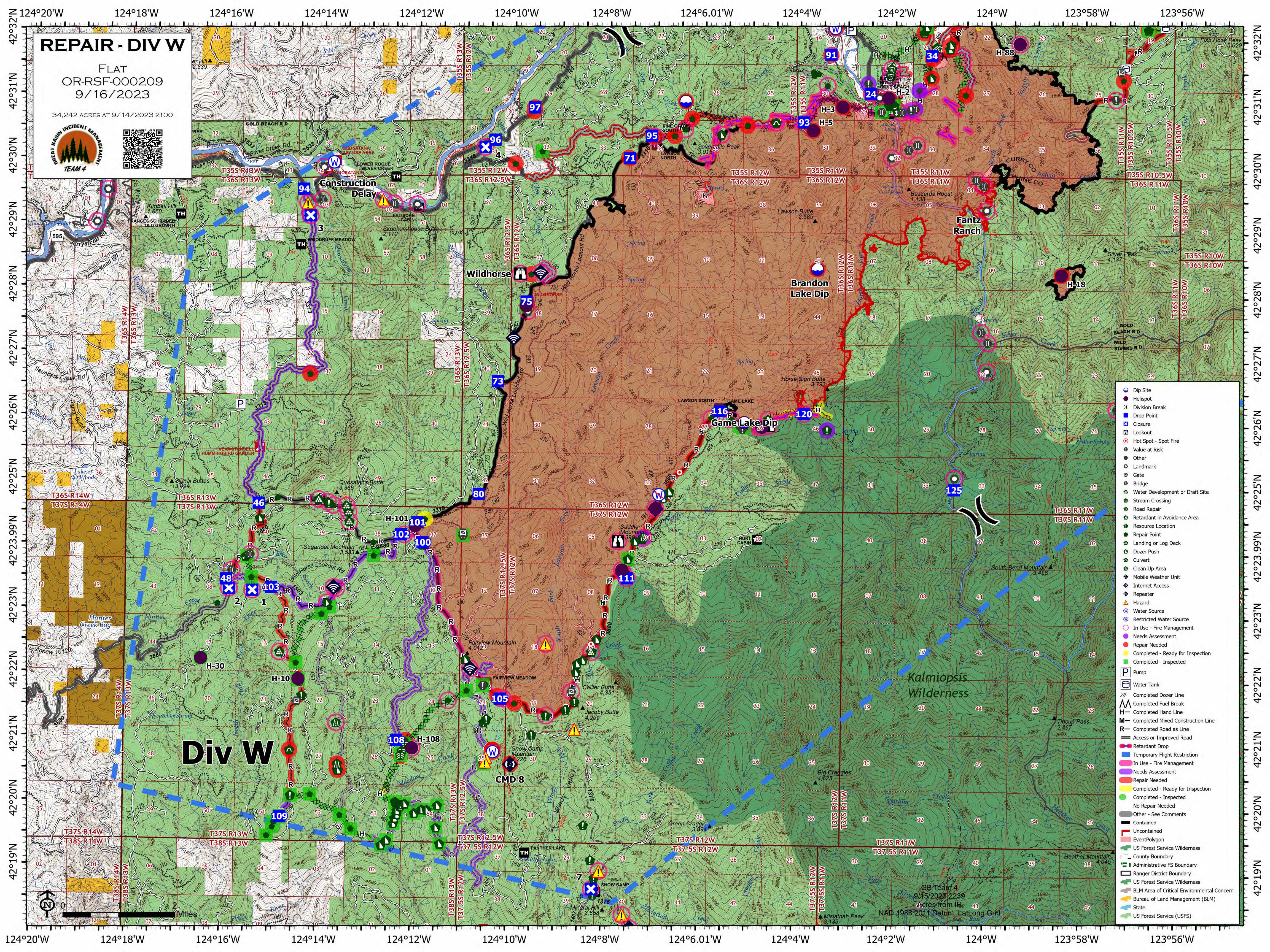


REPAIR - DIV W

FLAT
OR-RSF-000209
9/16/2023

34,242 ACRES AT 9/14/2023 2100



- Dip Site
- Helispot
- Division Break
- Drop Point
- Closure
- Lookout
- Hot Spot - Spot Fire
- Value at Risk
- Other
- Landmark
- Gate
- Bridge
- Water Development or Draft Site
- Stream Crossing
- Road Repair
- Retardant in Avoidance Area
- Resource Location
- Repair Point
- Landing or Log Deck
- Dozer Push
- Culvert
- Clean Up Area
- Mobile Weather Unit
- Internet Access
- Repeater
- Hazard
- Water Source
- Restricted Water Source
- In Use - Fire Management
- Needs Assessment
- Repair Needed
- Completed - Ready for Inspection
- Completed - Inspected
- Pump
- Water Tank
- Completed Dozer Line
- Completed Fuel Break
- Completed Hand Line
- M - Completed Mixed Construction Line
- R - Completed Road as Line
- Access or Improved Road
- Retardant Drop
- Temporary Flight Restriction
- In Use - Fire Management
- Needs Assessment
- Repair Needed
- Completed - Ready for Inspection
- Completed - Inspected
- No Repair Needed
- Other - See Comments
- Contained
- Uncontained
- Event Polygon
- US Forest Service Wilderness
- County Boundary
- Administrative FS Boundary
- Ranger District Boundary
- US Forest Service Wilderness
- BLM Area of Critical Environmental Concern
- Bureau of Land Management (BLM)
- State
- US Forest Service (USFS)

GB Team 4
9/15/2023 2239
Acres from IR 43

NAD 1983 2011 Datum, Lat/Long Grid