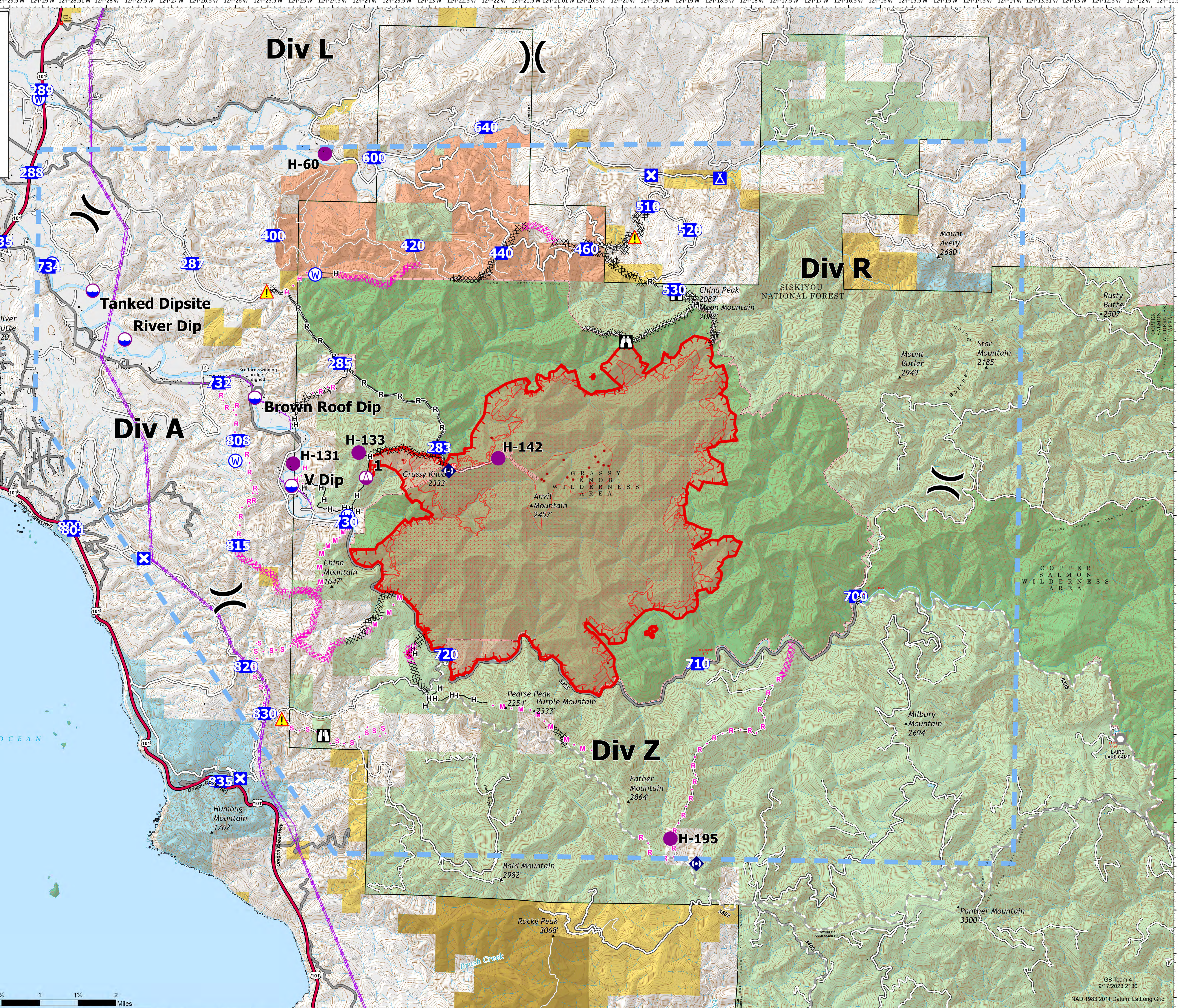


BRIEFING

ANVIL
OR-RSF-000413
9/18/2023

9,023 ACRES AT 9/17/2023 1415



- Building Footprint
- Dip Site
- Helispot
- ▲ Sling Site
- ⌋ Division Break
- Drop Point
- ⓧ Closure
- ⓧ Camp
- ⓧ Staging Area
- ⓧ Lookout
- ⓧ Landmark
- ⓧ Repeater
- ⚠ Hazard
- ⓧ Water Source
- IR Isolated Heat Source
- ⓧ Completed Dozer Line
- ⓧ Completed Hand Line
- ⓧ Completed Road as Line
- ⓧ Planned Dozer Line
- ⓧ Planned Hand Line
- ⓧ Planned Mixed Construction Line
- ⓧ Planned Road as Line
- ⓧ Planned Secondary Line
- ⓧ Aerial Hazard
- ⓧ Temporary Flight Restriction
- ⓧ Uncontained
- ⓧ IR Heat Perimeter
- ⓧ IR Intense Heat
- ⓧ IR Scattered Heat
- ⓧ Administrative FS Boundary
- ⓧ Ranger District Boundary
- ⓧ US Forest Service Wilderness
- ⓧ Coquille Lands
- ⓧ BLM Area of Critical Environmental Concern
- ⓧ Bureau of Land Management (BLM)
- ⓧ State
- ⓧ US Fish and Wildlife Service (USFWS)
- ⓧ US Forest Service (USFS)



GB Team 4
9/17/2023 2130
NAD 1983 2011 Datum, Lat/Long Grid