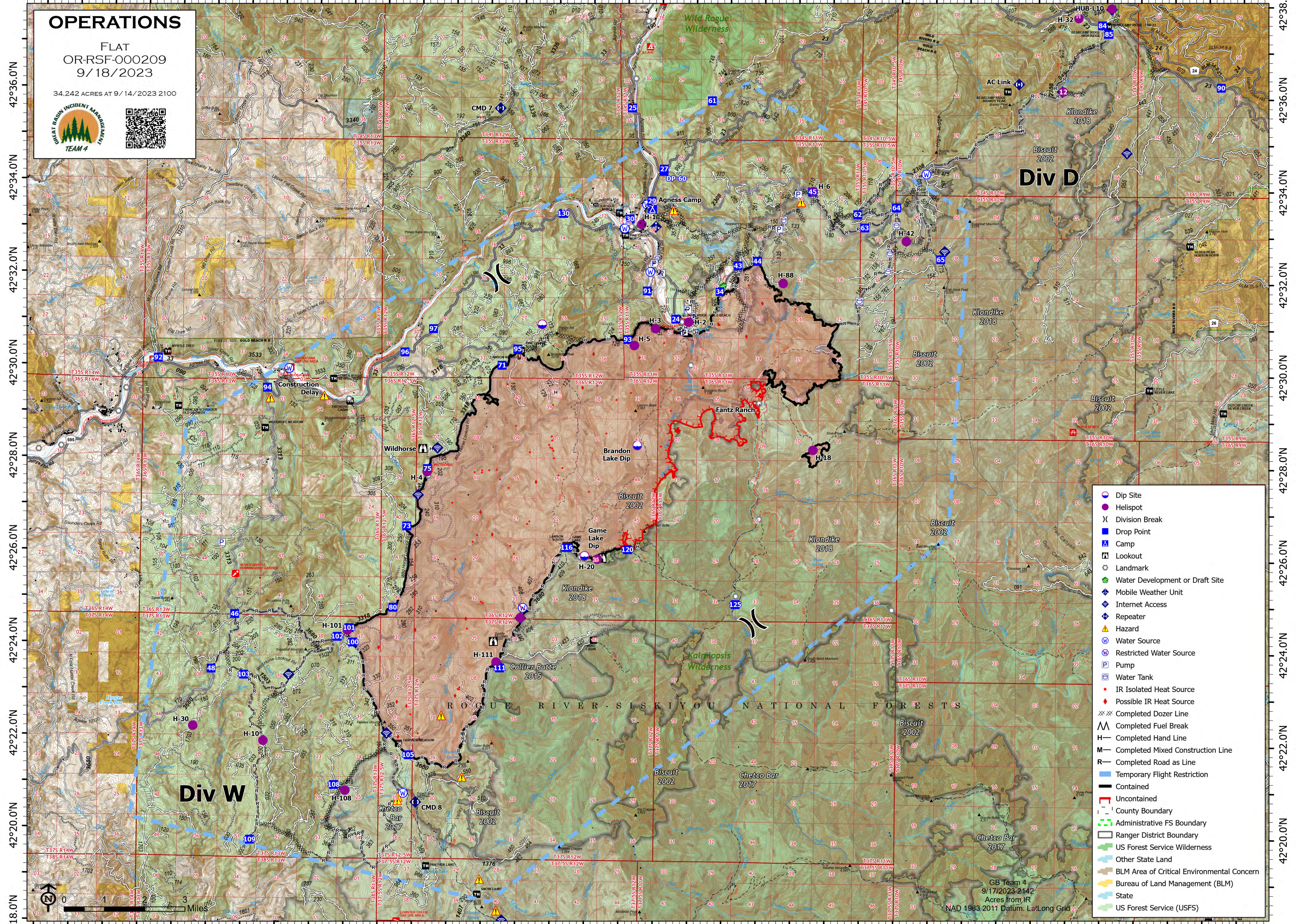


124°20.0'W 124°18.0'W 124°16.0'W 124°14.0'W 124°12.0'W 124°10.0'W 124°8.0'W 124°6.0'W 124°4.0'W 124°2.0'W 124°0.0'W 123°58.0'W 123°56.0'W 123°54.0'W 123°52.0'W 123°50.0'W 123°48.0'W 123°46.0'W

OPERATIONS

FLAT
OR-RSF-000209
9/18/2023

34,242 ACRES AT 9/14/2023 2100



- Dip Site
- Helispot
- Division Break
- Drop Point
- Camp
- Lookout
- Landmark
- Water Development or Draft Site
- Mobile Weather Unit
- Internet Access
- Repeater
- Hazard
- Water Source
- Restricted Water Source
- Pump
- Water Tank
- IR Isolated Heat Source
- Possible IR Heat Source
- Completed Dozer Line
- Completed Fuel Break
- Completed Hand Line
- Completed Mixed Construction Line
- Completed Road as Line
- Temporary Flight Restriction
- Contained
- Uncontained
- County Boundary
- Administrative FS Boundary
- Ranger District Boundary
- US Forest Service Wilderness
- Other State Land
- BLM Area of Critical Environmental Concern
- Bureau of Land Management (BLM)
- State
- US Forest Service (USFS)

GB Team 4
9/17/2023 2142
Acres from IR
NAD 1983 2011 Datum, Lat/Long Grid



124°20.0'W 124°18.0'W 124°16.0'W 124°14.0'W 124°12.0'W 124°10.0'W 124°8.0'W 124°6.0'W 124°4.0'W 124°2.0'W 124°0.0'W 123°58.0'W 123°56.0'W 123°54.0'W 123°52.0'W 123°50.0'W 123°48.0'W 123°46.0'W

42°36.0'N
42°34.0'N
42°32.0'N
42°30.0'N
42°28.0'N
42°26.0'N
42°24.0'N
42°22.0'N
42°20.0'N
42°18.0'N

42°38.0'N
42°36.0'N
42°34.0'N
42°32.0'N
42°30.0'N
42°28.0'N
42°26.0'N
42°24.0'N
42°22.0'N
42°20.0'N