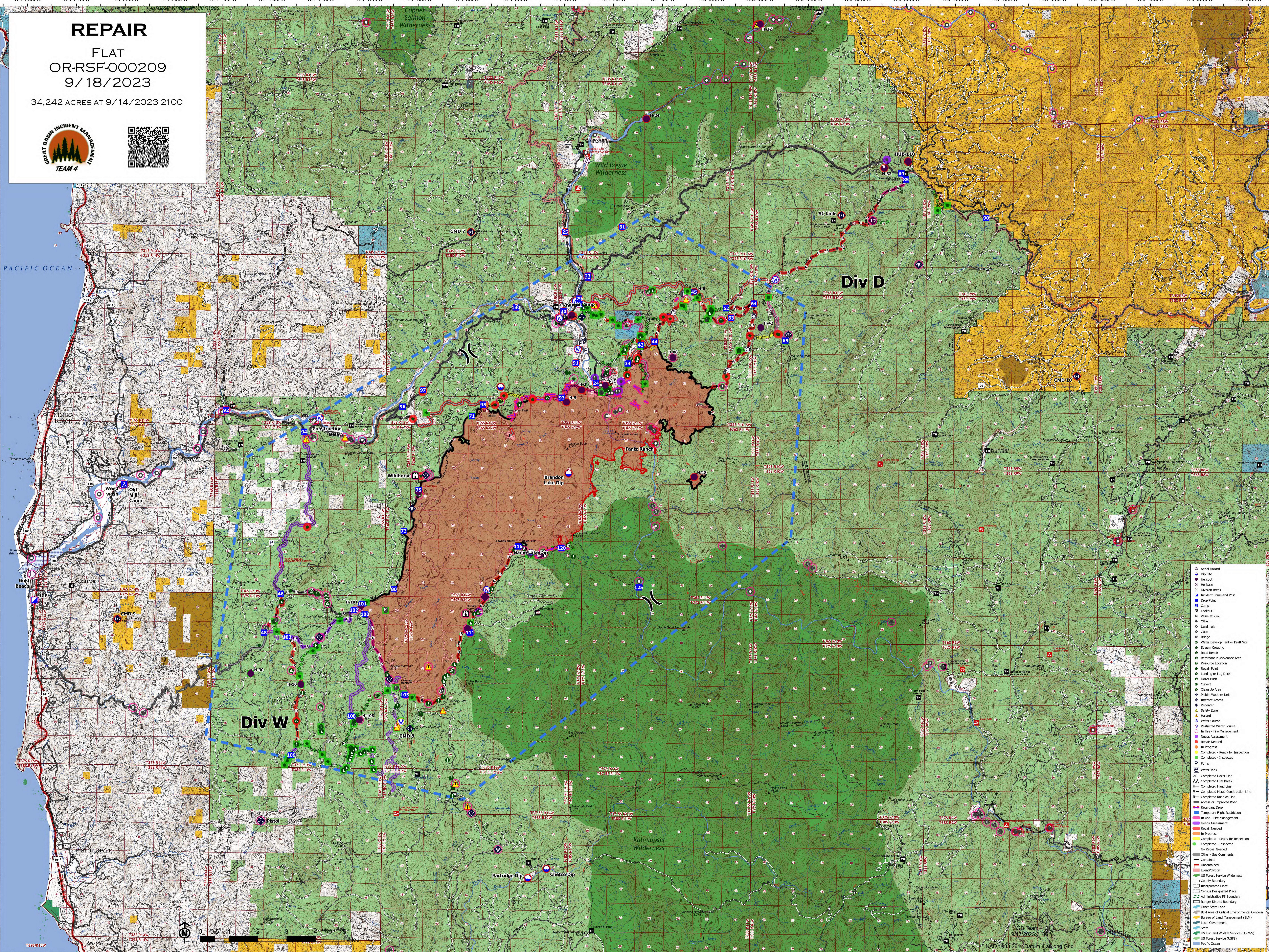


REPAIR

FLAT
OR-RSF-000209
9/18/2023

34,242 ACRES AT 9/14/2023 2100



- Aerial Hazard
- Dip Site
- Helibase
- Incident Command Post
- Camp
- Lookout
- Value at Risk
- Other
- Landmark
- Gate
- Bridge
- Water Development or Draft Site
- Stream Crossing
- Roadblock
- Restricted to Avoidance Area
- Resource Location
- Repair Point
- Landing on Log Deck
- Dozer Push
- Culvert
- Clean Up Area
- Radio Weather Unit
- Internet Access
- Repetitor
- Safety Zone
- Hazard
- Water Source
- Restricted Water Source
- In Use - Fire Management
- Needs Assessment
- Repair Needed
- In Progress
- Completed - Ready for Inspection
- Completed - Inspected
- Other - See Comments
- Contained
- Uncontained
- Event/Phygon
- US Forest Service Wilderness
- County Boundary
- Incorporated Place
- Census Designated Place
- Administrative PS Boundary
- Range District Boundary
- Other State Land
- BLM Area of Critical Environmental Concern
- Bureau of Land Management (BLM)
- Local Government
- State
- US Fish and Wildlife Service (USFWS)
- US Forest Service (USFS)
- Pacific Ocean

NAD 1983 2011 Datum, Laidong Grid

124°26.0'W 124°24.0'W 124°22.0'W 124°20.0'W 124°18.0'W 124°16.0'W 124°14.0'W 124°12.0'W 124°10.0'W 124°8.0'W 124°6.0'W 124°4.0'W 124°2.0'W 124°0.0'W 123°58.0'W 123°56.0'W 123°54.0'W 123°52.0'W 123°50.0'W 123°48.0'W 123°46.0'W 123°44.0'W 123°42.0'W 123°40.0'W 123°38.0'W 123°36.0'W

42°42.0'N 42°40.0'N 42°38.0'N 42°36.0'N 42°34.0'N 42°32.0'N 42°30.0'N 42°28.0'N 42°26.0'N 42°24.0'N 42°22.0'N 42°20.0'N 42°18.0'N 42°16.0'N 42°14.0'N