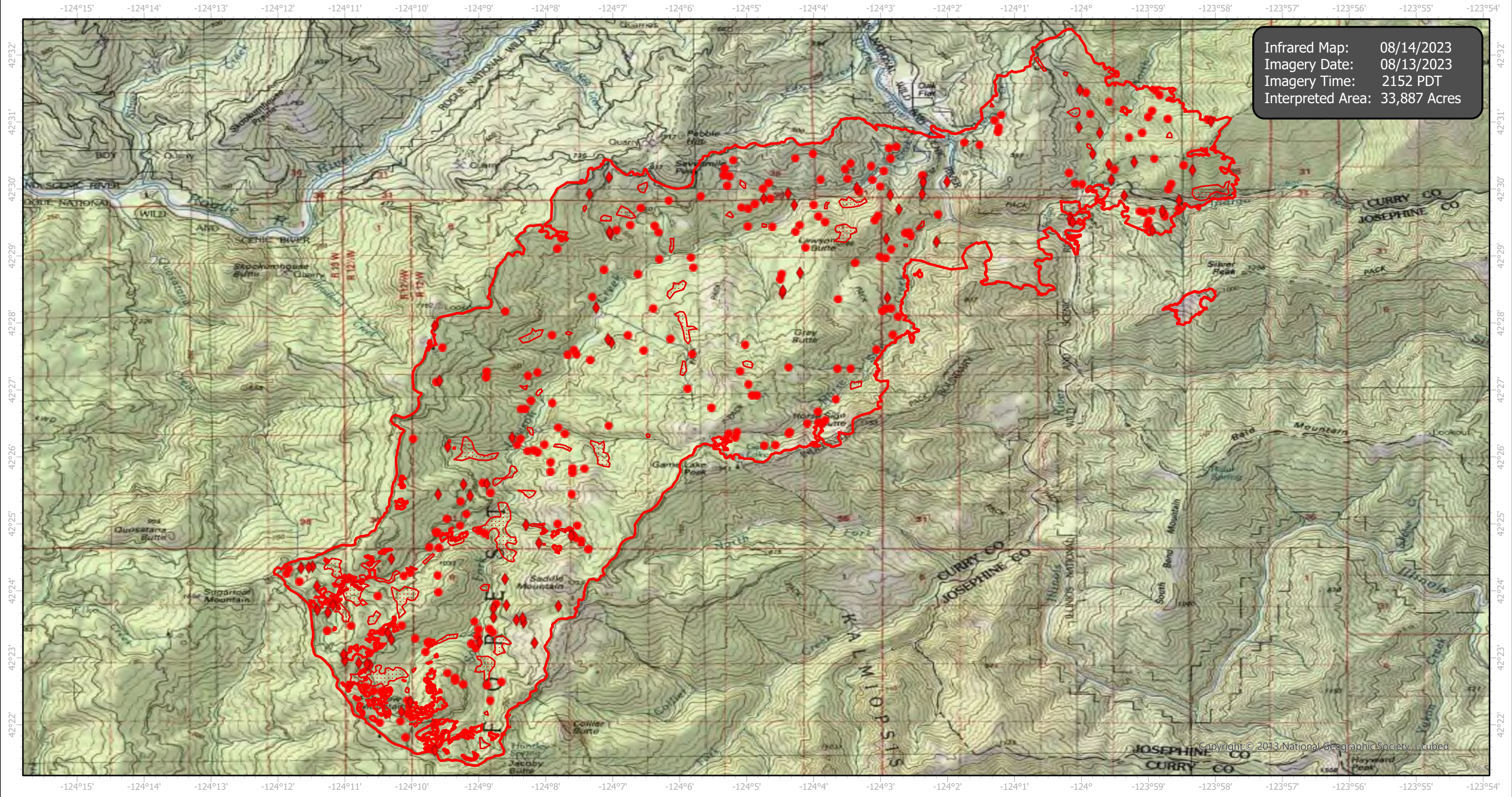


Flat Infrared Map

Incident # (OR-RSF-000209)



Infrared Map: 08/14/2023
Imagery Date: 08/13/2023
Imagery Time: 2152 PDT
Interpreted Area: 33,887 Acres



GCS WGS 1984
Scale: 1:100,000
0 1 2 Miles

- IR Isolated Heat Source
- ◆ Possible IR Heat Source
- ▭ IR Heat Perimeter
- ▨ IR Intense Heat
- ▩ IR Scattered Heat

Copyright © 2013 National Geographic Society, i-cubed

Infrared Interrupter: Daniel LeVrier
email: daniel.levrier@usda.gov