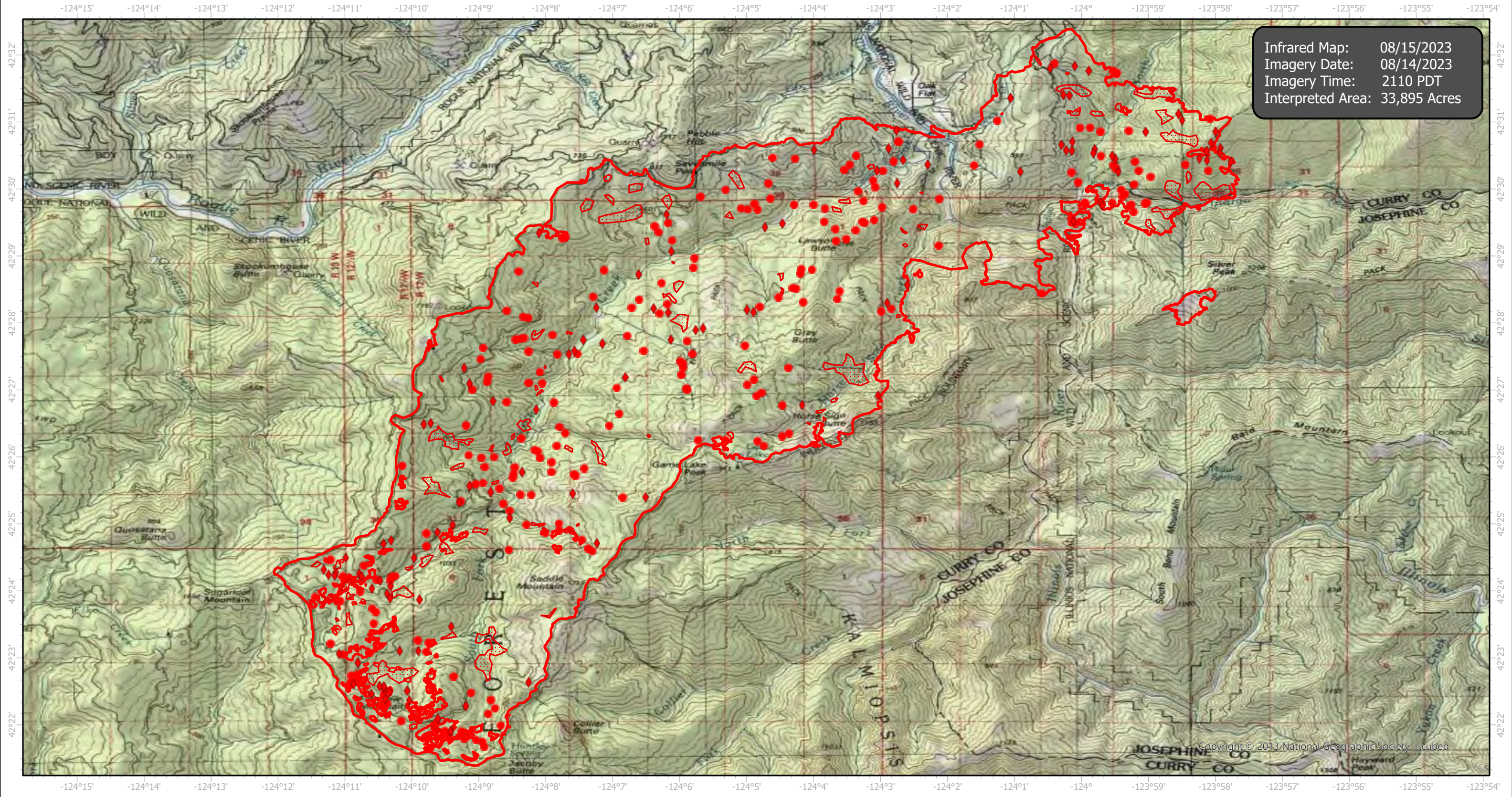
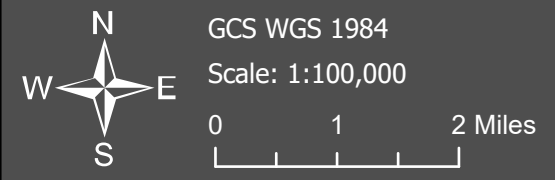


# Flat Infrared Map

Incident # (OR-RSF-000209)



Infrared Map: 08/15/2023  
Imagery Date: 08/14/2023  
Imagery Time: 2110 PDT  
Interpreted Area: 33,895 Acres



- IR Isolated Heat Source
- ◆ Possible IR Heat Source
- ▭ IR Heat Perimeter
- ▨ IR Intense Heat
- ▤ IR Scattered Heat

Copyright © 2013 National Geographic Society, i-cubed

Infrared Interrupter: Daniel LeVrier  
email: [daniel.levrier@usda.gov](mailto:daniel.levrier@usda.gov)