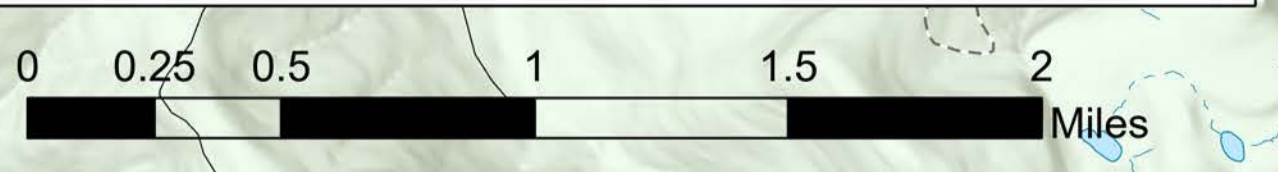


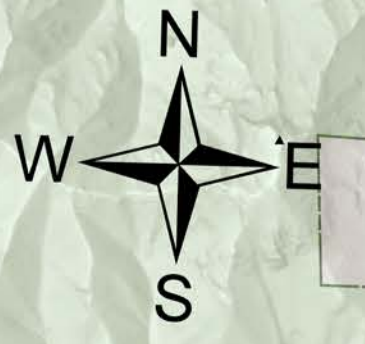
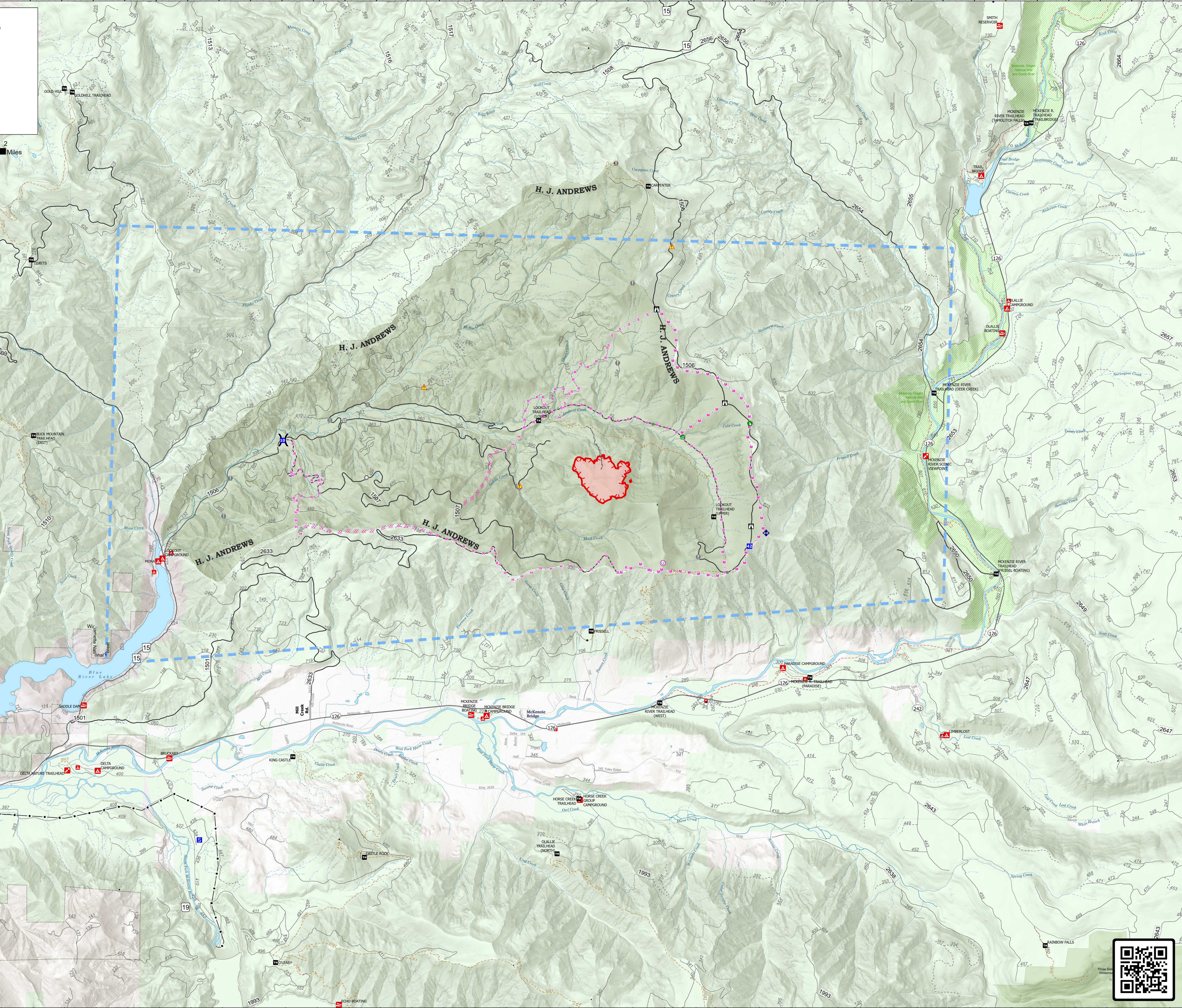
# Operations

Lookout  
OR-WF-230327  
08/14/2023  
24Hour

195 acres at 8/13/2023 0500



- Unimproved Landing Area
- Division Break
- Drop Point
- Staging Area
- Lookout
- Value at Risk
- Other
- Landmark
- Gate
- Bridge
- Water Development or Draft Site
- Dozer Push
- Repeater
- Hazard
- Wildfire Daily Fire Perimeter
- Planned Dozer Line
- Planned Hand Line
- Planned Mixed Construction Line
- Planned Road as Line
- Planned Secondary Line
- Access or Improved Road
- Other
- Temporary Flight Restriction
- Uncontained
- State Highway and Route
- Forest Service Road
- 3 - SUITABLE FOR PASSENGER CARS
- 2 - HIGH CLEARANCE VEHICLES
- 1 - BASIC CUSTODIAL CARE (CLOSED)
- Other road
- City
- Gap; Summit
- Pillar; Crater
- Campground
- Group Campground
- Trailhead
- Boating Site
- Interpretive Site
- Post Office
- Fire Station / EMS Station
- Forest Service
- National Designated Trail
- Transmission Lines
- Stream Intermittent
- Stream Perennial
- Stream
- McKenzie River
- NHD Waterbody
- Wild And Scenic River
- Recreational
- EXPERIMENTAL FOREST
- Wilderness\_r06
- Ranger District
- National Forest
- U.S. Forest Service
- Other Federal Land
- Other Land, Including Private
- Campground
- Facility



NW Team 6  
8/13/2023 2301  
Acres from IR and GPS  
North American 1983 Datum, Lat/Long Grid

