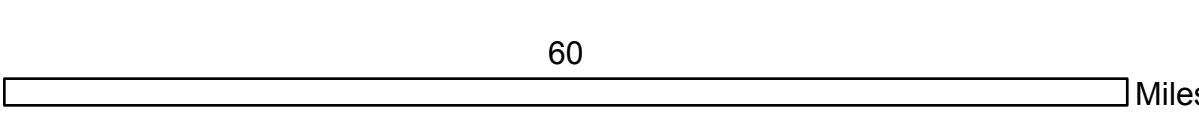
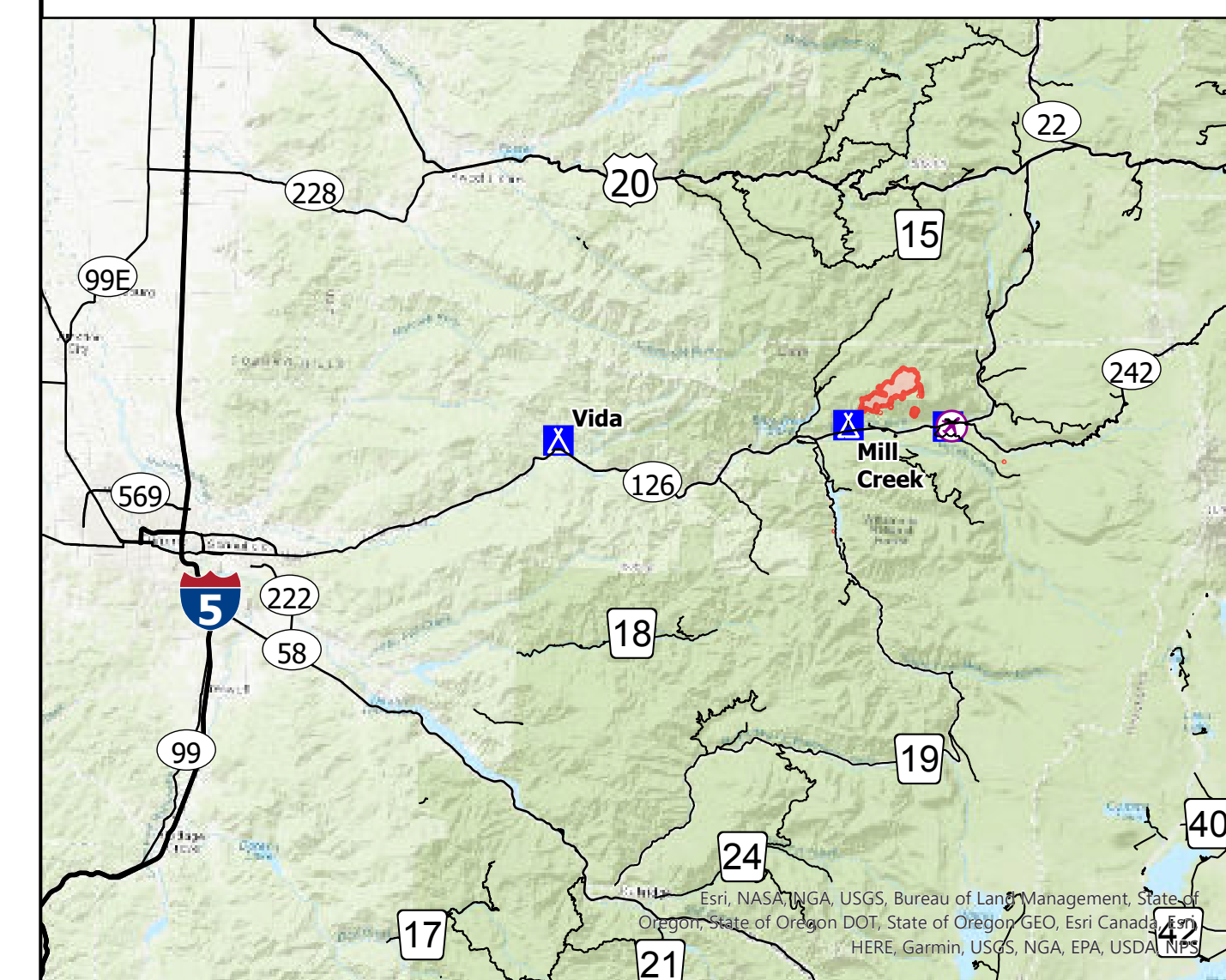
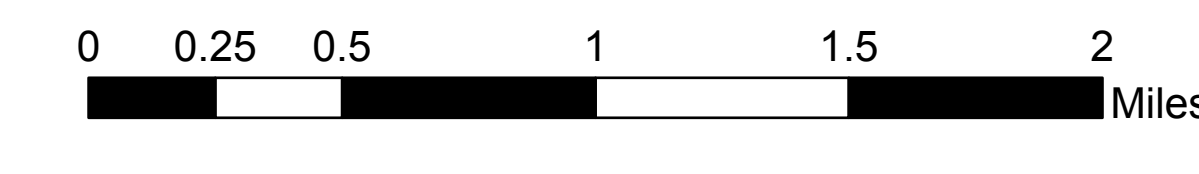


Medical Evacuation

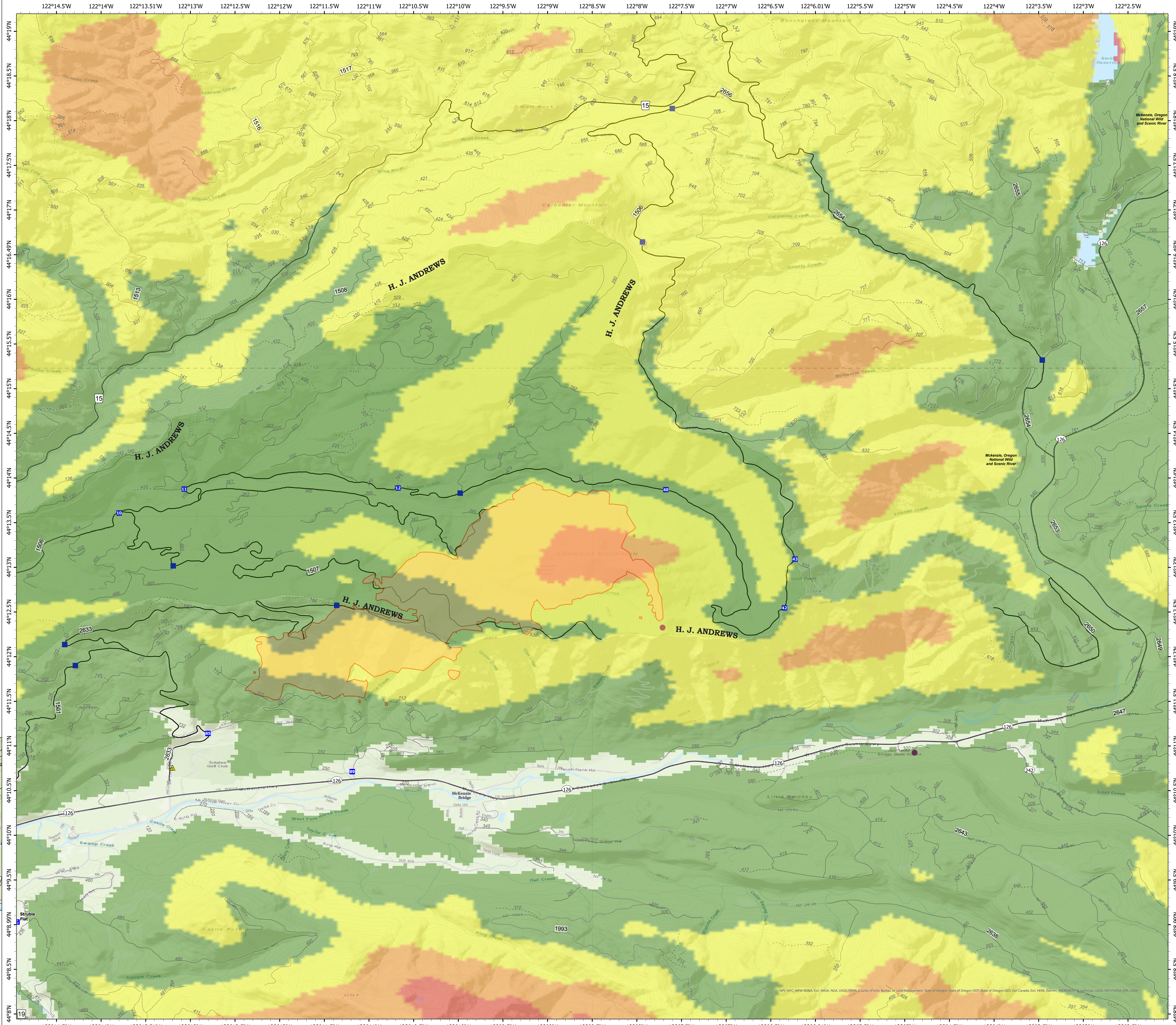
Lookout
OR-WIF-230327
08/15/2023
24 Hour
2,720 acres at 8/14/2023 2009



- Wildfire Daily Fire Perimeter
- Estimated Ground Evacuation Time (Fine)
 - 1 to 2 Hours
 - 2 to 4 Hours
 - 4 to 6 Hours
 - More than 6 Hours
- Helispot
- Unimproved Landing Area
- Drop Point
- Staging Area
- Safety Zone
- Ranger District
- H. J. Andrews Experimental Forest
- State Highway and Route
 - 3 - SUITABLE FOR PASSENGER CARS
 - 2 - HIGH CLEARANCE VEHICLES
 - 1 - BASIC CUSTODIAL CARE (CLOSED)
- other road



8/14/2023 2333
WGS 1984 Datum, LatLong Grid



NPS, NRC, WIM, RDBA, Inc, NASA, NGA, USGS, FEMA, County of Linn, Bureau of Land Management, State of Oregon, State of Oregon GEOI, State of Oregon GEOI, Inc Canada, Esri, HERE, Garmin, IGN, Intermap, iSD, GeoEye, USDA, NITDA, USA, USGS