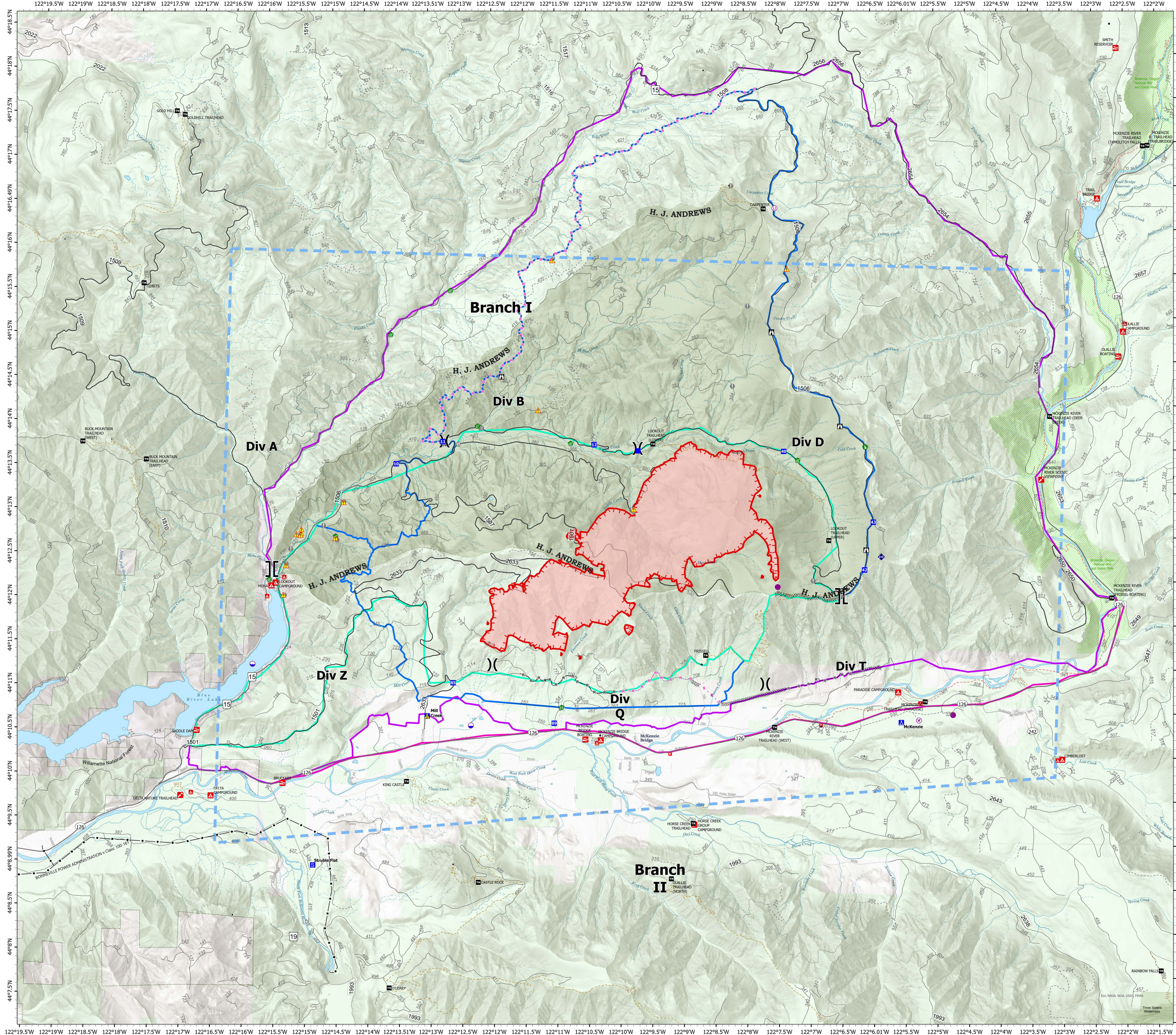


Strategic Operations

Lookout
OR-WIF-230327
08/15/2023
24Hour

2,720 acres at 8/14/2023
2009

- Airstrip or Airport
- Dip Site
- Helispot
- Unimproved Landing Area
- Division Break
- Branch Break
- Drop Point
- Camp
- Staging Area
- Lookout
- Value at Risk
- Other
- Gate
- Bridge
- Water Development or Draft Site
- Stream Crossing
- Road Repair
- Repair Point
- Dozer Push
- Repeater
- Safety Zone
- Hazard
- Wildfire Daily Fire Perimeter
- Completed Dozer Line
- Completed Road as Line
- Planned Road as Line
- Planned Secondary Line
- Temporary Flight Restriction
- Uncontained
- Primary
- Alternate
- Contingency
- Emergency
- State Highway and Route
- Forest Service Road
- 3 - SUITABLE FOR PASSENGER CARS
- 2 - HIGH CLEARANCE VEHICLES
- 1 - BASIC CUSTODIAL CARE (CLOSED)
- other road
- City
- Gap; Summit
- Pillar; Crater
- Campground
- Group Campground
- Trailhead
- Boating Site
- Interpretive Site
- Fire Station / EMS Station
- Forest Service
- Trail
- National Designated Trail
- Transmission Lines
- Stream Intermittent
- Stream Perennial
- Stream
- McKenzie River
- NHD Waterbody
- Wild And Scenic River
- Recreational
- EXPERIMENTAL FOREST
- Wilderness_06
- Ranger District
- National Forest
- U.S. Forest Service
- Other Federal Land
- Other Land, Including Private



0 0.25 0.5 1 1.5 Miles

NW Team 6
8/14/2023 2329
Acres from IR and GPS
North American 1983 Datum, Lat/Long
Grid