

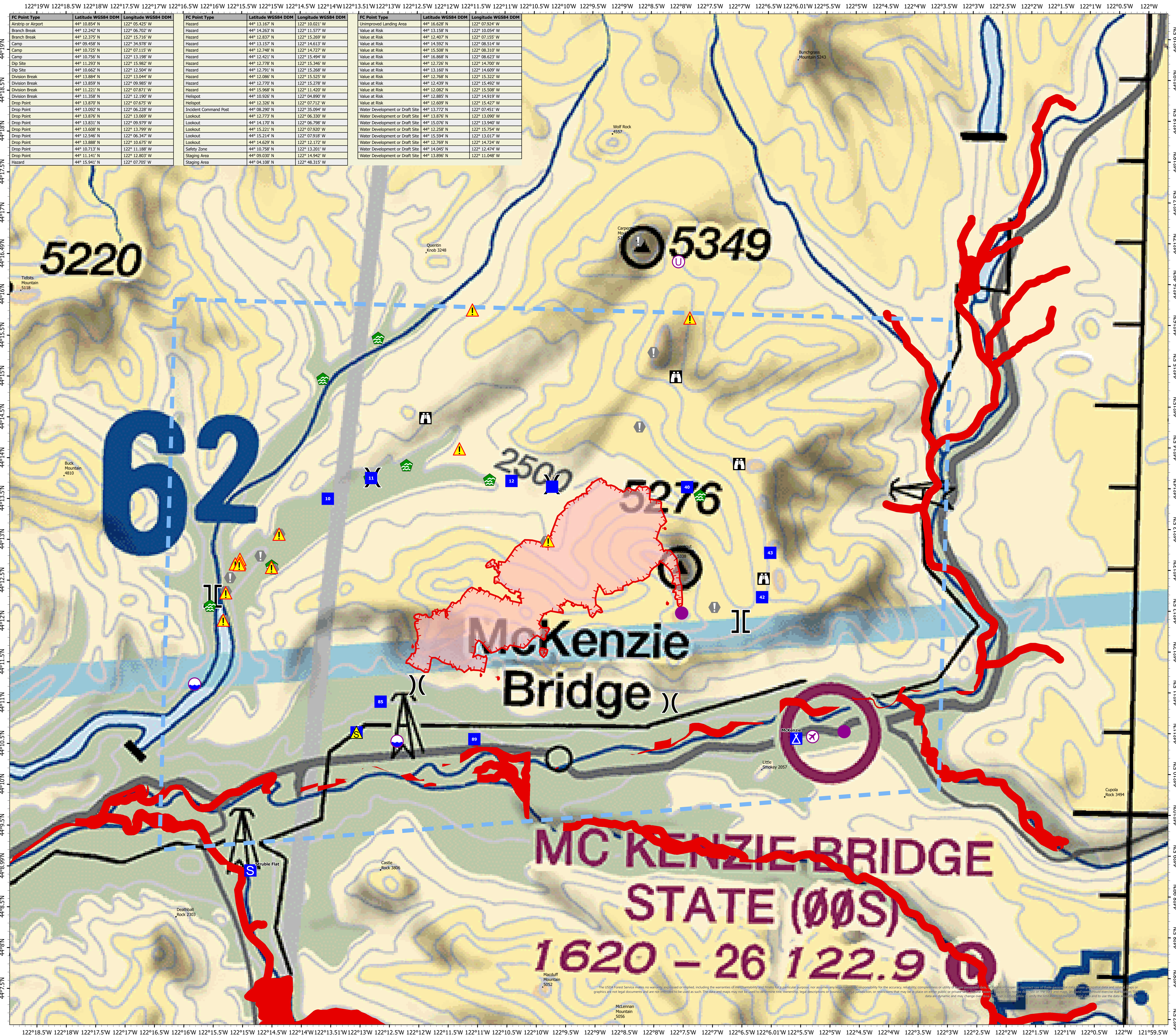
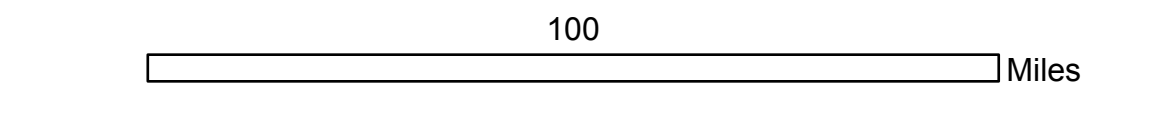
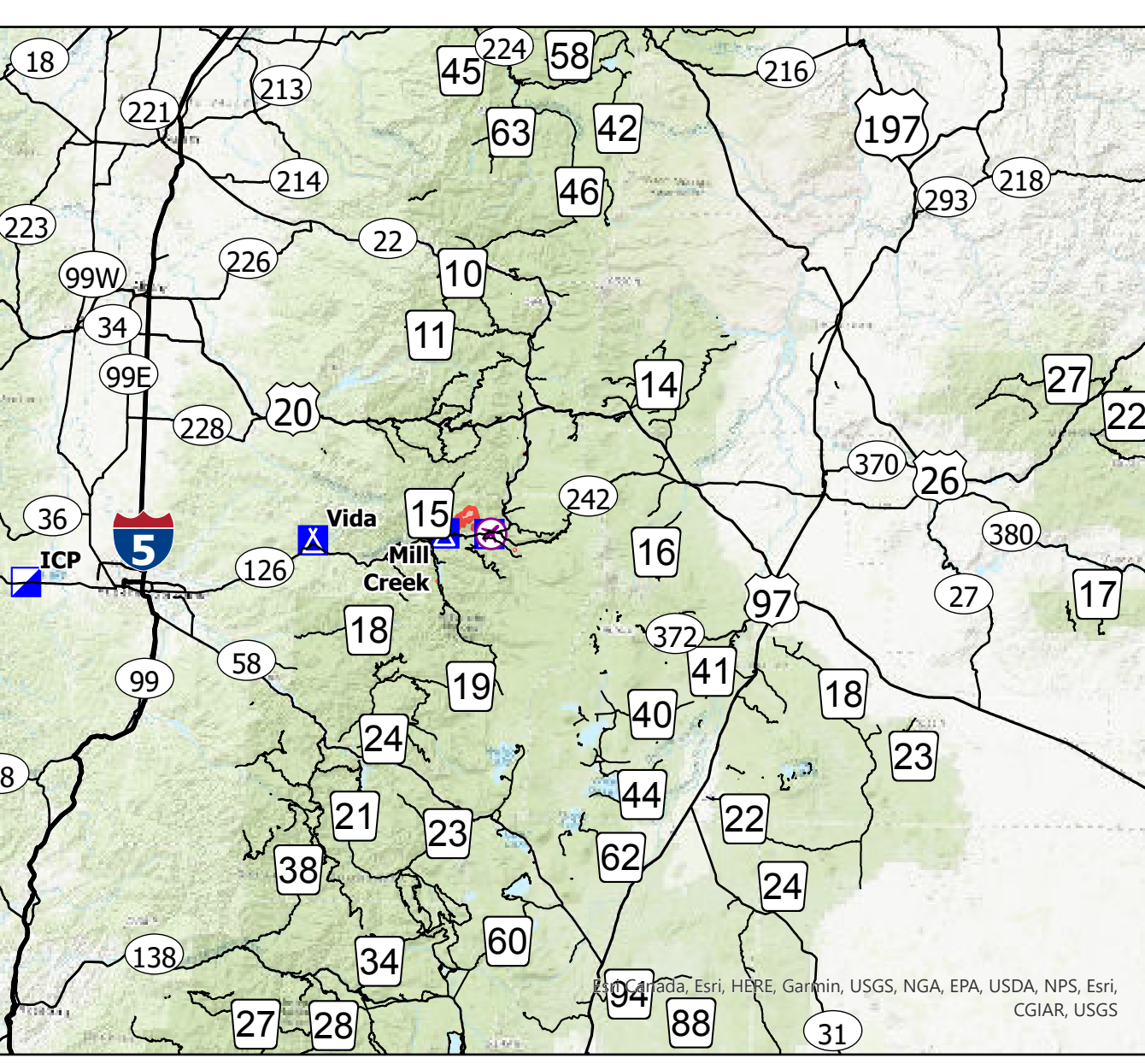
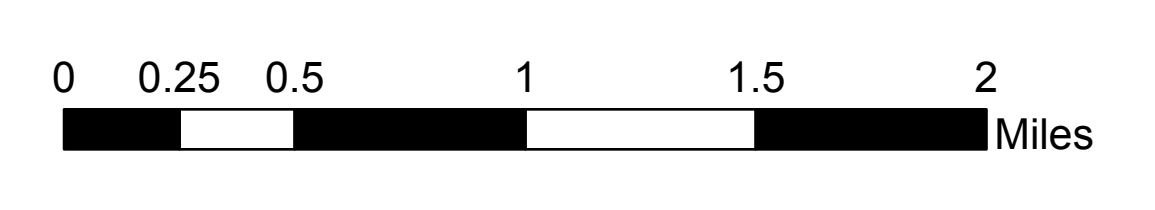
Air Operations

Lookout
OR-WIF-230327
08/15/2023
24 Hour

2,720 acres at 8/14/2023 2009



- Airstrip or Airport
- Dip Site
- Helispot
- Unimproved Landing Area
- Division Break
- Branch Break
- Drop Point
- Camp
- Staging Area
- Lookout
- Value at Risk
- Water Development or Draft Site
- Safety Zone
- Hazard
- Temporary Flight Restriction
- Uncontained
- Wildfire Daily Fire Perimeter
- Aerial Fire Retardant Avoidance Areas: Terrestrial



FC Point Type	Latitude WGS84 DDM	Longitude WGS84 DDM	FC Point Type	Latitude WGS84 DDM	Longitude WGS84 DDM	FC Point Type	Latitude WGS84 DDM	Longitude WGS84 DDM
Airstrip or Airport	44° 10.854' N	122° 05.422' W	Hazard	44° 13.167' N	122° 10.021' W	Unimproved Landing Area	44° 16.628' N	122° 07.924' W
Branch Break	44° 12.242' N	122° 06.702' W	Hazard	44° 14.263' N	122° 11.577' W	Value at Risk	44° 13.158' N	122° 10.054' W
Branch Break	44° 12.375' N	122° 15.716' W	Hazard	44° 12.837' N	122° 15.269' W	Value at Risk	44° 12.407' N	122° 07.155' W
Camp	44° 09.458' N	122° 34.978' W	Hazard	44° 13.157' N	122° 14.613' W	Value at Risk	44° 14.592' N	122° 08.514' W
Camp	44° 10.725' N	122° 07.115' W	Hazard	44° 12.748' N	122° 14.727' W	Value at Risk	44° 15.508' N	122° 08.310' W
Camp	44° 10.736' N	122° 13.198' W	Hazard	44° 12.421' N	122° 15.494' W	Value at Risk	44° 16.868' N	122° 08.623' W
Cap Site	44° 11.293' N	122° 15.982' W	Hazard	44° 12.778' N	122° 15.346' W	Value at Risk	44° 12.782' N	122° 14.700' W
Dip Site	44° 10.662' N	122° 15.504' W	Hazard	44° 12.791' N	122° 15.268' W	Value at Risk	44° 13.160' N	122° 14.609' W
Division Break	44° 13.884' N	122° 13.044' W	Hazard	44° 12.086' N	122° 15.525' W	Value at Risk	44° 12.768' N	122° 15.322' W
Division Break	44° 13.859' N	122° 09.985' W	Hazard	44° 12.770' N	122° 15.278' W	Value at Risk	44° 12.439' N	122° 15.492' W
Division Break	44° 11.221' N	122° 07.871' W	Hazard	44° 15.968' N	122° 11.420' W	Value at Risk	44° 12.082' N	122° 15.508' W
Division Break	44° 11.358' N	122° 12.190' W	Helispot	44° 10.926' N	122° 04.890' W	Value at Risk	44° 12.885' N	122° 14.919' W
Drop Point	44° 13.070' N	122° 06.675' W	Helispot	44° 12.326' N	122° 07.712' W	Value at Risk	44° 12.699' N	122° 15.427' W
Drop Point	44° 13.092' N	122° 06.228' W	Incident Command Post	44° 08.290' N	122° 35.094' W	Water Development or Draft Site	44° 13.772' N	122° 07.451' W
Drop Point	44° 13.876' N	122° 13.069' W	Lookout	44° 12.773' N	122° 06.330' W	Water Development or Draft Site	44° 13.876' N	122° 13.090' W
Drop Point	44° 13.831' N	122° 09.979' W	Lookout	44° 14.170' N	122° 06.798' W	Water Development or Draft Site	44° 16.628' N	122° 07.924' W
Drop Point	44° 13.608' N	122° 13.799' W	Lookout	44° 15.221' N	122° 07.920' W	Water Development or Draft Site	44° 12.258' N	122° 15.754' W
Drop Point	44° 12.546' N	122° 06.347' W	Lookout	44° 15.214' N	122° 07.918' W	Water Development or Draft Site	44° 15.594' N	122° 13.017' W
Drop Point	44° 13.888' N	122° 10.675' W	Lookout	44° 14.629' N	122° 13.172' W	Water Development or Draft Site	44° 12.769' N	122° 14.724' W
Drop Point	44° 10.713' N	122° 11.188' W	Safety Zone	44° 10.758' N	122° 13.201' W	Water Development or Draft Site	44° 14.045' N	122° 12.474' W
Drop Point	44° 11.141' N	122° 12.803' W	Staging Area	44° 09.030' N	122° 14.942' W	Water Development or Draft Site	44° 13.890' N	122° 11.048' W
Hazard	44° 15.941' N	122° 07.705' W	Staging Area	44° 04.108' N	122° 48.315' W			