

Transportation

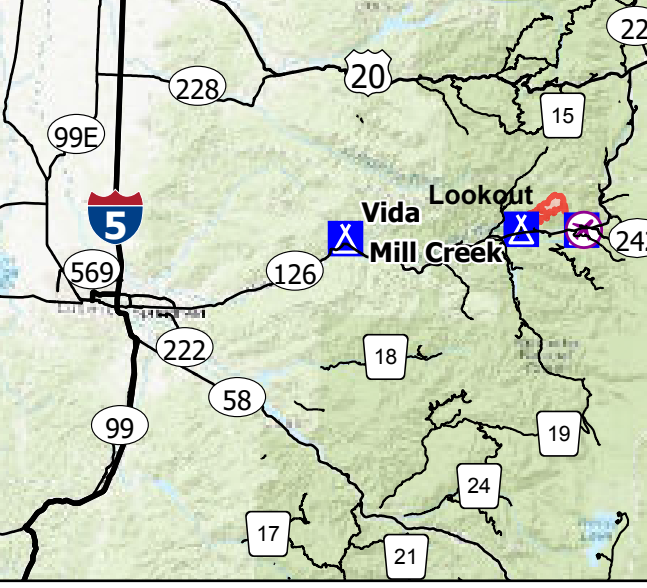
**Lookout
OR-WIF-230327
08/15/2023
24 Hour**

2,720 acres at
8/14/2023 2009



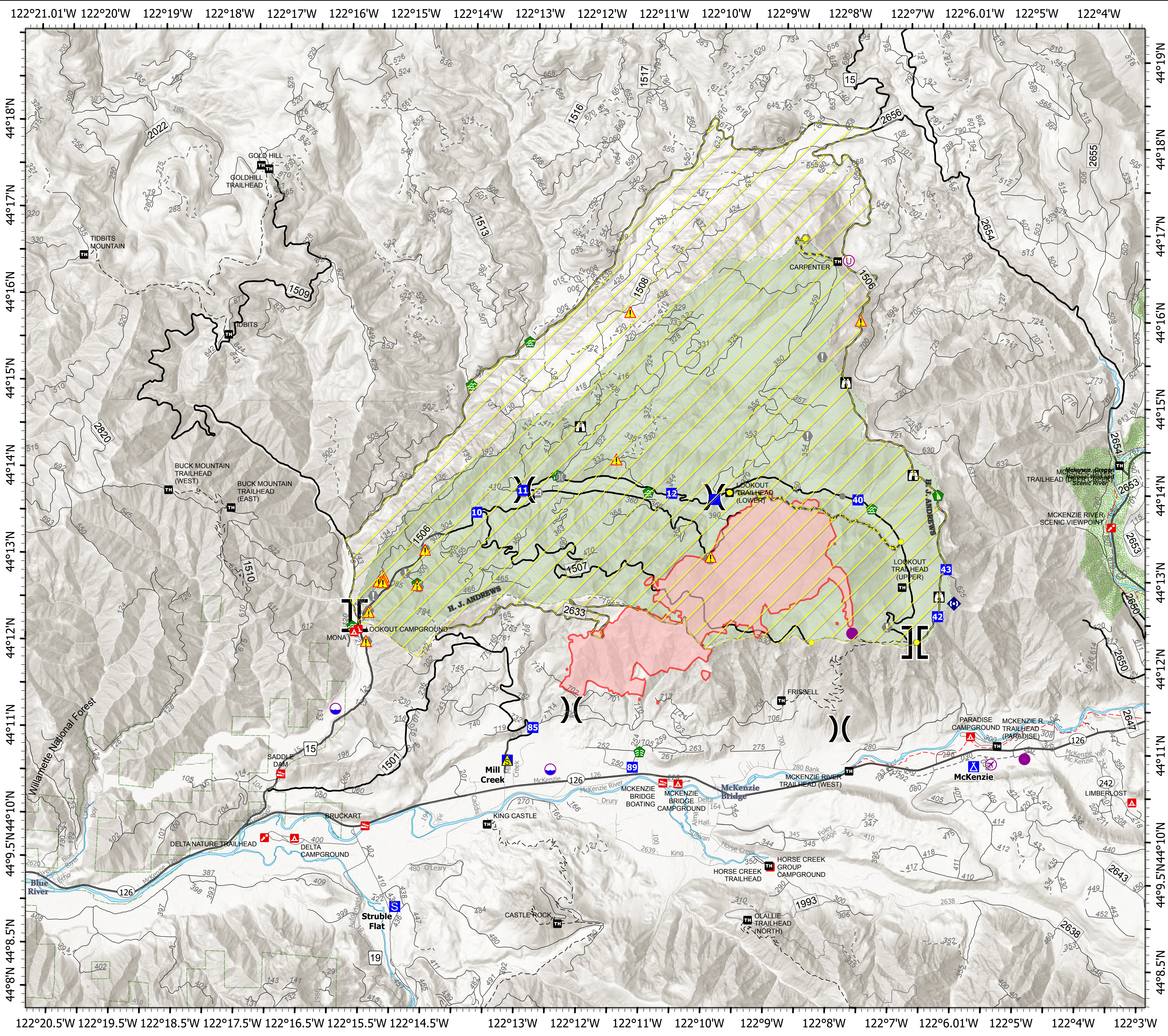
- Wildfire Daily Fire Perimeter
- Site Closure
- Road/Trail Closure
- Closure Areas
- Airstrip or Airport
- Dip Site
- Helispot
- Unimproved Landing Area
- Division Break
- Branch Break
- Drop Point
- Camp
- Staging Area
- Lookout
- Value at Risk
- Other
- Gate
- Bridge
- Water Development or Draft Site
- Stream Crossing
- Road Repair
- Repair Point
- Dozer Push
- Repeater
- Safety Zone
- Hazard
- State Highway and Route
- 3 - Suitable for Passenger Cars
- 2 - High Clearance Vehicles
- 1 - Basic Custodial Care (Closed)
- other road
- City
- Wild And Scenic River
- Recreational

0 0.5 1 2 Miles



40
NW Team 6
8/14/2023 2334

North American 1983 Datum. LatLong Grid



122°20.5'W 122°19.5'W 122°18.5'W 122°17.5'W 122°16.5'W 122°15.5'W 122°14.5'W 122°13'W 122°12'W 122°11'W 122°10'W 122°9'W 122°8'W 122°7'W 122°6.01'W 122°5'W 122°4'W 122°3'W