

Division Tile

Lookout
OR-WIF-230327
08/16/2023
24 Hours

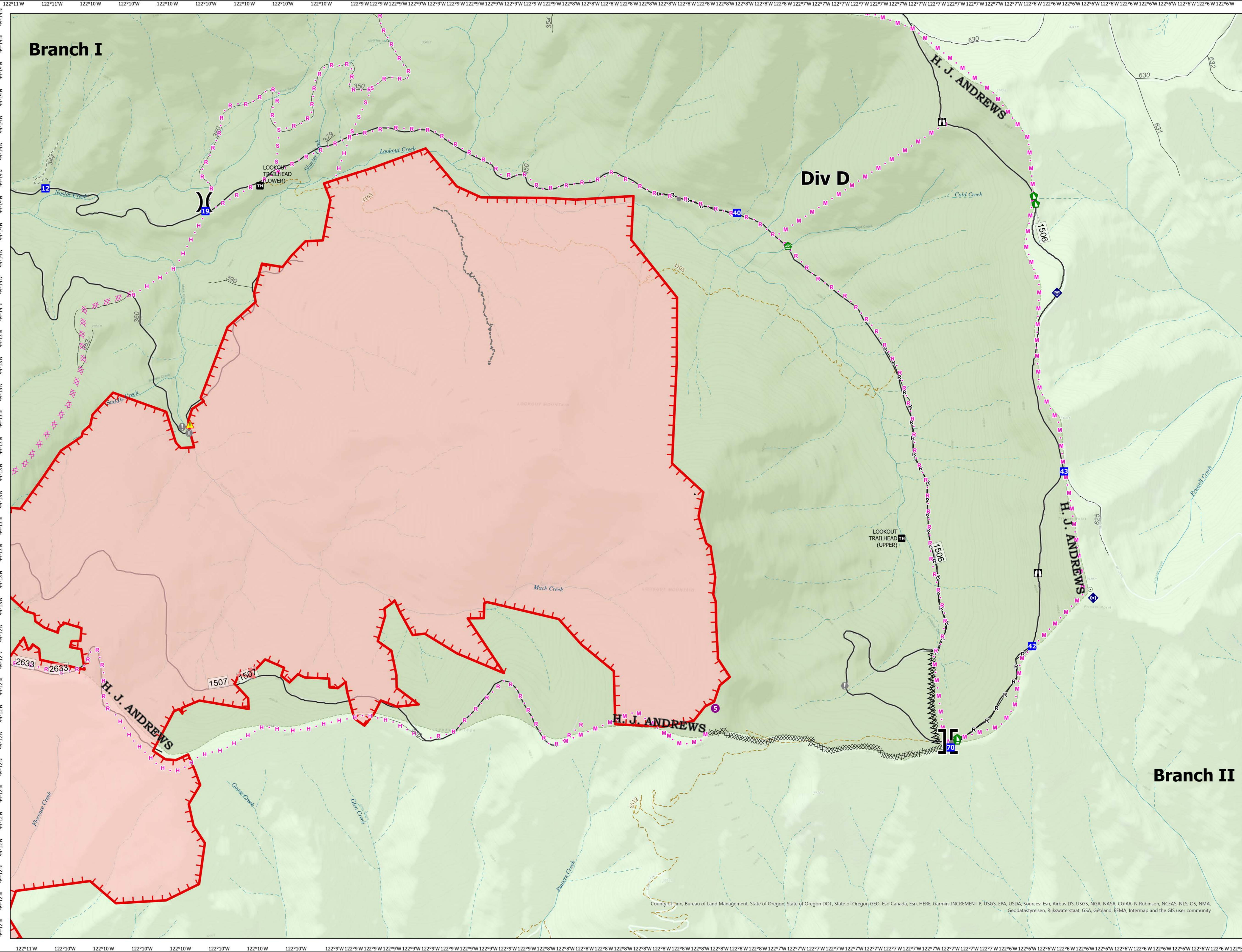
3710 acres
at 8/15/2023 1715

Div D

- Helispot
- ⌋ Division Break
- ⌈ Branch Break
- Drop Point
- 🏠 Lookout
- ⚠ Value at Risk
- Other
- 🌉 Bridge
- 🏠 Water Development or Draft Site
- 🚧 Dozer Push
- 📶 Internet Access
- 📶 Repeater
- ⚠ Hazard
- ⌘ Completed Dozer Line
- ⌘ Completed Fuel Break
- Completed Road as Line
- ⌘ Planned Dozer Line
- Planned Hand Line
- Planned Mixed Construction Line
- Planned Road as Line
- Planned Secondary Line
- Other
- Uncontained
- ▭ Wildfire Daily Fire Perimeter
- Trail
- 2 - HIGH CLEARANCE VEHICLES
- 1 - BASIC CUSTODIAL CARE (CLOSED)
- Stream Intermittent
- Stream Perennial
- 🌲 EXPERIMENTAL FOREST
- 🏠 Ranger District
- 🌲 National Forest
- 🌲 U.S. Forest Service



NW Team 6
8/15/2023 2136
Acres from IR and GPS
North American 1983 Datum.
LatLong Grid



County of tinn, Bureau of Land Management, State of Oregon| State of Oregon DOT, State of Oregon GEO, Esri Canada, Esri, HERE, Garmin, INCREMENT P, USGS, EPA, USDA -Sources: Esri, Airbus DS, USGS, NGA, NASA, CGIAR, N Robinson, NCEAS, NLS, OS, NMA, Geodatasysteisen, Rijkswaterstaat, GSA, Geoland, FEMA, Intermap and the GIS user community