

Division Tile

Lookout
OR-WIF-230327
08/16/2023
NIGHT

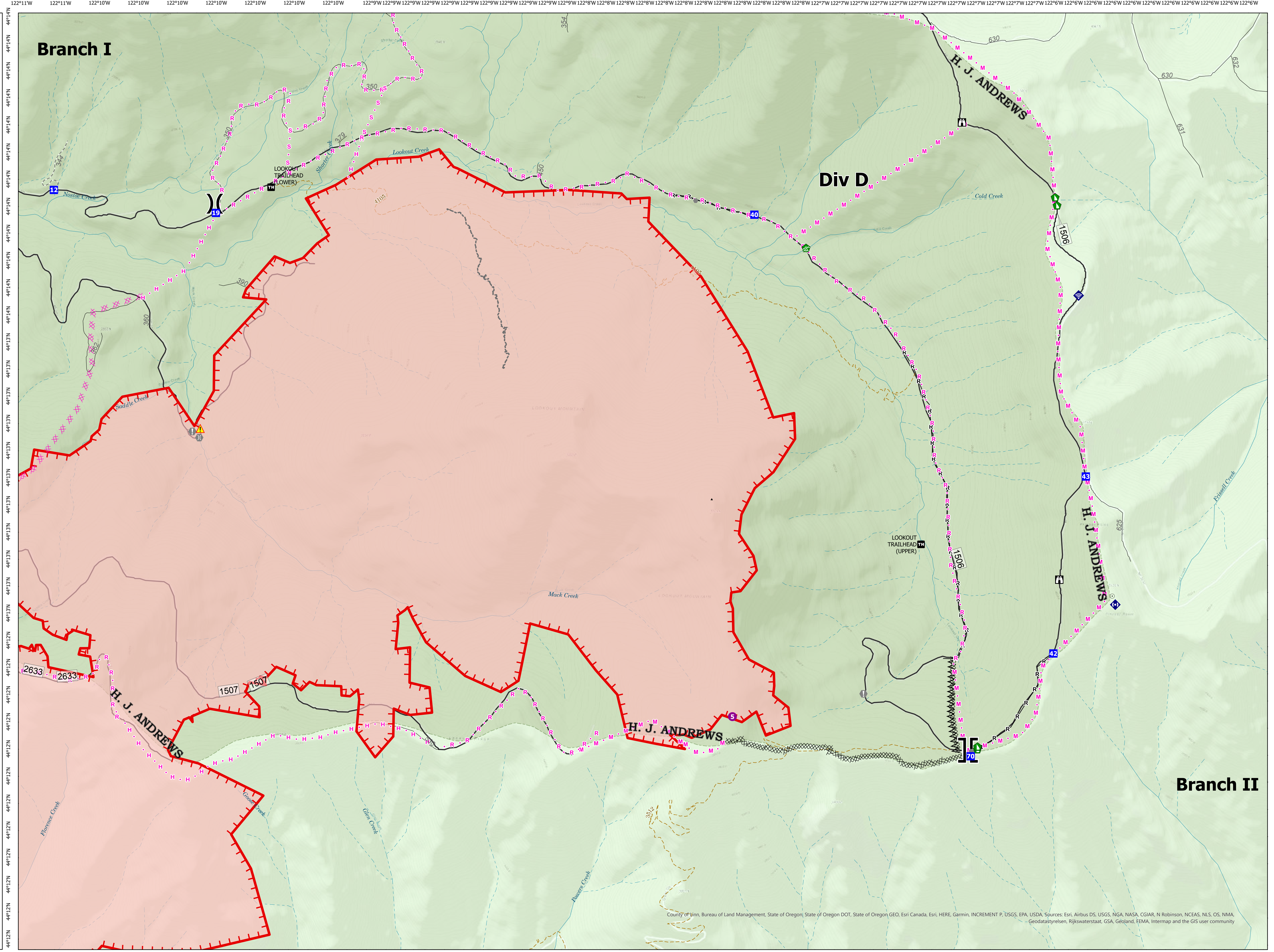
4271 acres
at 8/16/2023 1030

Div D

- Helispot
- ⎓ Division Break
- ⎓ Branch Break
- Drop Point
- 📍 Lookout
- ⚠ Value at Risk
- Other
- 🌉 Bridge
- 🏠 Water Development or Draft Site
- 🏠 Dozer Push
- 📶 Internet Access
- 📶 Repeater
- ⚠ Hazard
- ⋯ Completed Dozer Line
- ⋯ Completed Fuel Break
- Completed Road as Line
- ⋯ Planned Dozer Line
- ⋯ Planned Hand Line
- ⋯ Planned Mixed Construction Line
- ⋯ Planned Road as Line
- ⋯ Planned Secondary Line
- ⋯ Other
- 🔴 Uncontained
- 🔴 Wildfire Daily Fire Perimeter
- Trail
- 2 - HIGH CLEARANCE VEHICLES
- 1 - BASIC CUSTODIAL CARE (CLOSED)
- Stream Intermittent
- Stream Perennial
- 🌲 EXPERIMENTAL FOREST
- 🌲 Ranger District
- 🌲 National Forest
- 🌲 U.S. Forest Service



NW Team 6
8/16/2023 1659
Acres from IR and GPS
North American 1983 Datum.
LatLong Grid



County of Linn, Bureau of Land Management, State of Oregon; State of Oregon DOT, State of Oregon GEO, Esri Canada, Esri, HERE, Garmin, INCREMENT P, USGS, EPA, USDA, Sources: Esri, Airbus DS, USGS, NGA, NASA, CGIAR, N Robinson, NCEAS, NLS, OS, NMA, Geodatasystemen, Rijkswaterstaat, GSA, Geoland, FEMA, Intermap and the GIS user community