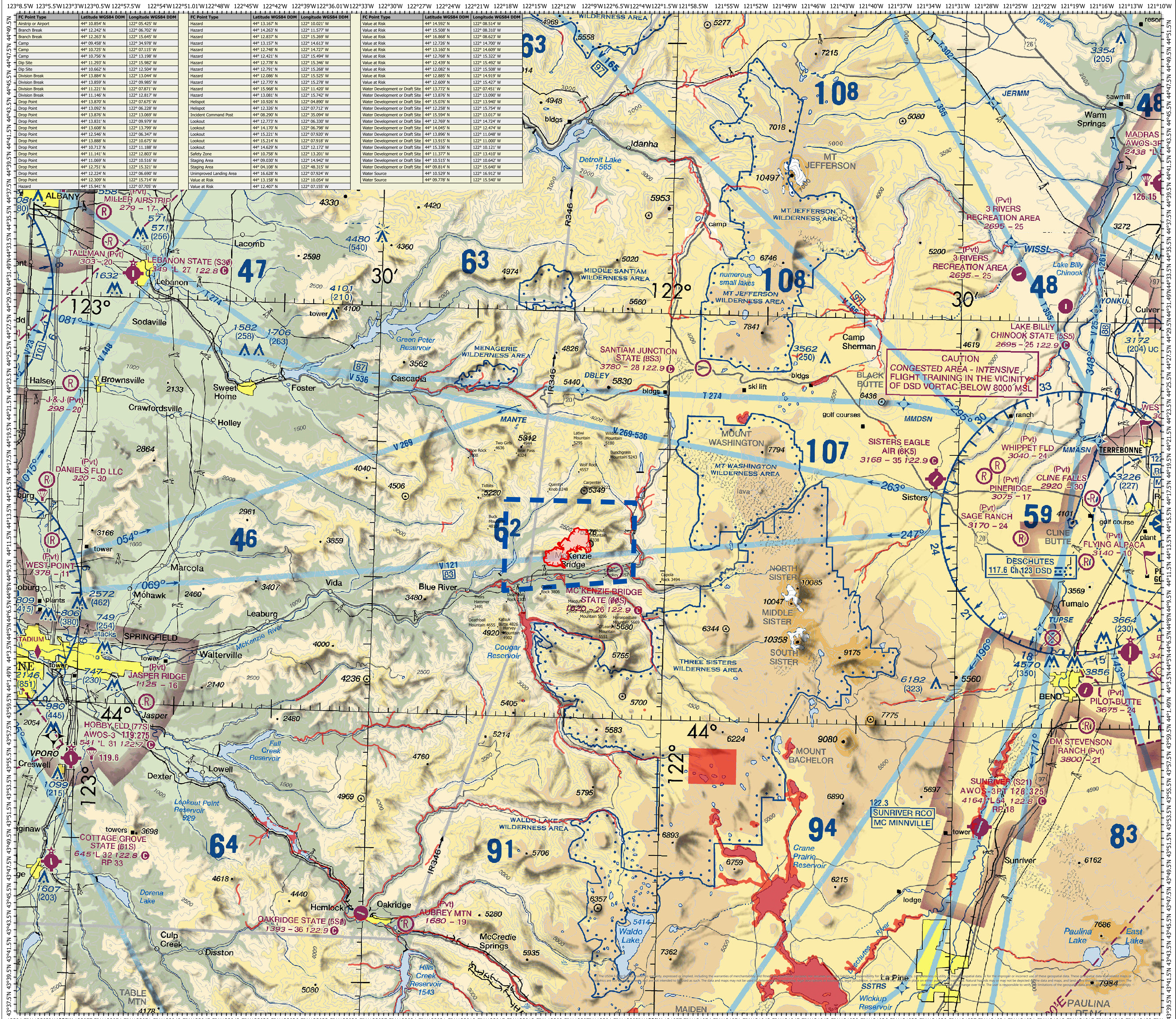
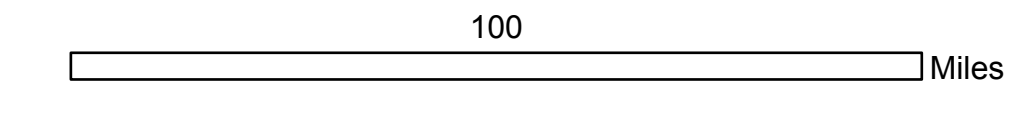
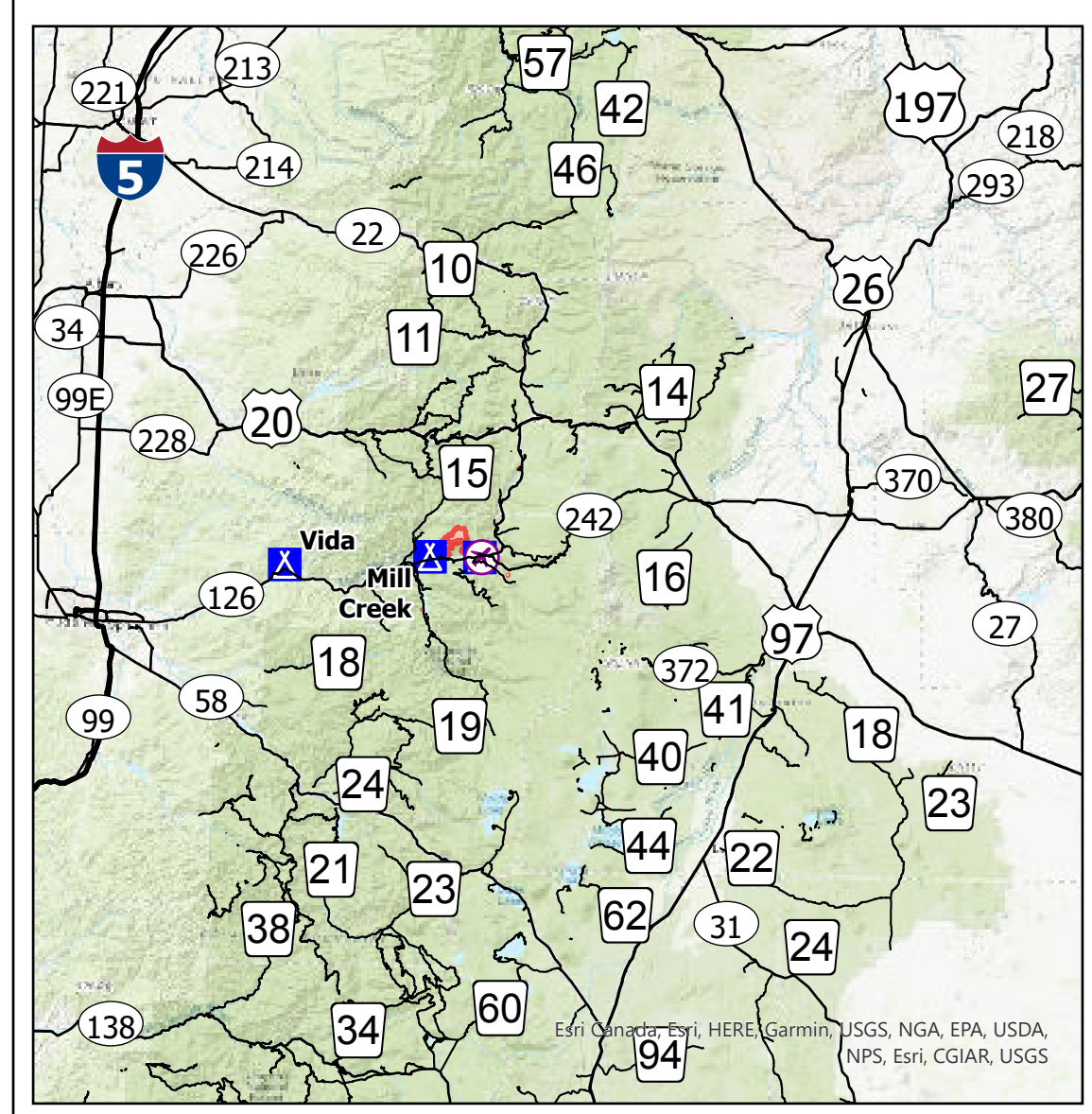
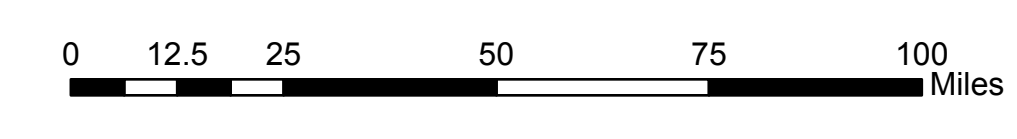


Lookout
OR-WIF-230327
08/16/2023
24 Hour

3710 acres at 8/15/2023 1715

- Temporary Flight Restriction
- Uncontained
- Wildfire Daily Fire Perimeter
- Aerial Fire Retardant Avoidance Areas: Terrestrial



FC Point Type	Latitude WGS84 DDM	Longitude WGS84 DDM	FC Point Type	Latitude WGS84 DDM	Longitude WGS84 DDM	FC Point Type	Latitude WGS84 DDM	Longitude WGS84 DDM
Arduco or Airport	44° 12.242' N	122° 06.702' W	Hazard	44° 12.837' N	122° 15.269' W	Value at Risk	44° 14.922' N	122° 08.310' W
Branch Break	44° 12.263' N	122° 15.645' W	Hazard	44° 13.157' N	122° 14.613' W	Value at Risk	44° 15.508' N	122° 11.577' W
Camp	44° 09.458' N	122° 14.787' W	Hazard	44° 12.748' N	122° 14.727' W	Value at Risk	44° 16.868' N	122° 08.623' W
Camp	44° 10.725' N	122° 07.115' W	Hazard	44° 12.421' N	122° 15.494' W	Value at Risk	44° 12.726' N	122° 14.700' W
Camp Site	44° 11.293' N	122° 15.920' W	Hazard	44° 12.778' N	122° 15.346' W	Value at Risk	44° 13.160' N	122° 14.609' W
Dip Site	44° 10.662' N	122° 15.504' W	Hazard	44° 12.791' N	122° 15.268' W	Value at Risk	44° 12.768' N	122° 15.327' W
Division Break	44° 13.884' N	122° 13.044' W	Hazard	44° 12.086' N	122° 15.525' W	Value at Risk	44° 12.492' N	122° 15.492' W
Division Break	44° 13.859' N	122° 09.985' W	Hazard	44° 12.770' N	122° 15.278' W	Value at Risk	44° 12.082' N	122° 15.508' W
Division Break	44° 11.221' N	122° 07.871' W	Hazard	44° 15.968' N	122° 11.420' W	Value at Risk	44° 12.885' N	122° 14.919' W
Drop Point	44° 11.146' N	122° 13.817' W	Hazard	44° 13.081' N	122° 15.742' W	Value at Risk	44° 12.609' N	122° 15.427' W
Drop Point	44° 13.070' N	122° 07.675' W	Hazard	44° 10.926' N	122° 04.890' W	Value at Risk	44° 13.772' N	122° 07.451' W
Drop Point	44° 13.092' N	122° 06.228' W	Helispot	44° 12.326' N	122° 07.712' W	Value at Risk	44° 13.876' N	122° 13.000' W
Drop Point	44° 13.876' N	122° 13.069' W	Incident Command Post	44° 08.290' N	122° 35.094' W	Value at Risk	44° 12.769' N	122° 14.724' W
Drop Point	44° 13.831' N	122° 09.979' W	Lookout	44° 12.773' N	122° 06.330' W	Value at Risk	44° 12.769' N	122° 14.724' W
Drop Point	44° 13.608' N	122° 13.799' W	Lookout	44° 14.170' N	122° 06.798' W	Value at Risk	44° 14.045' N	122° 12.474' W
Drop Point	44° 12.546' N	122° 06.347' W	Lookout	44° 15.221' N	122° 07.920' W	Value at Risk	44° 13.896' N	122° 11.048' W
Drop Point	44° 13.888' N	122° 10.675' W	Lookout	44° 15.214' N	122° 07.918' W	Value at Risk	44° 13.915' N	122° 11.000' W
Drop Point	44° 10.713' N	122° 11.188' W	Lookout	44° 14.629' N	122° 12.172' W	Value at Risk	44° 15.336' N	122° 10.121' W
Drop Point	44° 11.141' N	122° 12.803' W	Lookout	44° 10.758' N	122° 13.201' W	Value at Risk	44° 11.377' N	122° 13.410' W
Drop Point	44° 11.069' N	122° 10.516' W	Lookout	44° 09.030' N	122° 14.942' W	Value at Risk	44° 10.515' N	122° 10.642' W
Drop Point	44° 12.751' N	122° 15.321' W	Lookout	44° 04.108' N	122° 48.315' W	Value at Risk	44° 09.814' N	122° 15.640' W
Drop Point	44° 12.399' N	122° 12.711' W	Lookout	44° 13.158' N	122° 10.954' W	Value at Risk	44° 10.529' N	122° 16.912' W
Hazard	44° 15.941' N	122° 07.705' W	Lookout	44° 12.407' N	122° 07.155' W	Value at Risk	44° 09.778' N	122° 15.540' W