

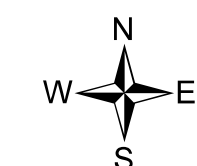
# Division Tile

Lookout  
OR-WIF-230327  
08/17/2023  
NIGHT

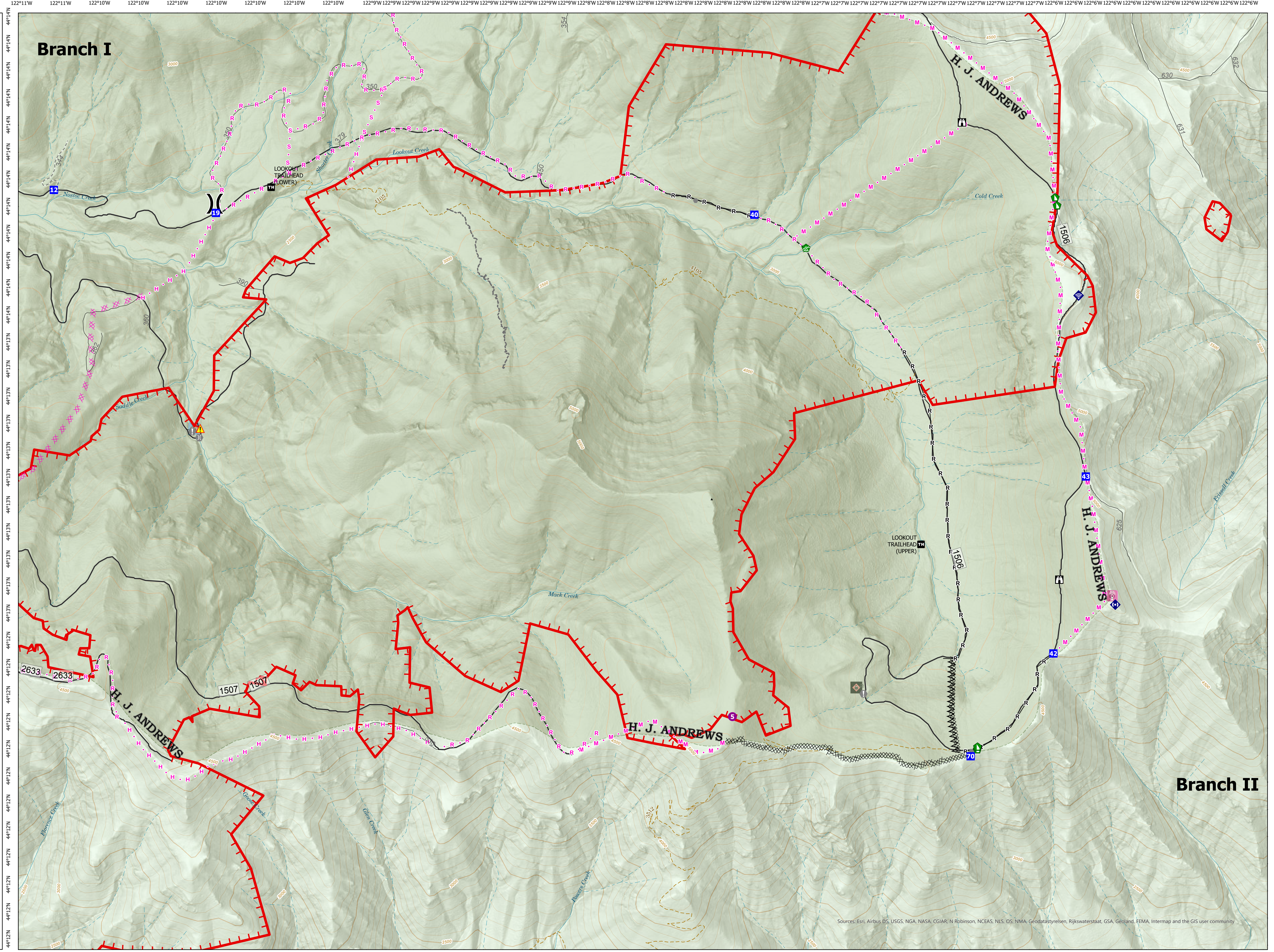
5,537 acres  
at 8/17/2023 1500

Div D

- Helispot
- )) Division Break
- Drop Point
- 🏠 Lookout
- ⚠️ Value at Risk
- Other
- 🌉 Bridge
- 🌿 Water Development or Draft Site
- 🚧 Dozer Push
- 📶 Internet Access
- 📶 Repeater
- ⚠️ Hazard
- ⊗ Completed Dozer Line
- ⊗ Completed Fuel Break
- Completed Road as Line
- ✂️ Planned Dozer Line
- ⋄ Planned Hand Line
- ⋄ Planned Mixed Construction Line
- ⋄ Planned Road as Line
- ⋄ Planned Secondary Line
- Other
- 🔴 Uncontained
- Trail
- 2 - High Clearance Vehicles
- 1 - Basic Custodial Care (Closed)
- Stream Intermittent
- Stream Perennial
- 🌲 Experimental Forest
- 🌲 Ranger District
- 🌲 National Forest
- 🌲 U.S. Forest Service
- 🌲 Region6Boundary
- 🌲 Ranger District
- 🌲 Experimental Forest
- 🌲 National Forest
- 🌲 U.S. Forest Service
- 🔥 Wx w/ Propane
- 📏 Gauging Station w/ Propane
- 📡 Radio Towers
- 📡 R06\_Structures\_Sync



NW Team 6  
8/17/2023 1645  
Acres from IR and GPS  
North American 1983 Datum.  
LatLong Grid



Sources: Esri, Airbus DS, USGS, NGA, NASA, CGIAR, N Robinson, NCEAS, NLS, OS, NMA, Geodatastyrelsen, Rijkswaterstaat, GSA, Geoland, FEMA, Intermap and the GIS user community