

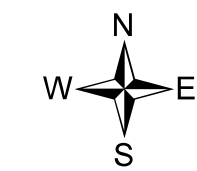
Division Tile

Lookout
OR-WIF-230327
08/17/2023
NIGHT

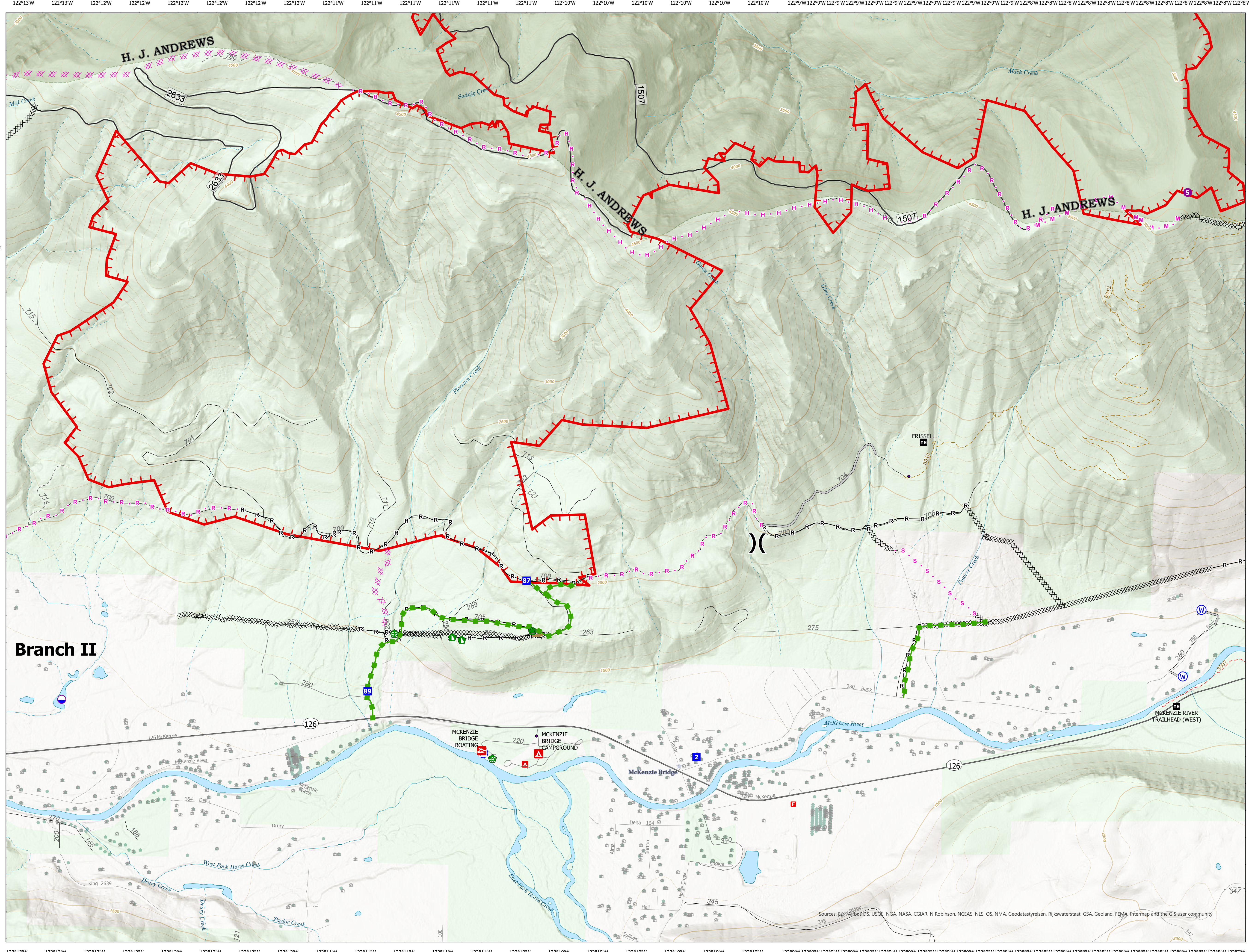
5,537 acres
at 8/17/2023 1500

Div Q

- Pump
- Dip Site
- Helispot
- Division Break
- Drop Point
- Water Development or Draft Site
- Stream Crossing
- Repair Point
- Dozer Push
- Water Source
- Completed Dozer Line
- Completed Road as Line
- Planned Dozer Line
- Planned Hand Line
- Planned Mixed Construction Line
- Planned Road as Line
- Planned Secondary Line
- Access or Improved Road
- Repair Line
- Escape Route
- Uncontained
- Trail
- National Designated Trail
- other road
- 3 - Suitable for Passenger Cars
- 2 - High Clearance Vehicles
- 1 - Basic Custodial Care (Closed)
- State Highway and Route
- NHD Waterbody
- Stream Intermittent
- Stream Perennial
- Stream
- Experimental Forest
- Ranger District
- National Forest
- U.S. Forest Service
- Other Land, Including Private
- City
- RegionBoundary
- Ranger District
- Experimental Forest
- National Forest
- U.S. Forest Service
- Other Land, Including Private
- Addresses
- R06_Structures_Sync



NW Team 6
8/17/2023 1646
Acres from IR and GPS
North American 1983 Datum.
LatLong Grid



Sources: Esri, DeLorme, USGS, NGA, NASA, CGIAR, N Robinson, NCEAS, NLS, OS, NMA, Geodatasystem, Rijkswaterstaat, GSA, Geoland, FEMA, Intermap and the GIS user community