

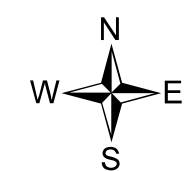
# Division Tile

Lookout  
OR-WIF-230327  
08/17/2023  
NIGHT

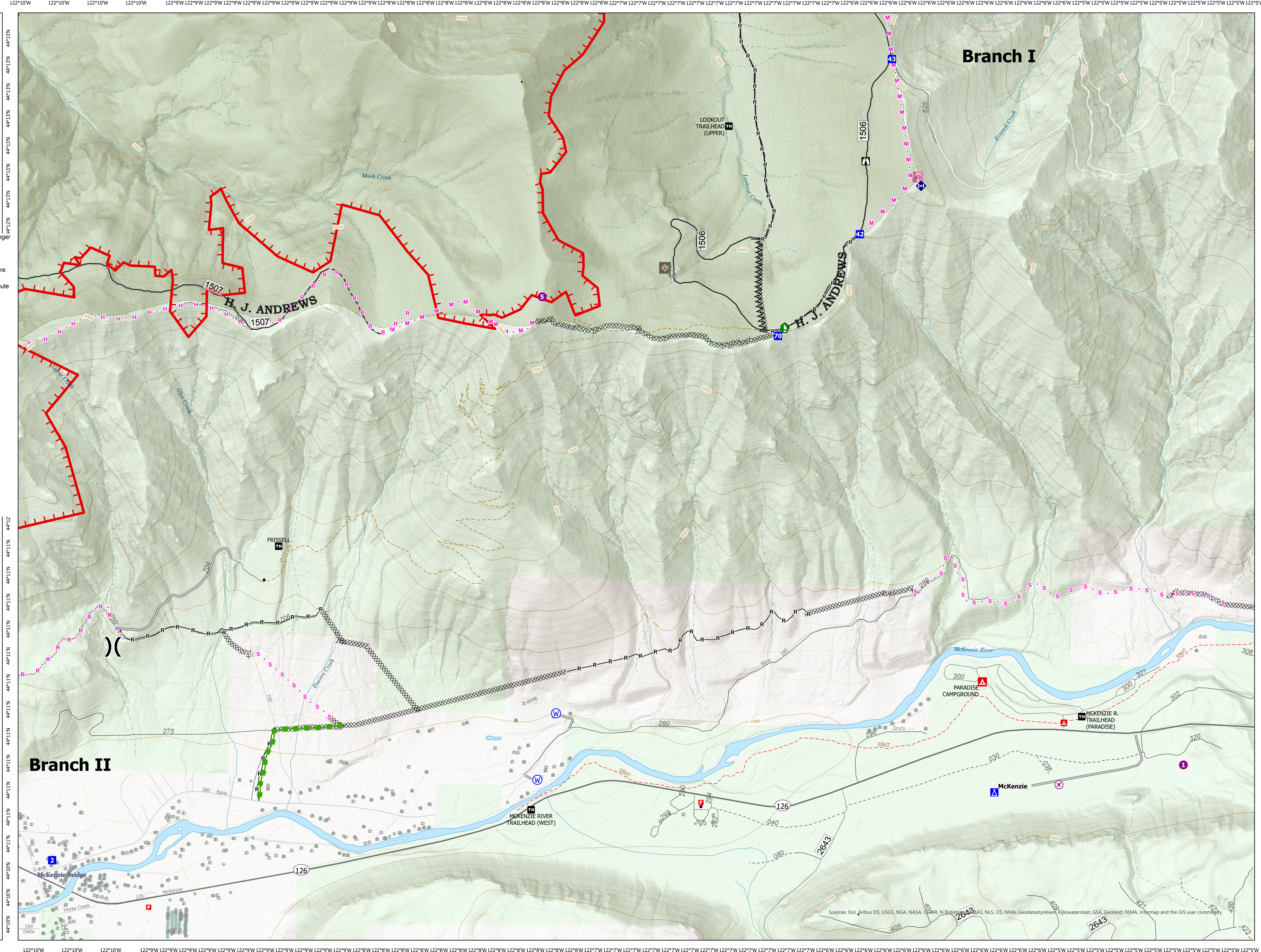
5,537 acres  
at 8/17/2023 1500

Div T

- ✈ Airstrip or Airport
- 📍 Helispot
- )) Division Break
- 📍 Drop Point
- 🏕 Camp
- 🏠 Lookout
- ⚠ Value at Risk
- ⚙ Other
- 🌉 Bridge
- 🚧 Dozer Push
- 📡 Repeater
- ⚠ Hazard
- 🚰 Water Source
- ⌘ Completed Dozer Line
- ⌘ Completed Fuel Break
- Completed Road as Line
- Planned Hand Line
- Planned Mixed Construction Line
- Planned Road as Line
- Planned Secondary Line
- Access or Improved Road
- Escape Route
- Uncontained
- Trail
- National Designated Trail
- other road
- 3 - Suitable for Passenger Cars
- 2 - High Clearance Vehicles
- 1 - Basic Custodial Care (Closed)
- State Highway and Route
- NHD Waterbody
- Stream Intermittent
- Stream Perennial
- Stream
- Experimental Forest
- Ranger District
- National Forest
- U.S. Forest Service
- Other Land, Including Private
- ★ City
- 🗺 Region6Boundary
- 🗺 Ranger District
- 🌲 Experimental Forest
- 🌲 National Forest
- 🌲 U.S. Forest Service
- 🌲 Other Land, Including Private
- 🔥 Wx w/ Propane
- 📡 Radio Towers
- 📍 Addresses
- 🏠 R06\_Structures\_Sync



NW Team 6  
8/17/2023 1647  
Acres from IR and GPS  
North American 1983 Datum.  
LatLong Grid



Branch I

Branch II

LOOKOUT TRAILHEAD (UPPER)

H. J. ANDREWS

H. J. ANDREWS

FRISSELL

PARADISE CAMPGROUND

MCKENZIE R. TRAILHEAD (PARADISE)

MCKENZIE RIVER TRAILHEAD (WEST)

McKenzie Bridge

Sources: Esri, Airbus DS, USGS, NGA, NASA, CEIAR, N Robinson, ADEAS, NLS, OS, NMA, Geodatasystemen, Rijkswaterstaat, GSA, Geoland, FEMA, Intermap and the GIS user community