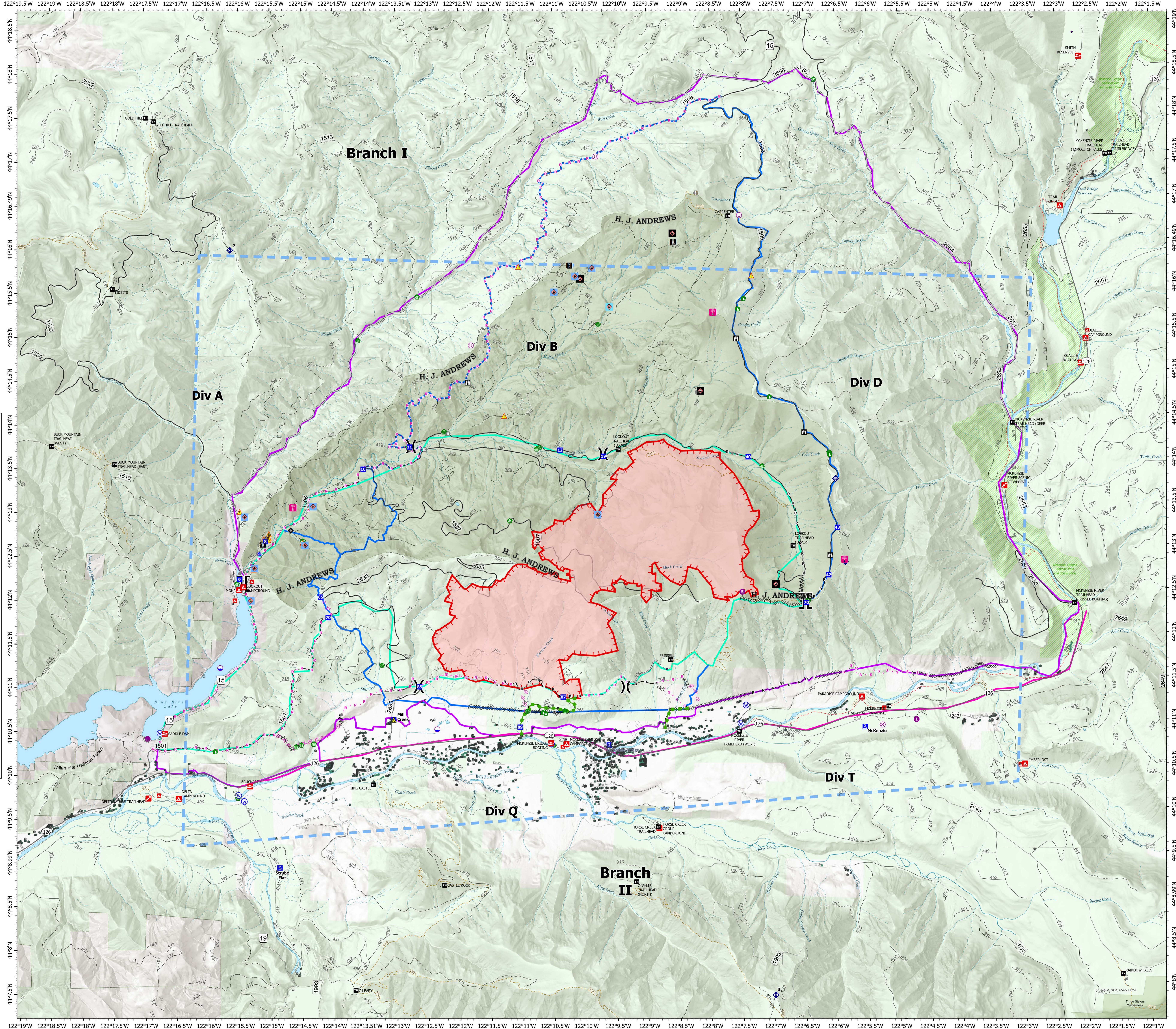


Strategic Operations

Lookout
OR-WIF-230327
08/17/2023
Day

4271 acres at 8/16/2023
1030



	Airstrip or Airport		State Highway and Route
	Dip Site		Forest Service Road
	Helispot		3 - SUITABLE FOR PASSENGER CARS
	Unimproved Landing Area		2 - HIGH CLEARANCE VEHICLES
	Division Break		1 - BASIC CUSTODIAL CARE (CLOSED)
	Branch Break		Other road
	Drop Point		City
	Camp		Campground
	Staging Area		Group Campground
	Lookout		Trailhead
	Value at Risk		Boating Site
	Other		Interpretive Site
	Gate		Trail
	Bridge		National Designated Trail
	Water Development or Draft Site		Stream Intermittent
	Stream Crossing		Stream Perennial
	Road Repair		Stream
	Repair Point		McKenzie River
	Landing or Log Deck		NHD Waterbody
	Dozer Push		Wild And Scenic River
	Internet Access		Recreational
	Repeater		EXPERIMENTAL FOREST
	Safety Zone		Wilderness_r06
	Hazard		Ranger District
	Water Source		National Forest
	Wildfire Daily Fire Perimeter		U.S. Forest Service
	Pump		Other Federal Land
	Completed Dozer Line		Other Land, Including Private
	Completed Fuel Break		0
	Completed Road as Line		1
	Planned Dozer Line		2
	Planned Road as Line		3
	Planned Secondary Line		4
	Access or Improved Road		5
	Repair Line		6
	Escape Route		RO6_Structures_Sync
	Temporary Flight Restriction		Addresses
	Uncontained		
	Primary		
	Alternate		
	Contingency		
	Emergency		



NW Team 6
8/16/2023 2055
Acres from IR and GPS
North American 1983 Datum, Lat/Long
Grid