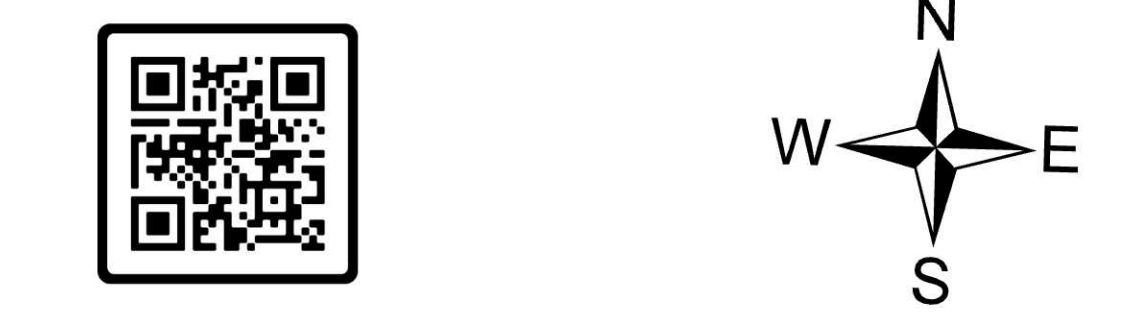
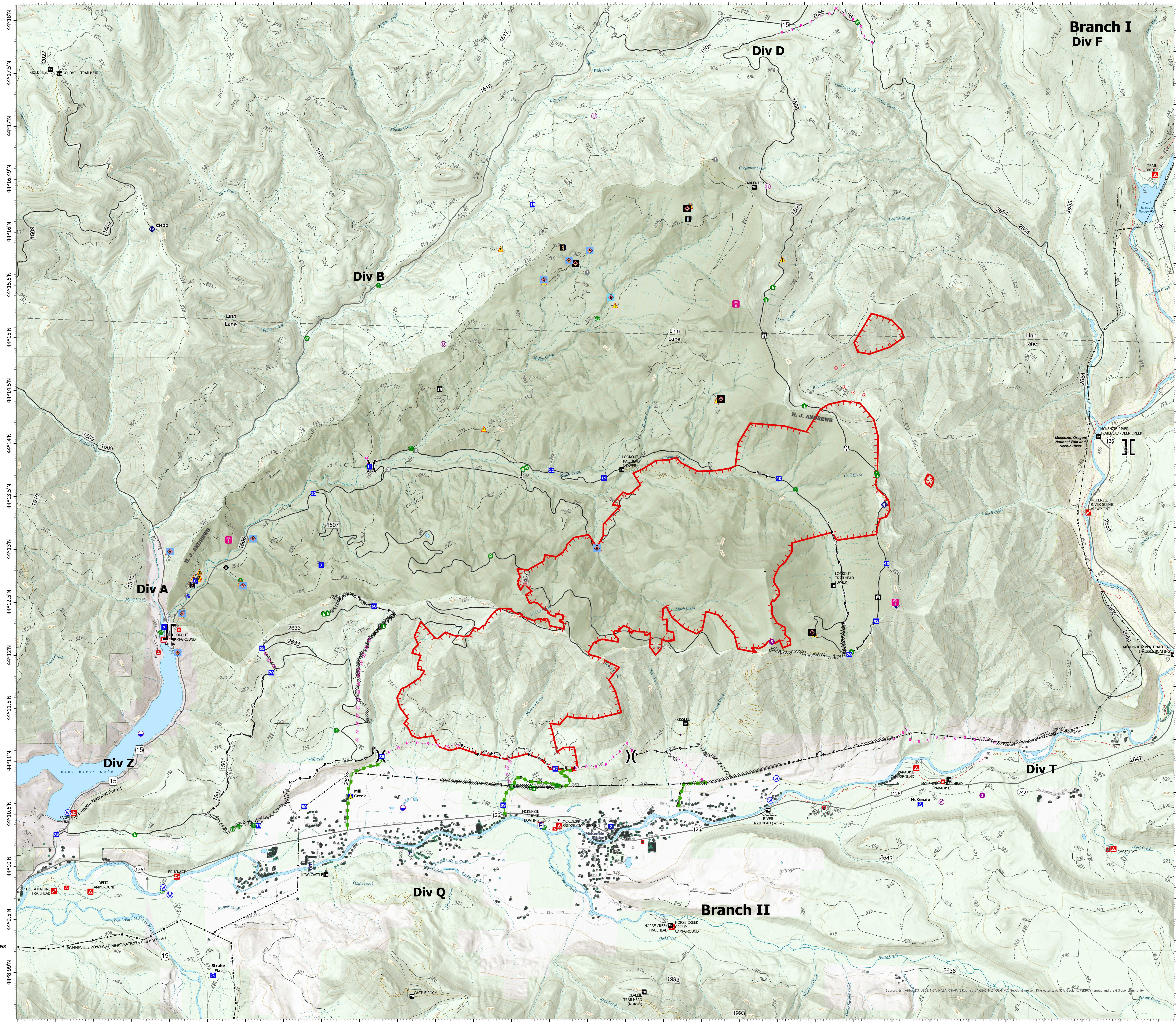


# Operations

Lookout  
OR-WIF-230327  
08/18/2023  
DAY

5,537 acres at 8/17/2023  
1500

- Airstrip or Airport
- Dip Site
- Helispot
- Unimproved Landing Area
- Division Break
- Branch Break
- Drop Point
- Camp
- Staging Area
- Lookout
- Hot Spot - Spot Fire
- Value at Risk
- Other
- Gate
- Bridge
- Water Development or Draft Site
- Stream Crossing
- Road Repair
- Repair Point
- Landing or Log Deck
- Dozer Push
- Internet Access
- Repeater
- Safety Zone
- Hazard
- Water Source
- Wildfire Daily Fire Perimeter
- Pump
- Completed Dozer Line
- Completed Fuel Break
- Completed Hand Line
- Completed Road as Line
- Planned Dozer Line
- Planned Mixed Construction Line
- Planned Road as Line
- Planned Secondary Line
- Repair Line
- Escape Route
- Uncontained
- State Highway and Route
- Forest Service Road
- Passenger Cars: 3, 4, 5
- High Clearance Vehicles: 2
- Basic Custodial Care: 1 (CLOSED)
- Other Road
- Gap; Summit
- Pillar; Crater
- Campground
- Group Campground
- Trailhead
- Boating Site
- Interpretive Site
- Fire Station / EMS Station
- Forest Service
- Trail
- National Designated Trail
- Transmission Lines
- Stream Intermittent
- Stream Perennial
- Stream
- McKenzie River
- NHD Waterbody
- Wild And Scenic River
- Recreational
- EXPERIMENTAL FOREST
- Ranger District
- National Forest
- U.S. Forest Service
- Other Federal Land
- Other Land, Including Private
- Campground
- Facility
- R06\_Structures\_Sync
- Addresses
- Wx Tower
- Wx w/ Propane
- Rain Gauge
- Gauging Station
- Gauging Station w/ Propane
- NEON Stream Gauge w/ Propane
- Radio Towers
- City
- RegionBoundary
- Ranger District
- Recreational
- EXPERIMENTAL FOREST
- National Forest
- U.S. Forest Service
- Other Federal Land
- Other Land, Including Private
- 500 foot contour
- 100 foot contour
- County Line GTAC
- County Boundary
- EWEB\_CarmenTransmission\_20
- LabelLines



0 0.25 0.5 1 1.5 2 Miles

NW Team 6  
8/18/2023 0142  
Acres from IR and GPS  
North American 1983 Datum, LatLong  
Grid

Branch I  
Div F

Div D

Div B

Div A

Div Z

Div Q

Branch II

Div T