

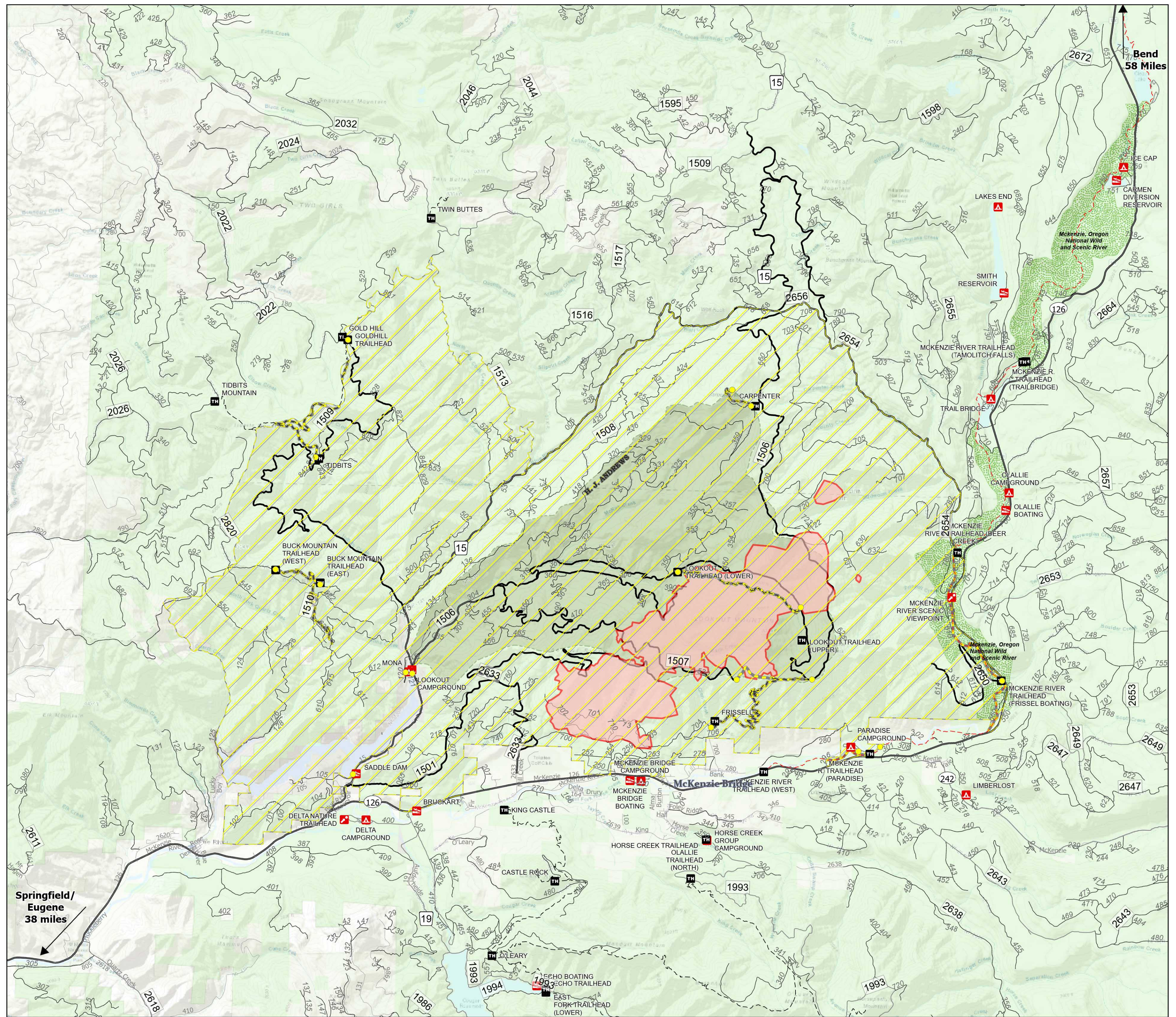
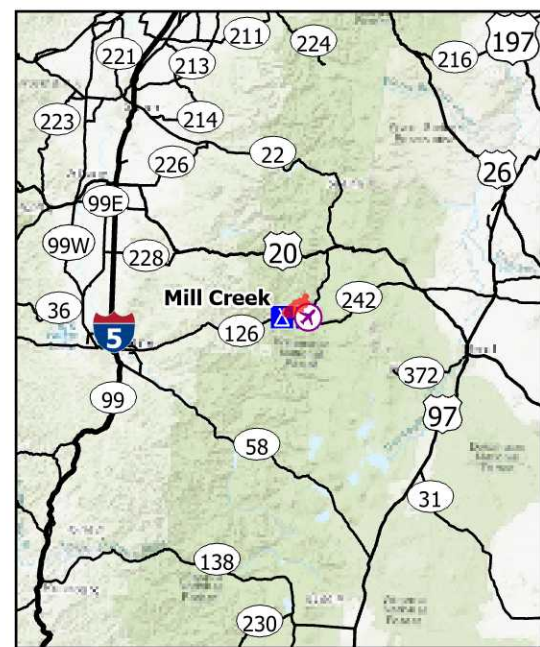
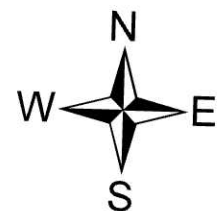
Public Information

**Lookout
OR-WIF-230327
08/18/2023
DAY**

5,537 acres at
8/17/2023 1500

- Site Closure
- ▬ Road/Trail Closure
- ▨ Closure Areas
- ▭ Wildfire Daily Fire Perimeter
- ▲ Campground
- ▲ Group Campground
- TH Trailhead
- Boating Site
- Interpretive Site
- - - Trail
- - - National Designated Trail
- ★ City
- Wild And Scenic River
- Recreational
- H. J. Andrews Experimental Forest
- U.S. Forest Service
- Other Federal Land
- Other Land, Including Private

0 0.5 1 2 Miles



Bend
58 Miles

Springfield/
Eugene
38 miles