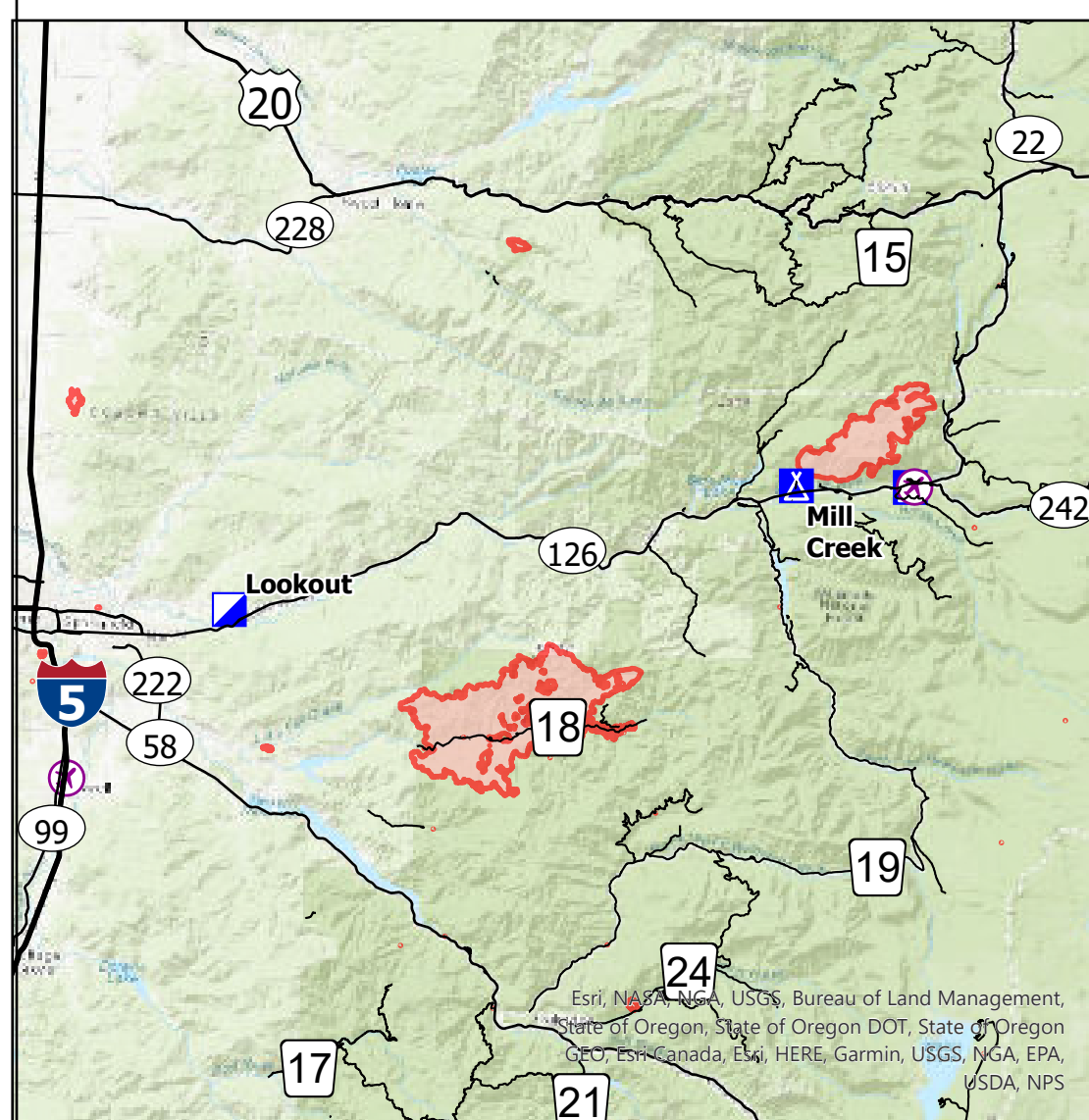
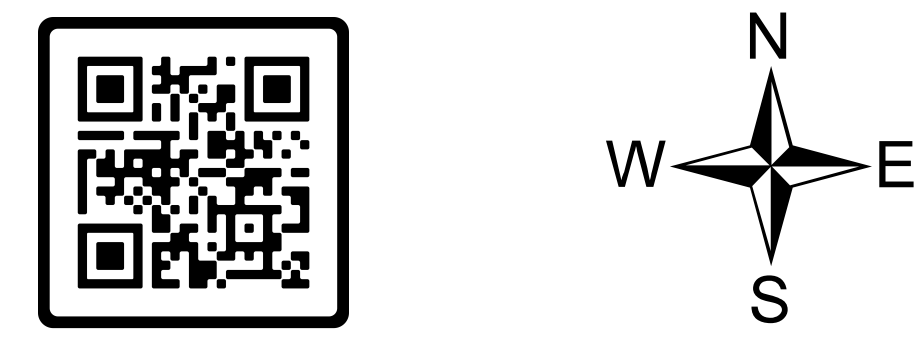


# Medical Evacuation

**Lookout**  
**OR-WIF-230327**  
**08/20/2023 24 Hour**

10,521 acres at 08/19/2023 2019

- Wildfire Daily Fire Perimeter
- Estimated Ground Evacuation Time (Fine)
  - 1 to 2 Hours
  - 2 to 4 Hours
  - 4 to 6 Hours
  - More than 6 Hours
- Helispot
- Helibase
- Sling Site
- Unimproved Landing Area
- Incident Command Post
- Camp
- Staging Area
- Safety Zone
- Ranger District
- Interstate Highway
- US Highway
- State Highway and Route



NW Team 6  
8/20/2023 0042  
Acres from IR and GPS  
WGS 1984 Datum, Lat/Long Grid

