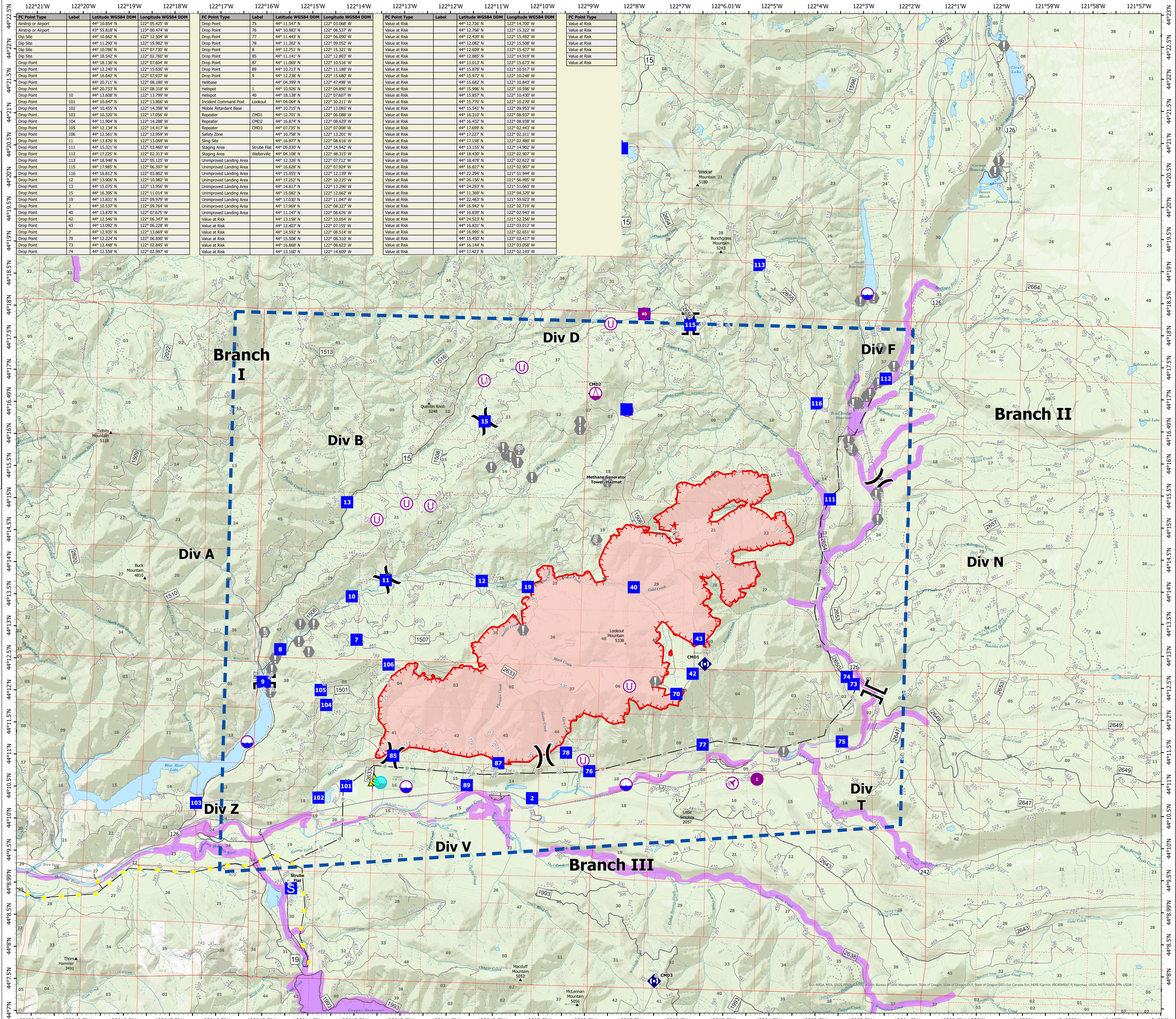
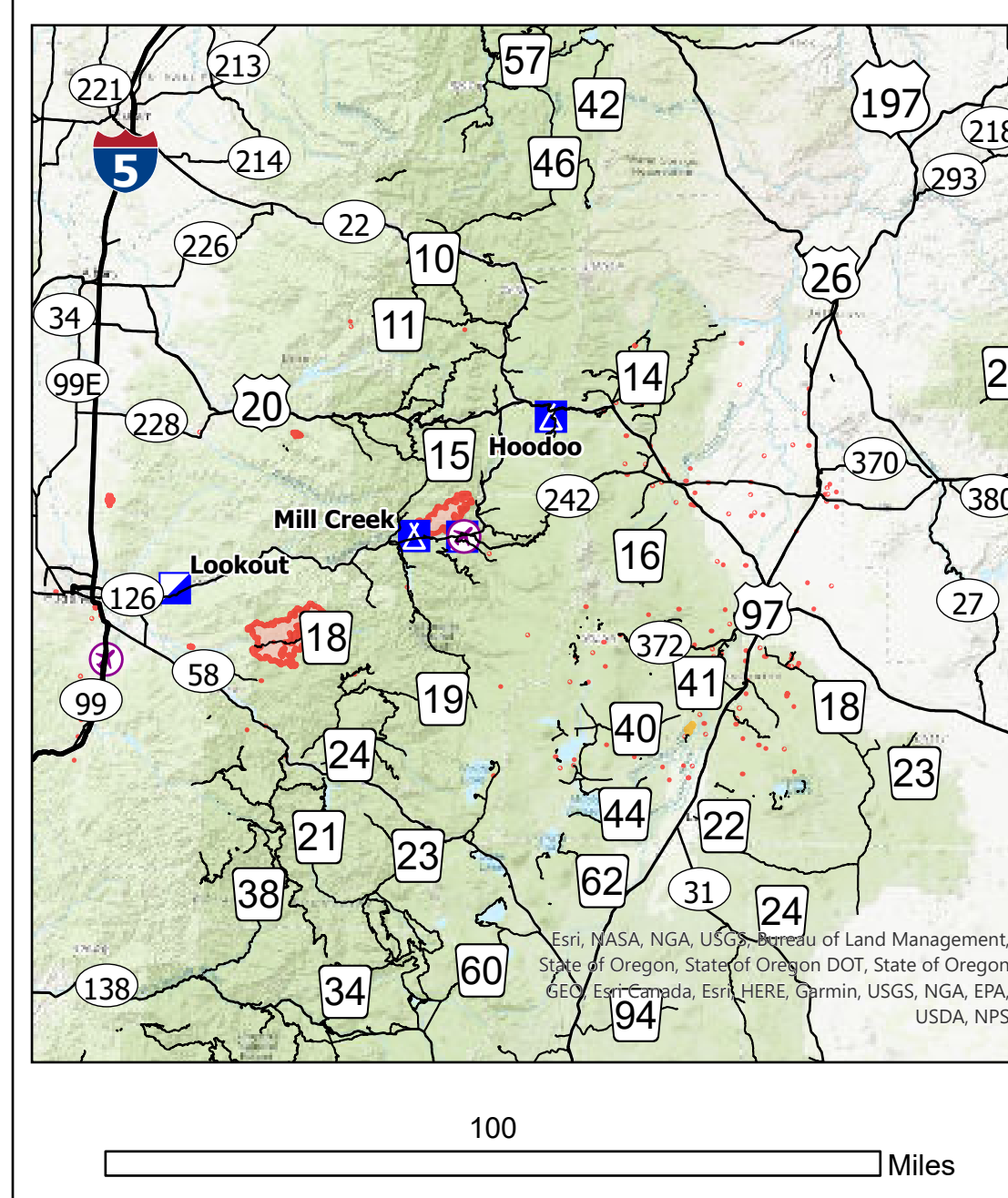
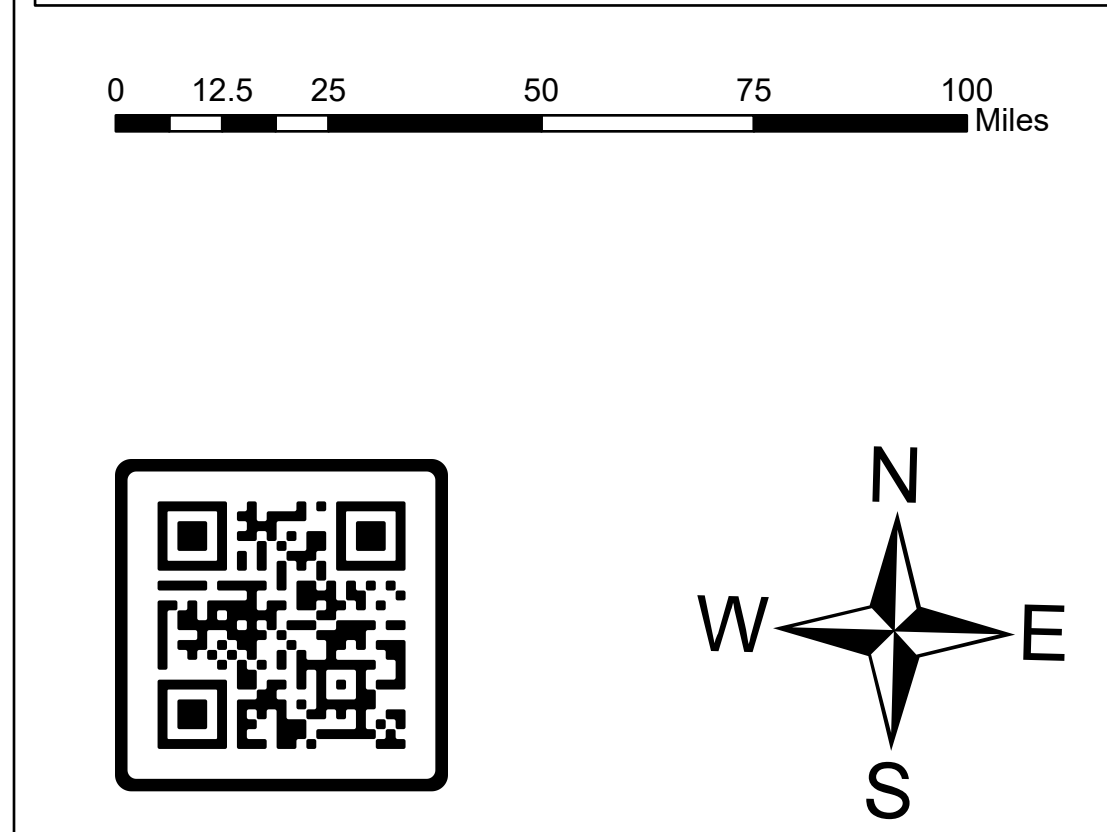


Air Operations

**Lookout
OR-WIF-230327**
08/20/2023 24 Hour
10,521 acres at 08/19/2023 2019

- Airstrip or Airport
- Dip Site
- Mobile Retardant Base
- Helispot
- Sling Site
- Unimproved Landing Area
- Division Break
- Branch Break
- Drop Point
- Staging Area
- Value at Risk
- Repeater
- Safety Zone
- Temporary Flight Restriction
- Uncontained
- Wildfire Daily Fire Perimeter
- State Highway and Route
- 3 - Suitable for Passenger Cars
- 2 - High Clearance Vehicles
- 1 - Basic Custodial Care (Closed)
- Aerial Fire Retardant Avoidance Areas: Terrestrial
- De-Energized Transmission Line
- Energized Transmission Line
- Energized Transmission Line



FC Point Type	Label	Latitude WGS84 DDM	Longitude WGS84 DDM	FC Point Type	Label	Latitude WGS84 DDM	Longitude WGS84 DDM	FC Point Type	Label	Latitude WGS84 DDM	Longitude WGS84 DDM	FC Point Type	Label	Latitude WGS84 DDM	Longitude WGS84 DDM
Airstrip or Airport	43	44° 10.854' N	122° 05.435' W	Drop Point	75	44° 11.547' N	122° 02.066' W	Value at Risk	44° 12.728' N	122° 14.700' W	Value at Risk	Value at Risk	Value at Risk	Value at Risk	Value at Risk
Airstrip or Airport	43	44° 10.854' N	122° 05.435' W	Drop Point	76	44° 10.983' N	122° 08.537' W	Value at Risk	44° 12.768' N	122° 14.700' W	Value at Risk	Value at Risk	Value at Risk	Value at Risk	Value at Risk
Dip Site	44	44° 10.662' N	122° 12.504' W	Drop Point	77	44° 11.443' N	122° 06.090' W	Value at Risk	44° 12.439' N	122° 15.492' W	Value at Risk	Value at Risk	Value at Risk	Value at Risk	Value at Risk
Dip Site	44	44° 11.293' N	122° 15.982' W	Drop Point	78	44° 11.262' N	122° 09.052' W	Value at Risk	44° 12.082' N	122° 15.508' W	Value at Risk	Value at Risk	Value at Risk	Value at Risk	Value at Risk
Dip Site	44	44° 10.786' N	122° 07.730' W	Drop Point	8	44° 12.751' N	122° 15.321' W	Value at Risk	44° 12.609' N	122° 15.427' W	Value at Risk	Value at Risk	Value at Risk	Value at Risk	Value at Risk
Dip Site	44	44° 10.542' N	122° 02.780' W	Drop Point	85	44° 11.141' N	122° 12.803' W	Value at Risk	44° 12.885' N	122° 16.919' W	Value at Risk	Value at Risk	Value at Risk	Value at Risk	Value at Risk
Drop Point	44	44° 10.336' N	122° 07.604' W	Drop Point	87	44° 11.069' N	122° 05.516' W	Value at Risk	44° 13.013' N	122° 15.079' W	Value at Risk	Value at Risk	Value at Risk	Value at Risk	Value at Risk
Drop Point	44	44° 12.246' N	122° 15.636' W	Drop Point	89	44° 10.713' N	122° 11.188' W	Value at Risk	44° 15.878' N	122° 10.517' W	Value at Risk	Value at Risk	Value at Risk	Value at Risk	Value at Risk
Drop Point	44	44° 16.642' N	122° 07.937' W	Drop Point	9	44° 15.238' N	122° 10.248' W	Value at Risk	44° 15.972' N	122° 10.248' W	Value at Risk	Value at Risk	Value at Risk	Value at Risk	Value at Risk
Drop Point	44	44° 20.711' N	122° 08.186' W	Helibase	44	44° 04.399' N	122° 47.498' W	Value at Risk	44° 15.682' N	122° 10.843' W	Value at Risk	Value at Risk	Value at Risk	Value at Risk	Value at Risk
Drop Point	44	44° 20.733' N	122° 08.318' W	Helispot	1	44° 10.926' N	122° 04.890' W	Value at Risk	44° 15.996' N	122° 10.596' W	Value at Risk	Value at Risk	Value at Risk	Value at Risk	Value at Risk
Drop Point	10	44° 13.808' N	122° 13.799' W	Helispot	40	44° 18.138' N	122° 07.607' W	Value at Risk	44° 15.857' N	122° 10.430' W	Value at Risk	Value at Risk	Value at Risk	Value at Risk	Value at Risk
Drop Point	101	44° 10.647' N	122° 13.869' W	Incident Command Post	Lookout	44° 10.664' N	122° 05.811' W	Value at Risk	44° 15.770' N	122° 10.270' W	Value at Risk	Value at Risk	Value at Risk	Value at Risk	Value at Risk
Drop Point	102	44° 10.455' N	122° 14.398' W	Mobile Retardant Base	Lookout	44° 10.715' N	122° 13.065' W	Value at Risk	44° 15.541' N	122° 09.953' W	Value at Risk	Value at Risk	Value at Risk	Value at Risk	Value at Risk
Drop Point	103	44° 10.320' N	122° 17.056' W	Repeater	CHD1	44° 12.701' N	122° 06.088' W	Value at Risk	44° 16.310' N	122° 08.937' W	Value at Risk	Value at Risk	Value at Risk	Value at Risk	Value at Risk
Drop Point	104	44° 11.904' N	122° 14.288' W	Repeater	CHD2	44° 16.874' N	122° 08.629' W	Value at Risk	44° 16.432' N	122° 08.938' W	Value at Risk	Value at Risk	Value at Risk	Value at Risk	Value at Risk
Drop Point	105	44° 12.134' N	122° 14.417' W	Repeater	CHD3	44° 07.735' N	122° 07.008' W	Value at Risk	44° 17.699' N	122° 02.443' W	Value at Risk	Value at Risk	Value at Risk	Value at Risk	Value at Risk
Drop Point	106	44° 13.561' N	122° 13.959' W	Safety Zone	Lookout	44° 10.798' N	122° 13.201' W	Value at Risk	44° 17.227' N	122° 02.311' W	Value at Risk	Value at Risk	Value at Risk	Value at Risk	Value at Risk
Drop Point	111	44° 13.869' N	122° 13.869' W	Sling Site	Lookout	44° 10.664' N	122° 05.811' W	Value at Risk	44° 16.877' N	122° 02.480' W	Value at Risk	Value at Risk	Value at Risk	Value at Risk	Value at Risk
Drop Point	111	44° 15.321' N	122° 03.460' W	Staging Area	Strube Flat	44° 09.030' N	122° 14.942' W	Value at Risk	44° 13.155' N	122° 14.902' W	Value at Risk	Value at Risk	Value at Risk	Value at Risk	Value at Risk
Drop Point	112	44° 17.225' N	122° 02.313' W	Staging Area	Walterville	44° 04.108' N	122° 48.315' W	Value at Risk	44° 18.430' N	122° 02.907' W	Value at Risk	Value at Risk	Value at Risk	Value at Risk	Value at Risk
Drop Point	113	44° 18.948' N	122° 05.125' W	Unimproved Landing Area	Walterville	44° 12.326' N	122° 07.712' W	Value at Risk	44° 18.479' N	122° 02.622' W	Value at Risk	Value at Risk	Value at Risk	Value at Risk	Value at Risk
Drop Point	115	44° 17.985' N	122° 06.597' W	Unimproved Landing Area	Walterville	44° 16.628' N	122° 07.924' W	Value at Risk	44° 16.827' N	122° 02.907' W	Value at Risk	Value at Risk	Value at Risk	Value at Risk	Value at Risk
Drop Point	116	44° 16.812' N	122° 03.802' W	Unimproved Landing Area	Walterville	44° 15.055' N	122° 12.133' W	Value at Risk	44° 16.898' N	121° 51.948' W	Value at Risk	Value at Risk	Value at Risk	Value at Risk	Value at Risk
Drop Point	117	44° 13.902' N	122° 10.902' W	Unimproved Landing Area	Walterville	44° 17.252' N	122° 10.235' W	Value at Risk	44° 16.256' N	121° 56.495' W	Value at Risk	Value at Risk	Value at Risk	Value at Risk	Value at Risk
Drop Point	12	44° 15.075' N	122° 13.956' W	Unimproved Landing Area	Walterville	44° 14.817' N	122° 13.296' W	Value at Risk	44° 24.293' N	121° 51.663' W	Value at Risk	Value at Risk	Value at Risk	Value at Risk	Value at Risk
Drop Point	15	44° 16.395' N	122° 11.014' W	Unimproved Landing Area	Walterville	44° 15.082' N	122° 12.662' W	Value at Risk	44° 11.369' N	122° 04.329' W	Value at Risk	Value at Risk	Value at Risk	Value at Risk	Value at Risk
Drop Point	19	44° 13.831' N	122° 09.979' W	Unimproved Landing Area	Walterville	44° 17.030' N	122° 11.047' W	Value at Risk	44° 22.463' N	121° 59.923' W	Value at Risk	Value at Risk	Value at Risk	Value at Risk	Value at Risk
Drop Point	2	44° 10.537' N	122° 09.764' W	Unimproved Landing Area	Walterville	44° 17.969' N	122° 08.327' W	Value at Risk	44° 16.942' N	122° 02.719' W	Value at Risk	Value at Risk	Value at Risk	Value at Risk	Value at Risk
Drop Point	40	44° 10.876' N	122° 07.975' W	Unimproved Landing Area	Walterville	44° 11.447' N	122° 08.676' W	Value at Risk	44° 16.839' N	122° 02.943' W	Value at Risk	Value at Risk	Value at Risk	Value at Risk	Value at Risk
Drop Point	42	44° 13.546' N	122° 06.347' W	Value at Risk	Walterville	44° 13.158' N	122° 10.954' W	Value at Risk	44° 34.523' N	121° 52.256' W	Value at Risk	Value at Risk	Value at Risk	Value at Risk	Value at Risk
Drop Point	43	44° 13.092' N	122° 06.328' W	Value at Risk	Walterville	44° 12.407' N	122° 07.155' W	Value at Risk	44° 16.831' N	122° 03.012' W	Value at Risk	Value at Risk	Value at Risk	Value at Risk	Value at Risk
Drop Point	7	44° 12.935' N	122° 13.669' W	Value at Risk	Walterville	44° 14.592' N	122° 08.514' W	Value at Risk	44° 16.995' N	122° 02.651' W	Value at Risk	Value at Risk	Value at Risk	Value at Risk	Value at Risk
Drop Point	70	44° 12.224' N	122° 06.690' W	Value at Risk	Walterville	44° 15.508' N	122° 08.310' W	Value at Risk	44° 15.450' N	122° 02.417' W	Value at Risk	Value at Risk	Value at Risk	Value at Risk	Value at Risk
Drop Point	73	44° 12.448' N	122° 02.845' W	Value at Risk	Walterville	44° 16.868' N	122° 02.845' W	Value at Risk	44° 16.144' N	122° 03.058' W	Value at Risk	Value at Risk	Value at Risk	Value at Risk	Value at Risk
Drop Point	74	44° 12.558' N	122° 02.997' W	Value at Risk	Walterville	44° 13.160' N	122° 14.609' W	Value at Risk	44° 17.423' N	122° 02.143' W	Value at Risk	Value at Risk	Value at Risk	Value at Risk	Value at Risk