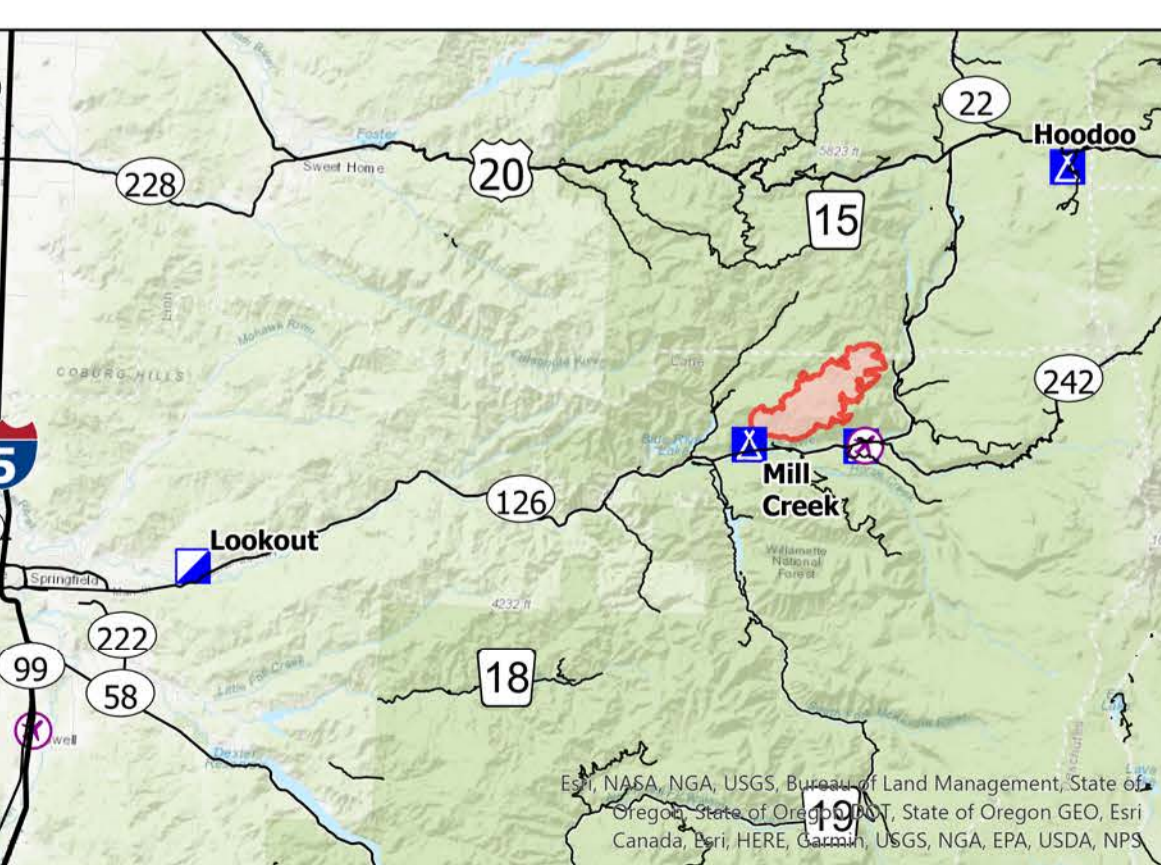


Briefing

Lookout
OR-WIF-230327
08/20/2023 24 Hour

11,174 acres at 08/20/2023 1000 PMT

- Hellsport
- Division Break
- Branch Break
- Drop Point
- Camp
- Staging Area
- Hot Spot - Spot Fire
- Temporary Flight Restriction
- Contained
- Uncontained
- State Highway and Route
- Forest Service Road
- 3 - SUITABLE FOR PASSENGER CARS
- 2 - HIGH CLEARANCE VEHICLES
- 1 - BASIC CUSTODIAL CARE (CLOSED)
- other road
- City
- RANGER DISTRICT OFFICE
- Campground
- Group Campground
- Picnic Site
- Boating Site
- Interpretive Site
- Snowpark
- Trail
- National Designated Trail
- Wild And Scenic River
- Recreational
- EXPERIMENTAL FOREST
- Wilderness_r06
- Ranger District
- National Forest
- U.S. Forest Service
- Other Federal Land
- Other Land, Including Private
- NHDAreasUSGS_1
- NHDWaterbody
- Stream Intermittent
- Stream Perennial
- Stream



40 Miles

8/20/2023 1558
Acres from IR and GPS
North American 1983 Datum, Lat/Long
Grid

