

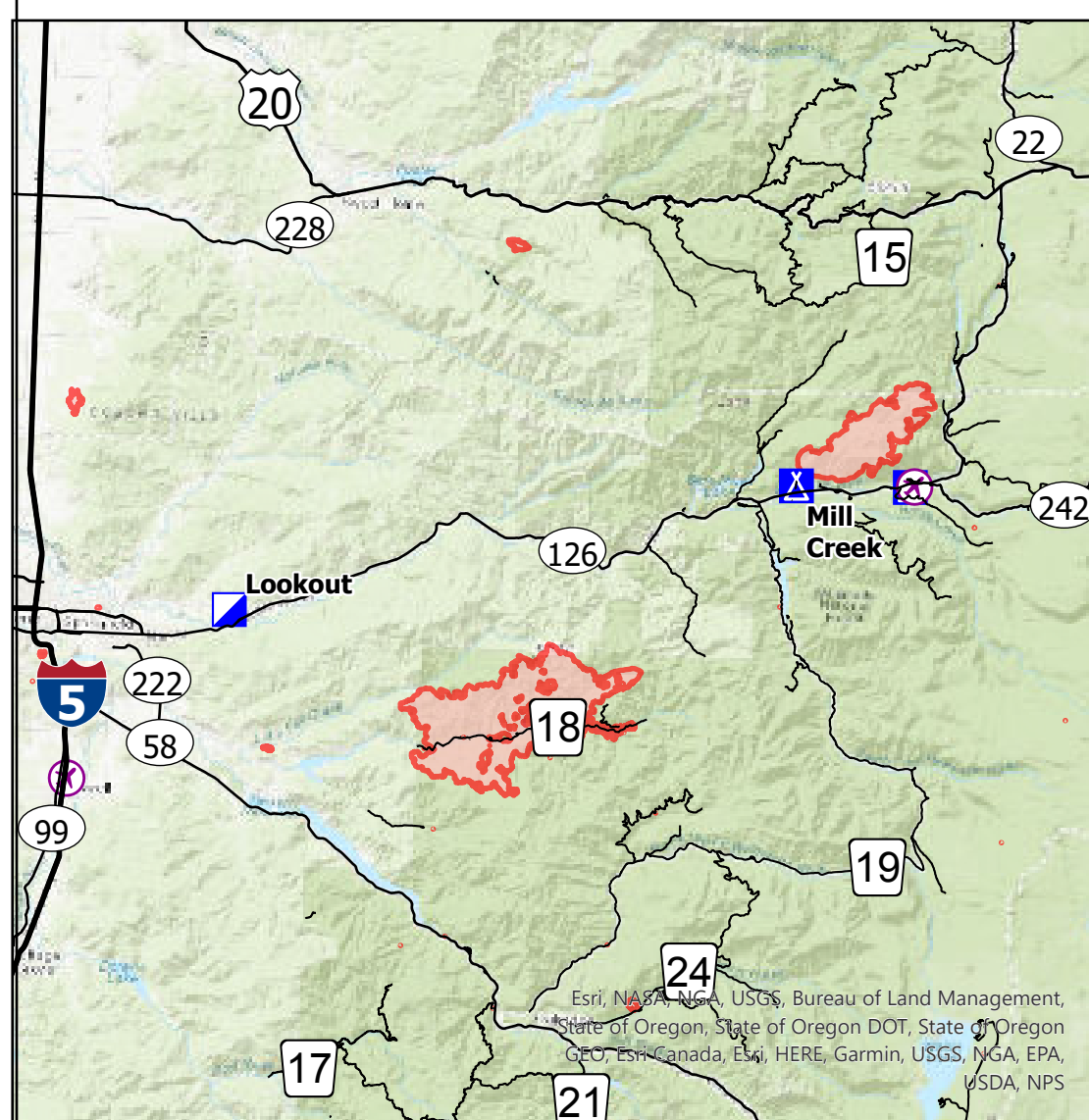
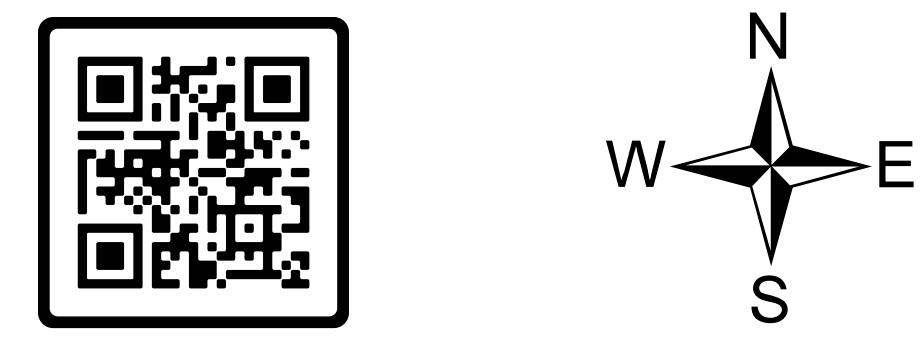
Medical Evacuation

Lookout
OR-WIF-230327
08/21/2023 24 Hour

11,174 acres at 08/20/2023 1000 PMT

- Wildfire Daily Fire Perimeter
- Estimated Ground Evacuation Time (Fine)
 - 1 to 2 Hours
 - 2 to 4 Hours
 - 4 to 6 Hours
 - More than 6 Hours
- Helispot
- Helibase
- Sling Site
- Unimproved Landing Area
- Incident Command Post
- Camp
- Staging Area
- Safety Zone
- Ranger District
- Interstate Highway
- US Highway
- State Highway and Route

0 5 10 Miles



NW Team 6
8/20/2023 2317
Acres from IR and GPS
WGS 1984 Datum, Lat,Long Grid

