

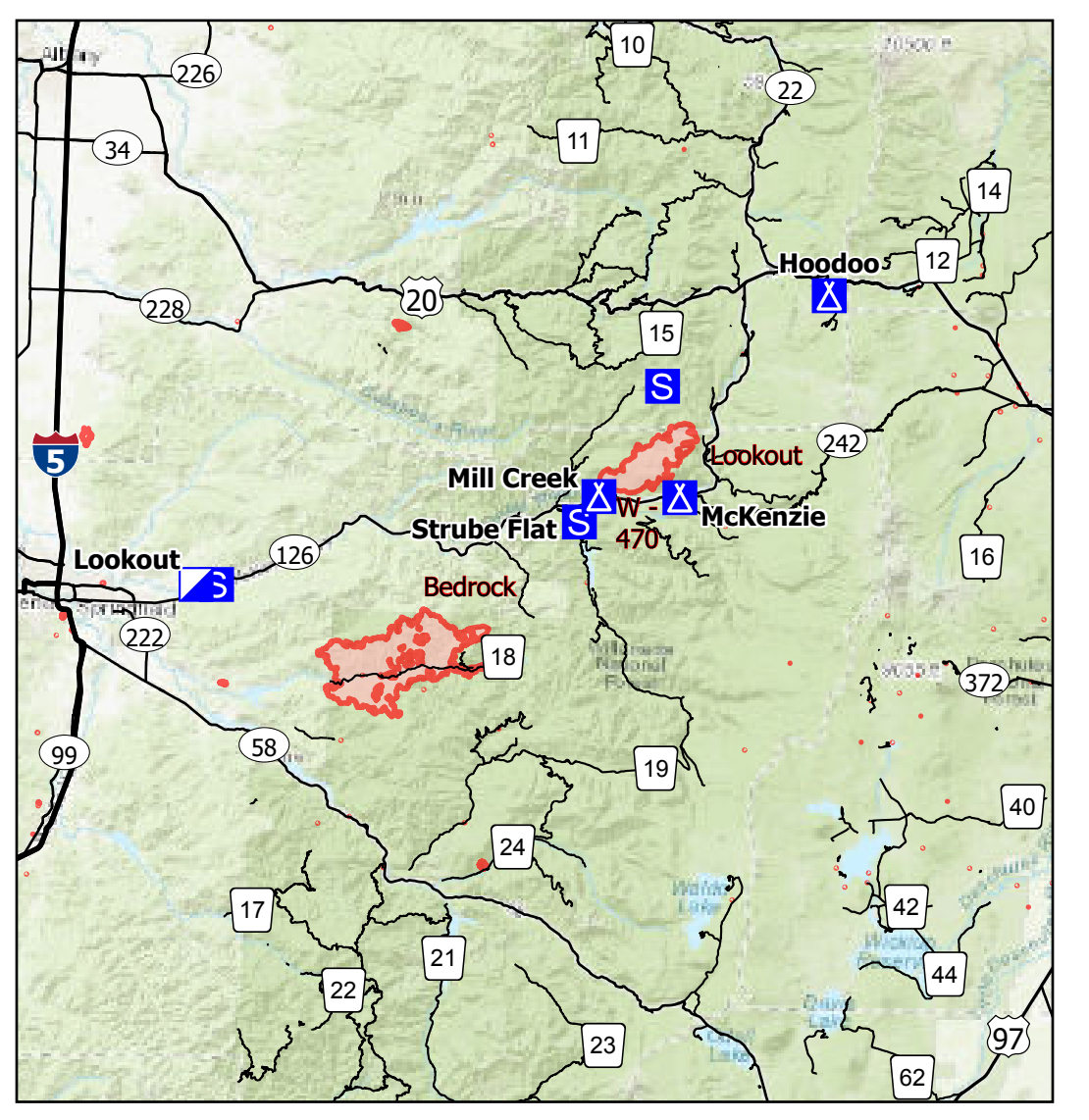
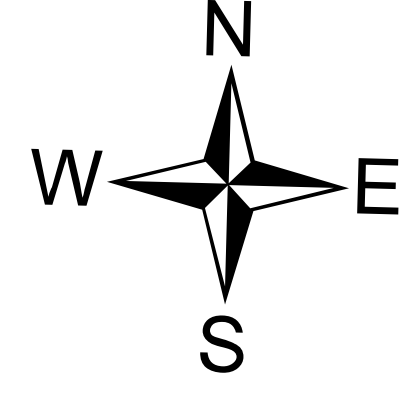
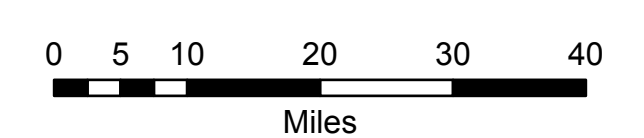
# Air Operations

## Lookout OR-WIF-230327 08/21/2023 24 Hour

11,174 acres at 08/20/2023 1000 PMT

- Airstrip or Airport
- Dip Site
- Mobile Retardant Base
- Helispot
- Sling Site
- Unimproved Landing Area
- Division Break
- Branch Break
- Drop Point
- Staging Area
- Value at Risk
- Repeater
- Safety Zone
- Temporary Flight Restriction
- Contained
- Uncontained
- Wildfire Daily Fire Perimeter
- State Highway and Route
- 3 - Suitable for Passenger Cars
- 2 - High Clearance Vehicles
- 1 - Basic Custodial Care (Closed)
- Aerial Fire Retardant Avoidance Areas: Terrestrial
- De-Energized Transmission Line
- Energized Transmission Line

FC Point Type	Label	Latitude WGS84 DDM	Longitude WGS84 DDM
Airstrip or Airport		44° 10.854' N	122° 05.425' W
Airstrip or Airport		44° 15.818' N	122° 00.474' W
Dip Site		44° 10.662' N	122° 12.504' W
Dip Site		44° 11.293' N	122° 15.982' W
Dip Site		44° 10.786' N	122° 07.730' W
Dip Site		44° 18.542' N	122° 02.760' W
Drop Point	10	44° 13.268' N	122° 13.799' W
Drop Point	101	44° 10.647' N	122° 13.895' W
Drop Point	102	44° 10.455' N	122° 14.398' W
Drop Point	103	44° 10.320' N	122° 17.856' W
Drop Point	104	44° 11.904' N	122° 14.288' W
Drop Point	105	44° 12.134' N	122° 14.417' W
Drop Point	106	44° 12.351' N	122° 13.859' W
Drop Point	107	44° 13.876' N	122° 13.859' W
Drop Point	110	44° 14.408' N	122° 03.553' W
Drop Point	111	44° 15.321' N	122° 03.460' W
Drop Point	112	44° 17.225' N	122° 02.313' W
Drop Point	113	44° 16.812' N	122° 03.802' W
Drop Point	114	44° 18.948' N	122° 05.125' W
Drop Point	115	44° 17.985' N	122° 06.597' W
Drop Point	12	44° 13.906' N	122° 10.982' W
Drop Point	13	44° 15.075' N	122° 13.956' W
Drop Point	141	44° 12.448' N	122° 02.845' W
Drop Point	15	44° 16.395' N	122° 11.014' W
Drop Point	19	44° 12.224' N	122° 13.669' W
Drop Point	27	44° 10.537' N	122° 09.764' W
Drop Point	40	44° 13.870' N	122° 07.675' W
Drop Point	42	44° 12.546' N	122° 06.347' W
Drop Point	43	44° 13.092' N	122° 06.228' W
Drop Point	7	44° 12.935' N	122° 13.669' W
Drop Point	70	44° 12.224' N	122° 06.990' W
Drop Point	75	44° 11.547' N	122° 03.068' W
Drop Point	76	44° 11.555' N	122° 03.654' W
Drop Point	77	44° 11.443' N	122° 06.090' W
Drop Point	78	44° 11.262' N	122° 09.052' W
Drop Point	79	44° 10.961' N	122° 08.820' W
Drop Point	81	44° 12.751' N	122° 12.321' W
Drop Point	85	44° 11.141' N	122° 12.803' W
Drop Point	87	44° 11.069' N	122° 10.516' W
Drop Point	89	44° 10.713' N	122° 11.188' W
Drop Point	9	44° 12.238' N	122° 15.680' W
Drop Point	94	44° 04.398' N	122° 47.498' W
Helispot	1	44° 10.926' N	122° 04.890' W
Helispot	40	44° 18.138' N	122° 07.607' W
Incident Command Post	Lookout	44° 04.064' N	122° 05.211' W
Mobile Retardant Base		44° 10.715' N	122° 13.065' W
Repeater	CMD1	44° 12.701' N	122° 06.088' W
Repeater	CMD2	44° 16.874' N	122° 08.629' W
Repeater	CMD3	44° 07.731' N	122° 07.208' W
Safety Zone		44° 10.758' N	122° 13.201' W
Safety Zone		44° 10.758' N	122° 13.201' W
Sling Site		44° 16.877' N	122° 08.616' W
Staging Area		44° 04.108' N	122° 48.315' W
Staging Area	Strube Flat	44° 09.030' N	122° 14.942' W
Unimproved Landing Area		44° 12.326' N	122° 07.712' W
Unimproved Landing Area		44° 16.628' N	122° 07.924' W
Unimproved Landing Area		44° 15.055' N	122° 12.139' W
Unimproved Landing Area		44° 17.252' N	122° 10.235' W
Unimproved Landing Area		44° 14.817' N	122° 13.296' W
Unimproved Landing Area		44° 15.062' N	122° 12.324' W
Unimproved Landing Area		44° 10.030' N	122° 11.047' W
Unimproved Landing Area		44° 17.969' N	122° 08.327' W
Unimproved Landing Area		44° 17.969' N	122° 08.327' W
Unimproved Landing Area		44° 12.324' N	122° 02.697' W
Unimproved Landing Area		44° 13.158' N	122° 10.054' W
Value at Risk		44° 12.407' N	122° 07.155' W
Value at Risk		44° 14.592' N	122° 08.514' W
Value at Risk		44° 15.508' N	122° 08.310' W
Value at Risk		44° 16.868' N	122° 08.623' W
Value at Risk		44° 13.160' N	122° 14.609' W
Value at Risk		44° 12.726' N	122° 14.700' W
Value at Risk		44° 12.768' N	122° 15.322' W
Value at Risk		44° 12.439' N	122° 15.492' W
Value at Risk		44° 12.082' N	122° 15.508' W
Value at Risk		44° 12.082' N	122° 15.437' W
Value at Risk		44° 12.885' N	122° 14.919' W
Value at Risk		44° 13.013' N	122° 15.673' W
Value at Risk		44° 15.878' N	122° 10.517' W
Value at Risk		44° 15.972' N	122° 10.248' W
Value at Risk		44° 15.862' N	122° 10.943' W
Value at Risk		44° 15.996' N	122° 10.996' W
Value at Risk		44° 15.857' N	122° 10.430' W
Value at Risk		44° 15.770' N	122° 10.270' W
Value at Risk		44° 15.541' N	122° 09.953' W
Value at Risk		44° 16.310' N	122° 08.937' W
Value at Risk		44° 16.432' N	122° 08.938' W
Value at Risk		44° 17.699' N	122° 02.443' W
Value at Risk		44° 17.227' N	122° 02.311' W
Value at Risk		44° 17.158' N	122° 02.480' W
Value at Risk		44° 13.155' N	122° 14.902' W
Value at Risk		44° 18.430' N	122° 02.907' W
Value at Risk		44° 18.479' N	122° 02.822' W
Value at Risk		44° 16.827' N	122° 02.907' W
Value at Risk		44° 22.294' N	121° 51.944' W
Value at Risk		44° 26.150' N	121° 56.495' W
Value at Risk		44° 24.293' N	121° 51.663' W
Value at Risk		44° 11.369' N	122° 04.329' W
Value at Risk		44° 22.463' N	121° 59.923' W
Value at Risk		44° 16.942' N	122° 02.719' W
Value at Risk		44° 16.839' N	122° 02.943' W
Value at Risk		44° 24.523' N	121° 52.256' W
Value at Risk		44° 16.831' N	122° 03.012' W
Value at Risk		44° 16.995' N	122° 02.651' W
Value at Risk		44° 25.308' N	121° 51.901' W
Value at Risk		44° 17.952' N	122° 02.879' W
Value at Risk		44° 17.899' N	122° 02.860' W
Value at Risk		44° 17.859' N	122° 02.843' W
Value at Risk		44° 17.806' N	122° 02.816' W
Value at Risk		44° 17.748' N	122° 02.795' W
Value at Risk		44° 11.363' N	122° 04.354' W
Value at Risk		44° 12.981' N	122° 03.508' W
Value at Risk		44° 14.071' N	121° 59.918' W
Value at Risk		44° 15.450' N	122° 02.417' W
Value at Risk		44° 16.144' N	122° 03.038' W
Value at Risk		44° 17.423' N	122° 02.143' W
Value at Risk		44° 20.503' N	122° 00.048' W
Value at Risk		44° 16.097' N	122° 02.998' W
Value at Risk		44° 16.121' N	122° 03.022' W
Value at Risk		44° 20.664' N	121° 59.975' W
Value at Risk		44° 16.253' N	122° 03.090' W
Value at Risk		44° 15.418' N	122° 02.418' W
Value at Risk		44° 15.029' N	122° 02.415' W



NW Team 6  
8/20/2023 2:30P  
Acres from IR and GPS  
North American 1983 Datum, Lat,Long Grid

