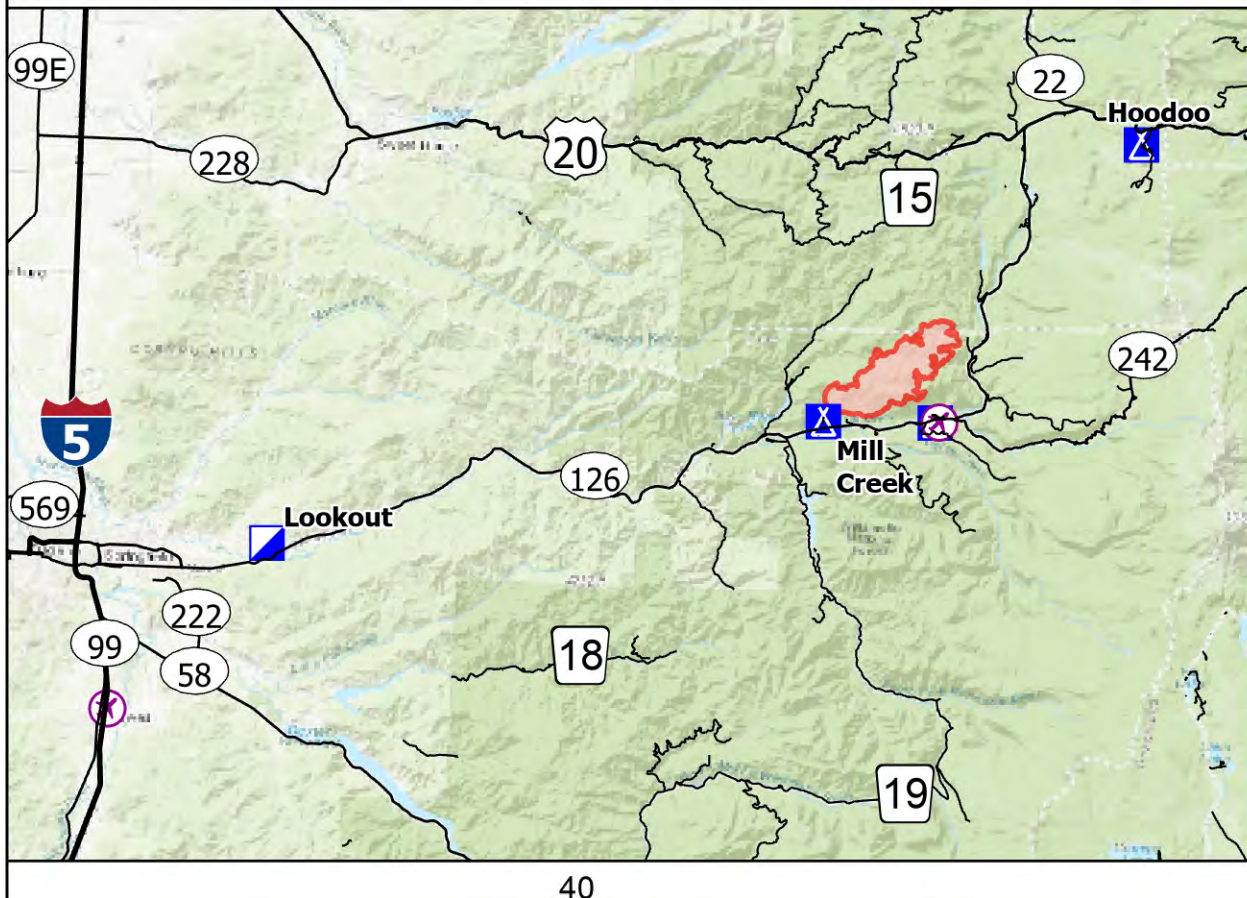
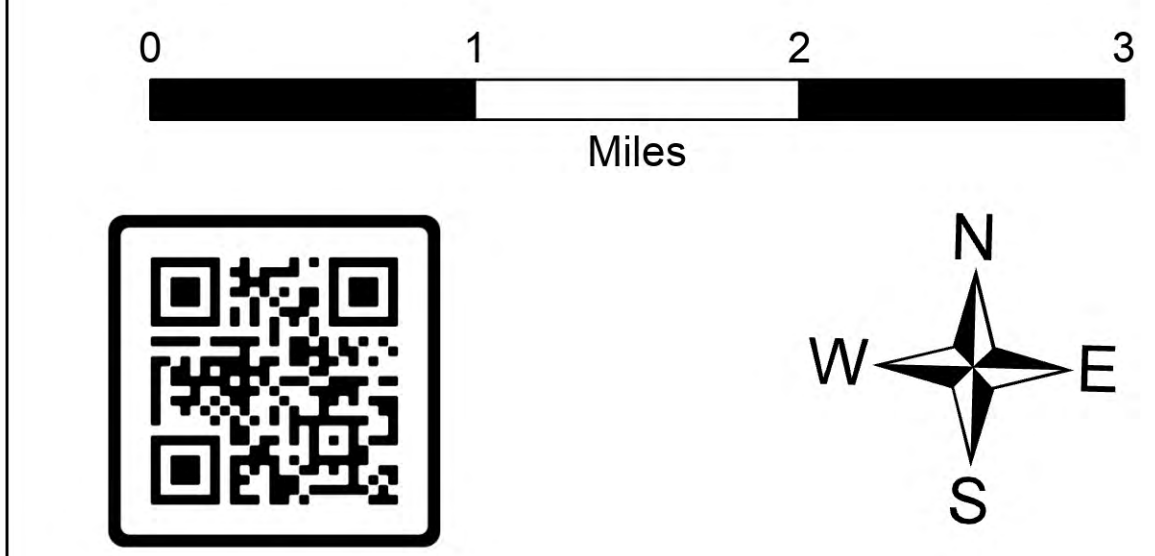


# Briefing

Lookout  
OR-WIF-230327  
08/21/2023 24 Hour

11,174 acres at 08/20/2023 1000 PMT

- Wildfire Daily Fire Perimeter
- Hellsport
- Division Break
- Branch Break
- Drop Point
- Camp
- Staging Area
- Hot Spot - Spot Fire
- Temporary Flight Restriction
- Contained
- Uncountained
- State Highway and Route
- Forest Service Road
- 3 - SUITABLE FOR PASSENGER CARS
- 2 - HIGH CLEARANCE VEHICLES
- 1 - BASIC CUSTODIAL CARE (CLOSED)
- other road
- Trail
- National Designated Trail
- Wild And Scenic River
- Recreational
- EXPERIMENTAL FOREST
- Wilderness\_r06
- Ranger District
- National Forest
- U.S. Forest Service
- Other Federal Land
- NHDAreaUSGS\_1
- NHDWaterbody
- Stream Intermittent
- Stream Perennial
- Stream
- Transmission\_Lines
- Energized Transmission Line
- De-Energized Transmission Line
- CAMPGROUND
- PICNIC SITE
- TRAILHEAD
- RANGER DISTRICT OFFICE
- Campground
- Group Campground
- Trailhead
- Picnic Site
- Boating Site
- Interpretive Site
- Snowpark
- Campground
- Activity Pass
- Facility
- Forest Service
- Cemetery
- School (K - 12)
- School (K - 12)
- Post Office
- Post Office
- Fire Station / EMS Station
- Transmission\_Lines
- Gap; Summit
- Gap; Summit
- Pillar; Crater
- CountyCENSUS\_1



8/20/2023 2307  
Acres from IR and GPS  
North American 1983 Datum, Lat/Long  
Gnd

