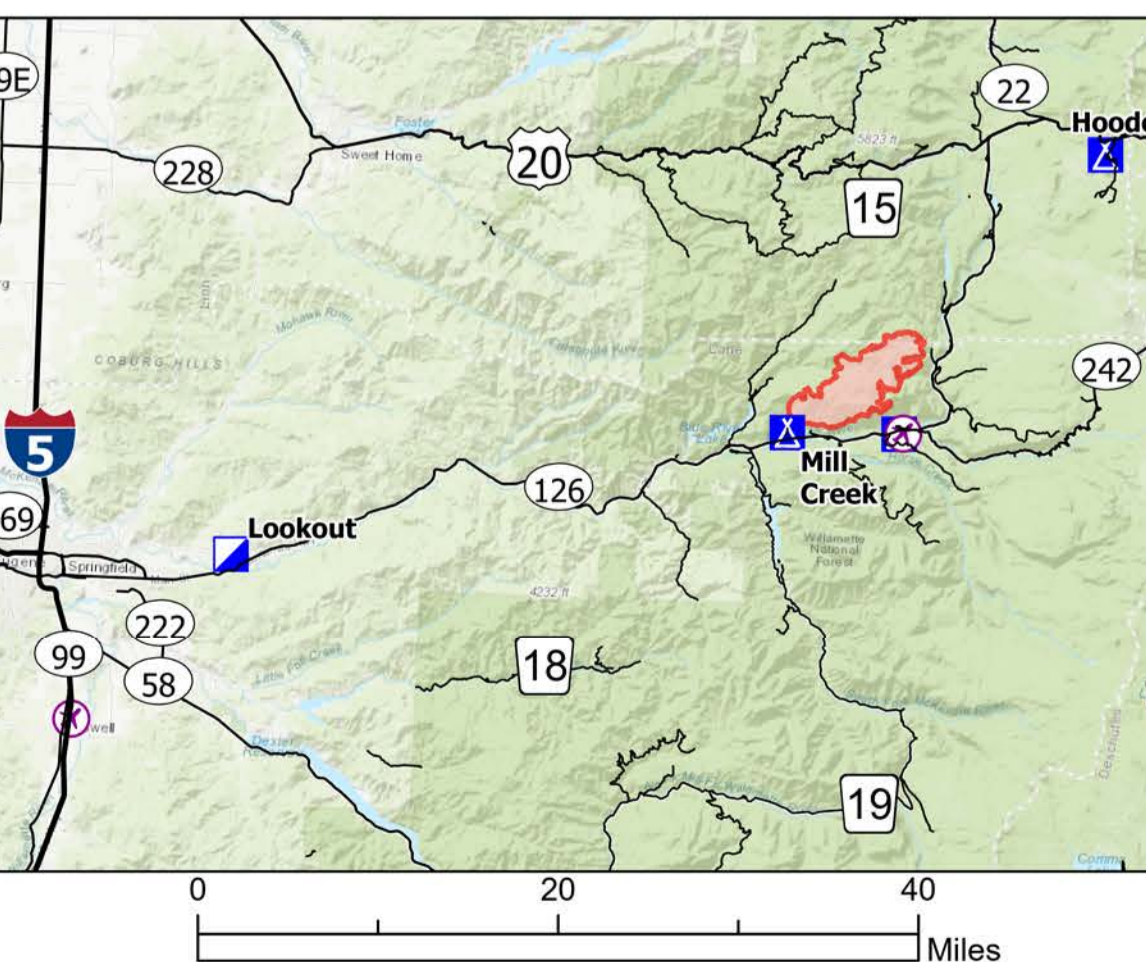
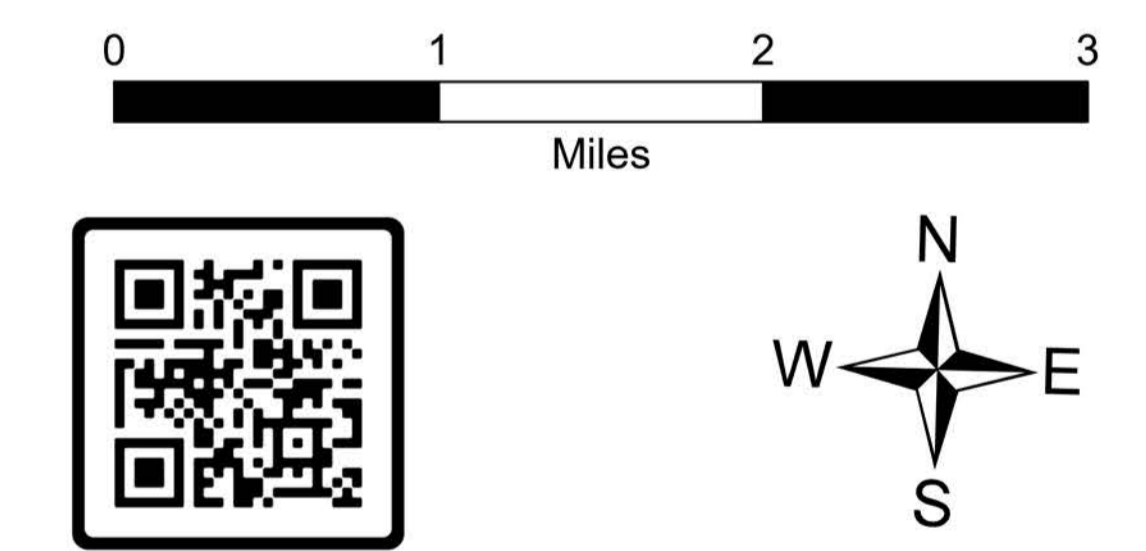
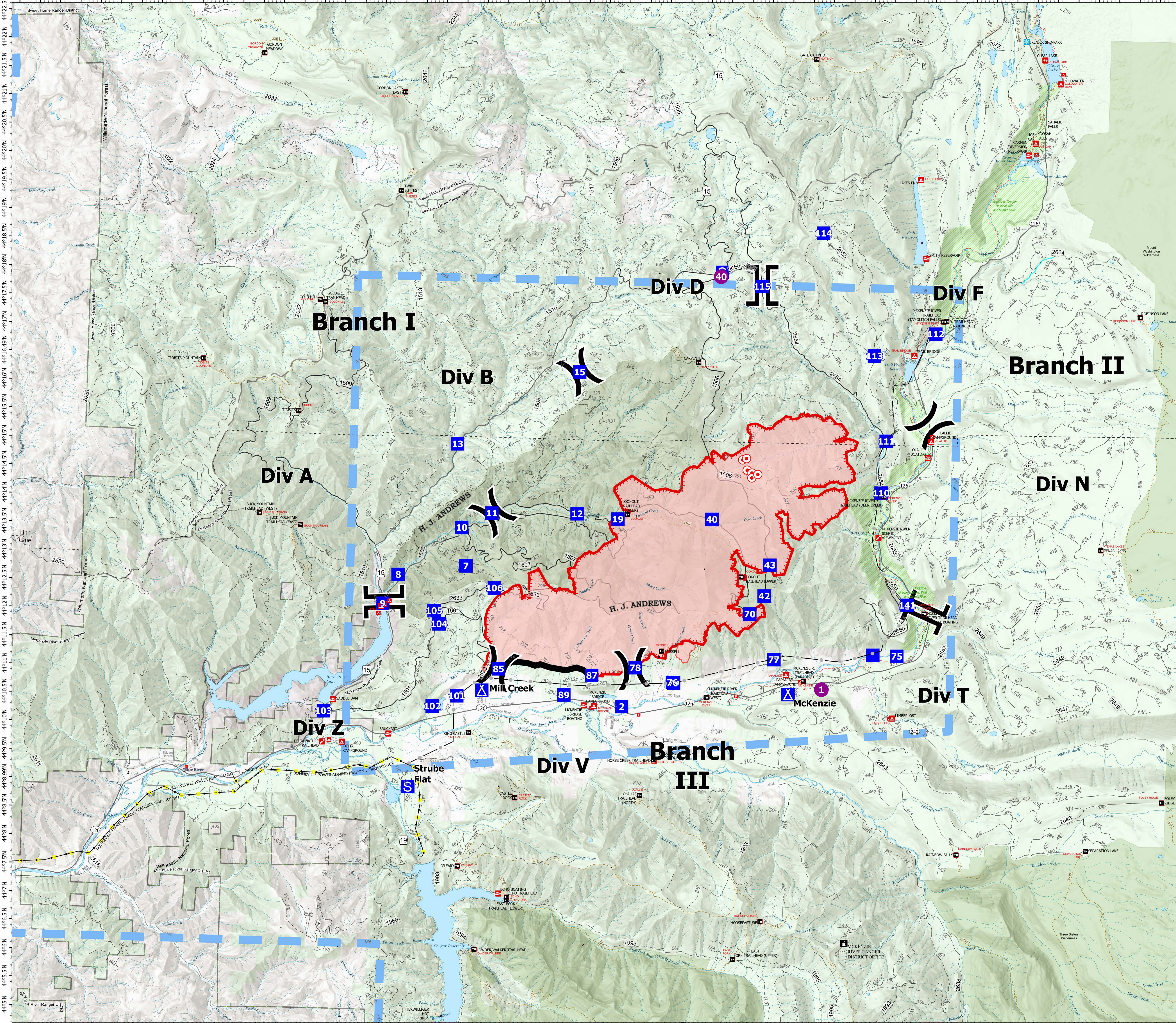


Briefing

Lookout
OR-WIF-230327
08/21/2023 24 Hour
12,188 acres at 08/21/2023 1630

- Wildfire Daily Fire Perimeter
- Hellspot
- Division Break
- Branch Break
- Drop Point
- Camp
- Staging Area
- Temporary Flight Restriction
- Contained
- Uncontained
- State Highway and Route
- Forest Service Road
- 3 - SUITABLE FOR PASSENGER CARS
- 2 - HIGH CLEARANCE VEHICLES
- 1 - BASIC CUSTODIAL CARE (CLOSED)
- other road
- City
- Trail
- National Designated Trail
- Wild And Scenic River
- Recreational
- EXPERIMENTAL FOREST
- Wilderness_06
- Ranger District
- National Forest
- U.S. Forest Service
- Other Federal Land
- Other Land, Including Private
- NHDAreaUSGS_1
- NHDWaterbody
- Stream Intermittent
- Stream Perennial
- Stream
- Transmission_Lines
- Energized Transmission Line
- De-Energized Transmission Line
- CAMPGROUND
- PICNIC SITE
- TRAILHEAD
- RANGER DISTRICT OFFICE
- Campground
- Group Campground
- Trailhead
- Picnic Site
- Boating Site
- Interpretive Site
- Snowpark
- Campground
- Activity Pass
- Facility
- Cemetery
- School (K - 12)
- School (K - 12)
- Post Office
- Fire Station / EMS Station
- Transmission_Lines
- Gap; Summit
- Gap; Summit
- Pillar; Crater
- CountyCENSUS_1



8/21/2023 1651
Acres from IR and GPS
North American 1983 Datum, Lat/Long
Grid