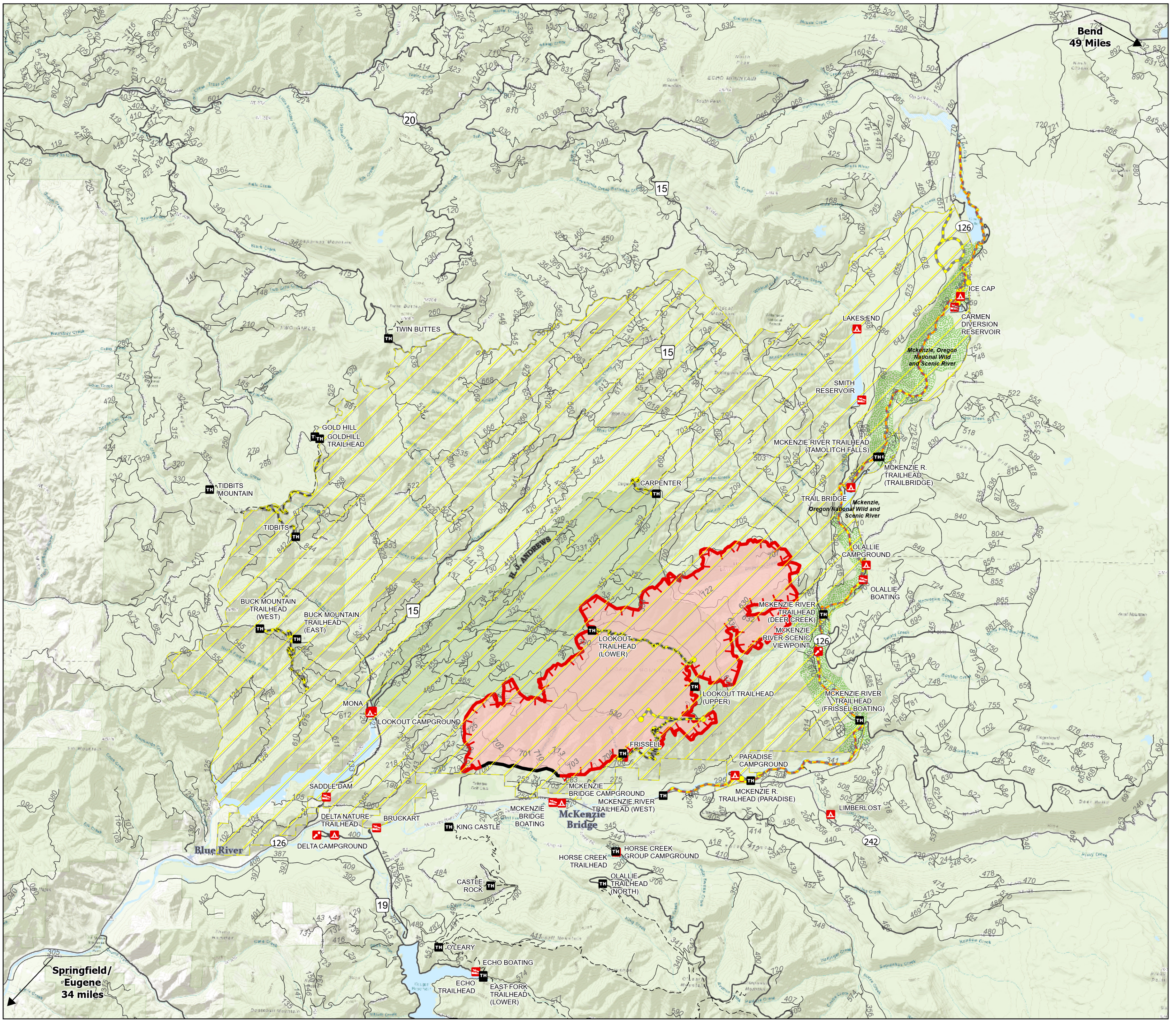
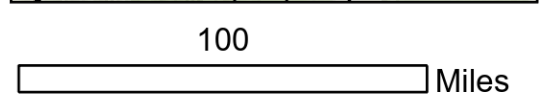
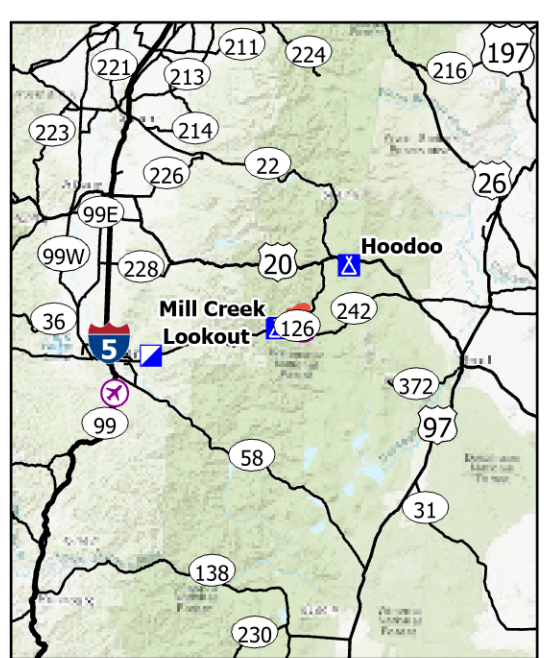
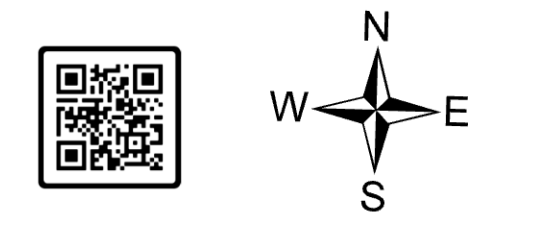


# Public Information

**Lookout**  
**OR-WIF-230327**  
**08/22/2023 24 Hour**

12,188 acres at  
08/21/2023 1630

- Wildfire Daily Fire Perimeter
- Closure - Area
- Closure - Site
- Closure - Road or Trail
- Campground
- Group Campground
- Trailhead
- Boating Site
- Interpretive Site
- Trail
- National Designated Trail
- Contained
- Uncontained
- City
- Wild And Scenic River
- Recreational
- H. J. Andrews Experimental Forest



Bend  
49 Miles

Springfield/  
Eugene  
34 miles