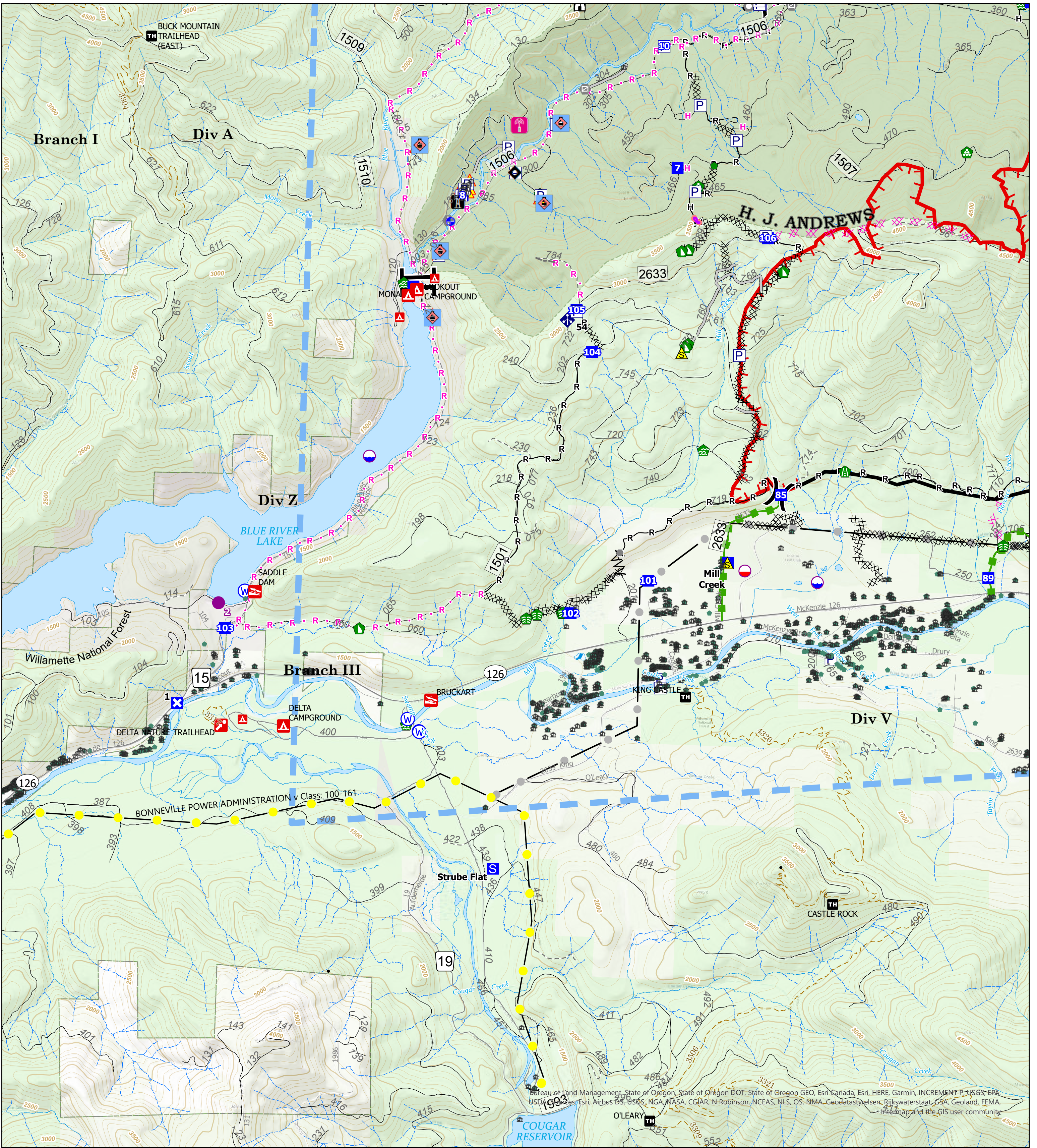


122°19'W 122°18'W 122°18'W 122°17'W 122°17'W 122°16'W 122°16'W 122°15'W 122°15'W 122°14'W 122°13'W 122°13'W 122°13'W 122°12'W 122°12'W 122°11'W

44°14'N 44°13'N 44°12'N 44°12'N 44°11'N 44°11'N 44°10'N 44°10'N 44°9'N 44°9'N 44°8'N 44°8'N 44°8'N 44°8'N



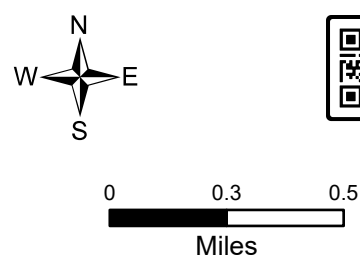
122°19'W 122°18'W 122°18'W 122°17'W 122°17'W 122°16'W 122°16'W 122°15'W 122°15'W 122°14'W 122°13'W 122°13'W 122°13'W 122°12'W 122°12'W 122°11'W

Lookout
OR-WIF-230327
08/23/2023 24 Hour
13,207 acres
at 08/22/2023 2100

Div Z
 Page 1 of 1

Division Tile

Pump	Camp	Mobile Weather Unit	Retardant Drop	Radio Towers	Boating Site
Dip Site	Staging Area	Safety Zone	Temporary Flight Restriction	FS Structures Service	Interpretive Site
Mobile Retardant Base	Value at Risk	Hazard	Contained	Addresses from County	Campground
Helispot	Gate	Water Source	Uncontained	Trail	Stream / River
Division Break	Water Development or Draft Site	Completed Dozer Line	Wx Tower	Experimental Forest	Lake / Pond
Branch Break	Stream Crossing	Completed Fuel Break	Rain Gauge	Ranger District	Lake / Pond (Intermittent)
Drop Point	Road Repair	Completed Hand Line	Guaging Station	U.S. Forest Service	Artificial Path
Closure	Repair Point	Planned Dozer Line	Guaging Station w/ Propane	Other Federal Land	Stream/River Intermittent
	Landing or Log Deck	Planned Hand Line		Other Land, Including Private	Energized Transmission Line
	Dozer Push	Planned Road as Line		Campground	De-Energized Transmission Line
		Access or Improved Road		Trailhead	
		Other			
		Escape Route			



NW Team 6
 8/22/2023 2147
 Acres from IR and GPS
 North American 1983 Datum.
 LatLong Grid