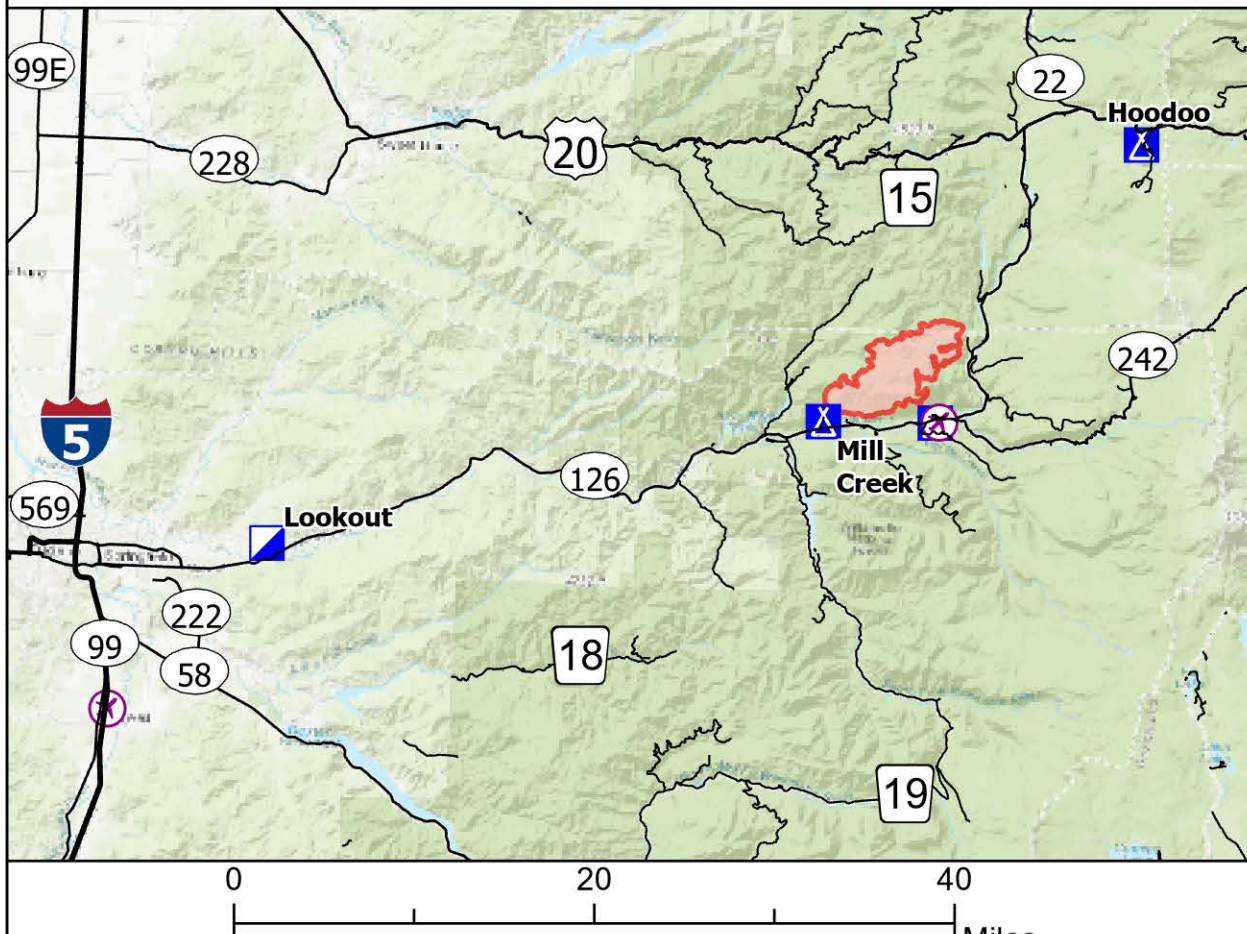
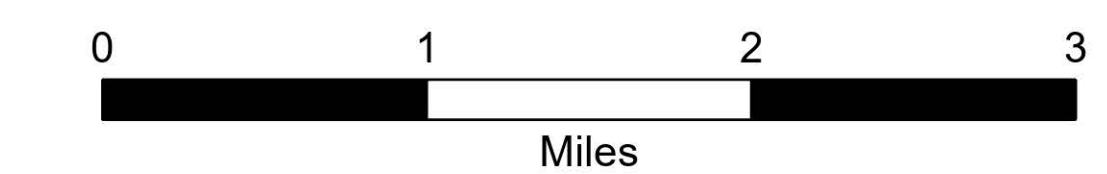


Briefing

Lookout
OR-WIF-230327
08/23/2023 24 Hour
13,207 acres at 08/22/2023 2100

- Wildfire Daily Fire Perimeter
- Hellsport
- Division Break
- Branch Break
- Drop Point
- Closure
- Camp
- Staging Area
- Fire Origin
- Temporary Flight Restriction
- Contained
- Uncontained
- State Highway and Route
- Forest Service Road
- 3 - SUITABLE FOR PASSENGER CARS
- 2 - HIGH CLEARANCE VEHICLES
- 1 - BASIC CUSTODIAL CARE (CLOSED)
- other road
- City
- Toll
- National Designated Trail
- Wild And Scenic River
- Recreational
- EXPERIMENTAL FOREST
- Wilderness_r06
- Ranger District
- National Forest
- U.S. Forest Service
- Other Federal Land
- NHDAreaUSGS_1
- NHDWaterbody
- Stream Intermittent
- Stream Perennial
- Stream
- Transmission_Lines
- Energized Transmission Line
- De-Energized Transmission Line
- CAMPGROUND
- PICNIC SITE
- TRAILHEAD
- RANGER DISTRICT OFFICE
- Campground
- Group Campground
- Picnic Site
- Boating Site
- Interpretive Site
- Snowpark
- Campground
- Activity Pass
- Facility
- Post Office
- Fire Station / EMS Station
- Transmission_Lines
- Gap; Summit
- Gap; Summit
- Pillar; Crater
- CountyCENSUS_1
- Egress Routes Major Roads
- Egress Routes Forest Service Roads



8/22/2023 2138
Acres from IR and GPS
North American 1983 Datum, LatLong
Grid

