

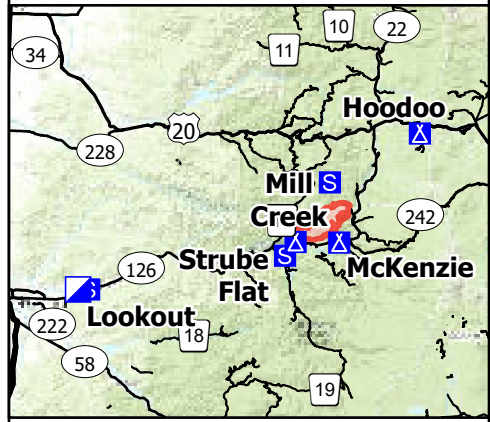
# Transportation

## Lookout OR-WIF-230327

08/23/2023 24 Hour

13,207 acres at  
08/22/2023 2100

- Closure - Area
- Closure - Site
- Closure - Road or Trail
- Wildfire Daily Fire Perimeter
- Airstrip or Airport
- Dip Site
- Mobile Retardant Base
- Helispot
- Sling Site
- Division Break
- Branch Break
- Drop Point
- Closure
- Camp
- Staging Area
- Lookout
- Fire Origin
- Value at Risk
- Other
- Landmark
- Gate
- Bridge
- Water Development or Draft Site
- Stream Crossing
- Road Repair
- Repair Point
- Landing or Log Deck
- Hazard Tree
- Dozer Push
- Culvert
- Mobile Weather Unit
- Internet Access
- Repeater
- Safety Zone
- Hazard
- Water Source
- US Highway
- State Highway and Route
- 3 - Suitable for Passenger Cars
- 2 - High Clearance Vehicles
- 1 - Basic Custodial Care (Closed)
- other road
- Wild And Scenic River
- Recreational
- H. J. Andrews Experimental Forest
- Closure - Site
- Closure - Road or Trail



0 60 Miles  
NW Team 6  
8/22/2023 2152  
Acres from IR and GPS  
North American 1983 Datum. Lat/Long  
Grid

