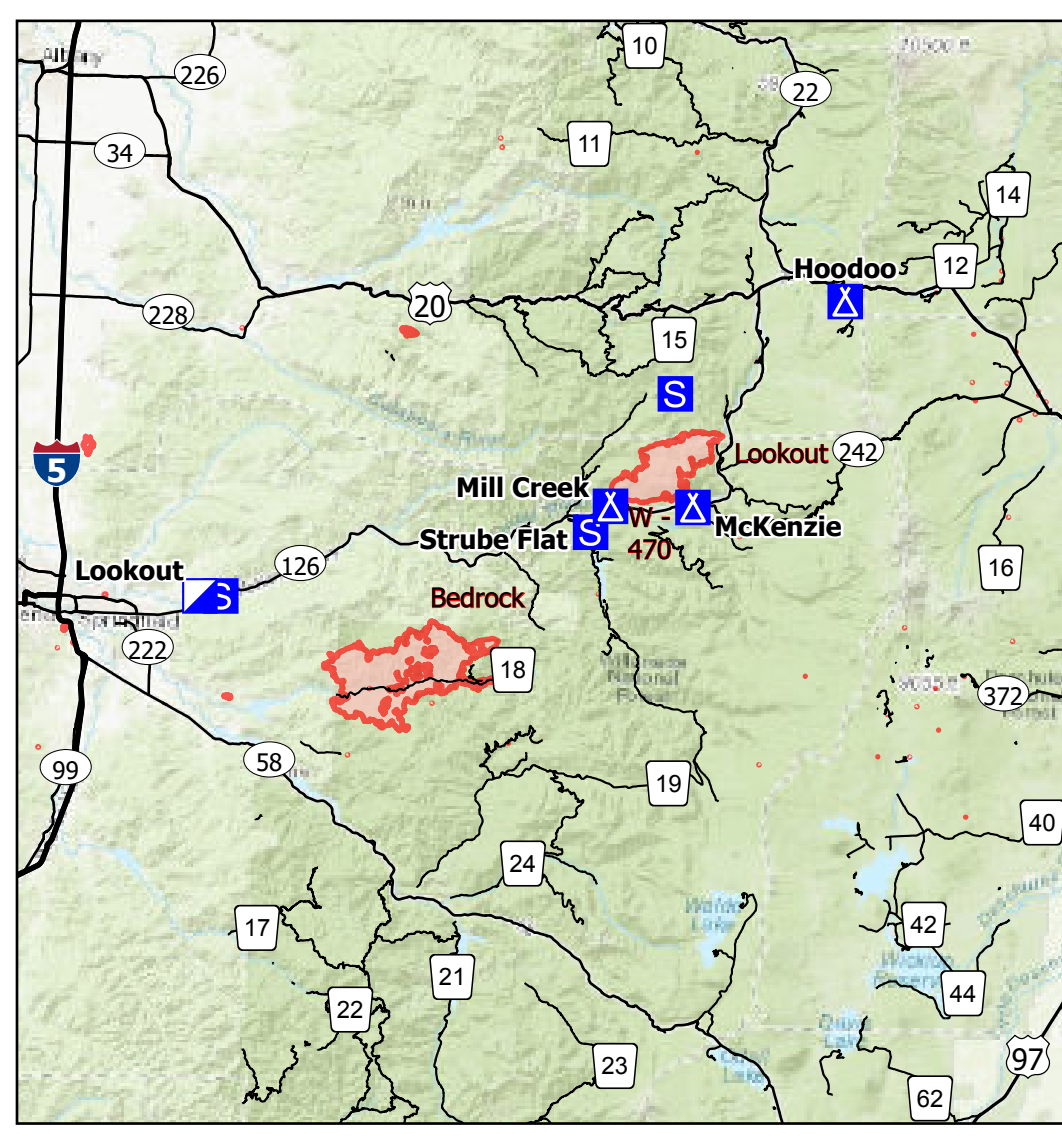
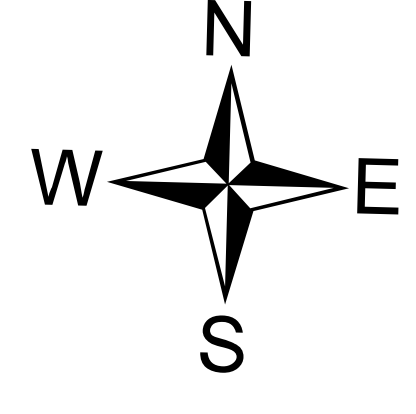
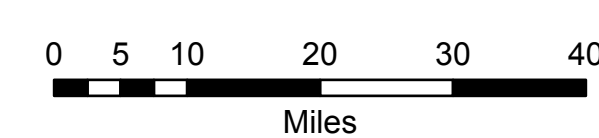


# Air Operations

**Lookout**  
**OR-WIF-230327**  
**08/24/2023 24 Hour**  
 14,286 acres at 08/23/2023 1100

FC Point Type	Label	Latitude WGS84 DDM	Longitude WGS84 DDM
Airstrip or Airport		44° 10.854' N	122° 05.425' W
Airstrip or Airport		44° 10.854' N	122° 05.425' W
Dip Site		44° 10.662' N	122° 12.504' W
Dip Site		44° 11.293' N	122° 15.982' W
Dip Site		44° 10.786' N	122° 07.730' W
Dip Site		44° 18.542' N	122° 02.760' W
Drop Point		44° 13.860' N	122° 04.994' W
Drop Point	10	44° 13.608' N	122° 13.789' W
Drop Point	101	44° 10.647' N	122° 13.860' W
Drop Point	102	44° 10.455' N	122° 14.398' W
Drop Point	103	44° 10.320' N	122° 17.056' W
Drop Point	104	44° 11.904' N	122° 14.288' W
Drop Point	105	44° 12.447' N	122° 14.417' W
Drop Point	106	44° 12.561' N	122° 12.959' W
Drop Point	11	44° 13.876' N	122° 13.069' W
Drop Point	110	44° 14.408' N	122° 03.553' W
Drop Point	111	44° 15.321' N	122° 03.460' W
Drop Point	112	44° 17.225' N	122° 02.313' W
Drop Point	113	44° 16.802' N	122° 03.802' W
Drop Point	114	44° 18.948' N	122° 05.125' W
Drop Point	115	44° 17.985' N	122° 06.597' W
Drop Point	12	44° 13.906' N	122° 10.982' W
Drop Point	13	44° 15.075' N	122° 13.856' W
Drop Point	141	44° 12.448' N	122° 02.845' W
Drop Point	15	44° 16.301' N	122° 11.014' W
Drop Point	19	44° 13.831' N	122° 09.979' W
Drop Point	2	44° 10.537' N	122° 09.764' W
Drop Point	7	44° 12.935' N	122° 13.669' W
Drop Point	75	44° 11.547' N	122° 03.068' W
Drop Point	76	44° 11.555' N	122° 03.654' W
Drop Point	77	44° 11.448' N	122° 06.090' W
Drop Point	78	44° 11.262' N	122° 09.002' W
Drop Point	79	44° 10.961' N	122° 08.820' W
Drop Point	8	44° 12.751' N	122° 15.321' W
Drop Point	85	44° 11.141' N	122° 12.803' W
Drop Point	87	44° 11.069' N	122° 10.516' W
Drop Point	89	44° 12.731' N	122° 11.188' W
Drop Point	9	44° 12.238' N	122° 15.680' W
Helibase		44° 04.399' N	122° 47.498' W
Helispot	1	44° 10.926' N	122° 04.890' W
Helispot	2	44° 10.458' N	122° 17.112' W
Helispot	40	44° 18.138' N	122° 07.607' W
Incident Command Post		44° 06.064' N	122° 50.211' W
Mobile Retardant Base		44° 10.715' N	122° 13.865' W
Repeater	CMD1	44° 12.701' N	122° 06.088' W
Repeater	CMD2	44° 16.874' N	122° 08.629' W
Repeater	CMD3	44° 07.735' N	122° 07.008' W
Safety Zone		44° 10.758' N	122° 13.201' W
Safety Zone		44° 11.913' N	122° 13.586' W
Sling Site		44° 16.877' N	122° 08.616' W
Staging Area		44° 04.108' N	122° 48.315' W
Staging Area		44° 18.214' N	122° 07.576' W
Staging Area	Strube Flat	44° 09.030' N	122° 14.942' W
Unimproved Landing Area		44° 16.397' N	122° 01.120' W
Value at Risk		44° 13.158' N	122° 10.515' W
Value at Risk		44° 12.407' N	122° 07.155' W
Value at Risk		44° 14.592' N	122° 08.514' W
Value at Risk		44° 15.508' N	122° 08.310' W
Value at Risk		44° 16.868' N	122° 08.623' W
Value at Risk		44° 13.160' N	122° 14.609' W
Value at Risk		44° 12.276' N	122° 14.700' W
Value at Risk		44° 12.768' N	122° 15.322' W
Value at Risk		44° 12.439' N	122° 15.492' W
Value at Risk		44° 12.082' N	122° 15.508' W
Value at Risk		44° 12.609' N	122° 15.427' W
Value at Risk		44° 12.885' N	122° 14.919' W
Value at Risk		44° 13.013' N	122° 15.073' W
Value at Risk		44° 15.878' N	122° 10.517' W
Value at Risk		44° 15.972' N	122° 10.248' W
Value at Risk		44° 15.682' N	122° 10.843' W
Value at Risk		44° 15.996' N	122° 10.596' W
Value at Risk		44° 15.857' N	122° 10.430' W
Value at Risk		44° 15.770' N	122° 10.270' W
Value at Risk		44° 15.541' N	122° 09.953' W
Value at Risk		44° 16.310' N	122° 08.937' W
Value at Risk		44° 16.432' N	122° 08.838' W
Value at Risk		44° 17.699' N	122° 02.443' W
Value at Risk		44° 17.227' N	122° 02.313' W
Value at Risk		44° 17.158' N	122° 02.480' W
Value at Risk		44° 13.155' N	122° 14.902' W
Value at Risk		44° 15.450' N	122° 02.417' W
Value at Risk		44° 15.418' N	122° 02.463' W
Value at Risk		44° 15.029' N	122° 02.415' W
Value at Risk		44° 16.148' N	122° 02.508' W
Value at Risk		44° 16.131' N	122° 03.022' W
Value at Risk		44° 16.097' N	122° 02.998' W
Value at Risk		44° 16.253' N	122° 03.090' W
Value at Risk		44° 17.423' N	122° 02.143' W
Value at Risk		44° 20.664' N	121° 59.975' W
Value at Risk		44° 20.503' N	122° 00.949' W
Value at Risk		44° 18.479' N	122° 02.622' W
Value at Risk		44° 18.430' N	122° 02.907' W
Value at Risk		44° 24.293' N	121° 51.663' W
Value at Risk		44° 22.294' N	121° 51.944' W
Value at Risk		44° 26.156' N	121° 56.495' W
Value at Risk		44° 11.369' N	122° 04.329' W
Value at Risk		44° 22.463' N	121° 59.923' W
Value at Risk		44° 24.523' N	121° 52.256' W
Value at Risk		44° 16.831' N	122° 03.012' W
Value at Risk		44° 16.839' N	122° 02.943' W
Value at Risk		44° 16.827' N	122° 02.907' W
Value at Risk		44° 16.942' N	122° 02.519' W
Value at Risk		44° 16.995' N	122° 02.651' W
Value at Risk		44° 25.306' N	121° 51.901' W
Value at Risk		44° 17.952' N	122° 02.879' W
Value at Risk		44° 17.899' N	122° 02.860' W
Value at Risk		44° 17.859' N	122° 02.843' W
Value at Risk		44° 20.503' N	122° 00.949' W
Value at Risk		44° 17.749' N	122° 02.795' W
Value at Risk		44° 11.363' N	122° 04.354' W
Value at Risk		44° 12.981' N	122° 03.508' W
Value at Risk		44° 13.002' N	122° 03.522' W
Value at Risk		44° 14.071' N	121° 59.918' W
Value at Risk		44° 16.768' N	122° 02.760' W
Value at Risk		44° 18.563' N	122° 02.592' W
Value at Risk		44° 09.772' N	121° 58.138' W
Value at Risk		44° 11.954' N	121° 54.537' W
Value at Risk		44° 16.771' N	122° 02.933' W
Value at Risk		44° 16.780' N	122° 02.957' W
Value at Risk		44° 12.251' N	122° 02.338' W
Value at Risk		44° 12.228' N	122° 02.550' W
Value at Risk		44° 16.363' N	122° 02.968' W
Value at Risk		44° 16.365' N	122° 03.026' W



NW Team 6  
 8/24/2023 0637  
 Acres from IR and GPS  
 North American 1983 Datum, Lat,Long Grid

