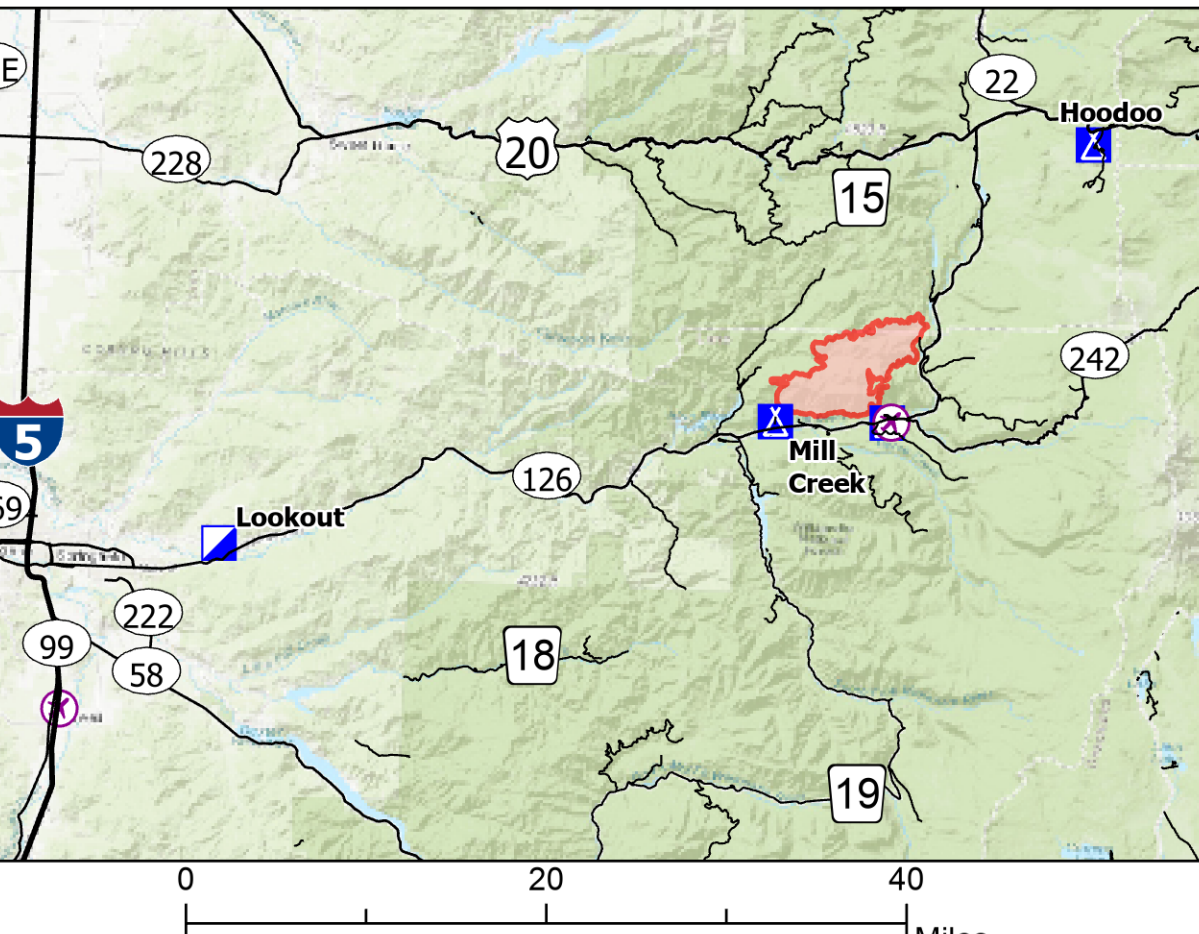
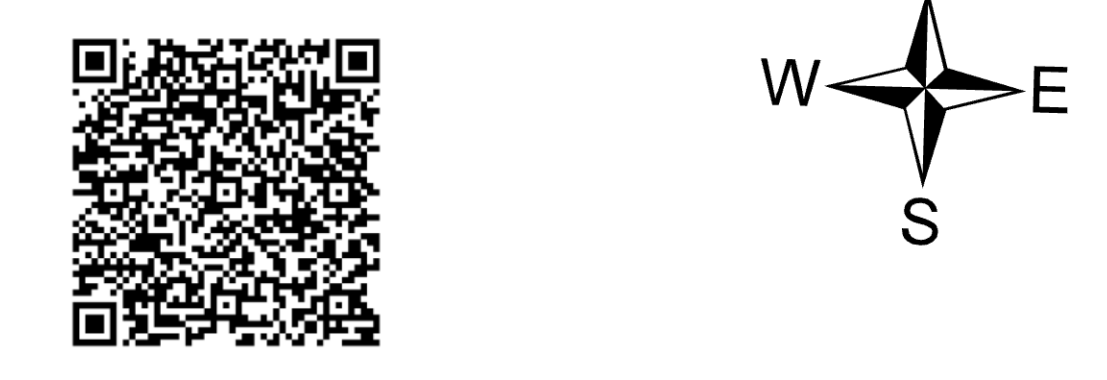
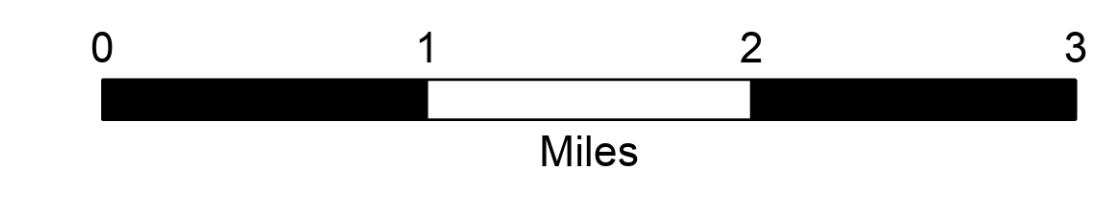


# Briefing

Lookout  
OR-WIF-230327  
08/25/2023 24 Hour

15,924 acres at 08/24/2023 1315

- Helispot
  - Division Break
  - Branch Break
  - Drop Point
  - Camp
  - Staging Area
  - Hot Spot - Spot Fire
  - Fire Origin
  - Temporary Flight Restriction
  - Contained
  - Uncontained
  - Wildfire Daily Fire Perimeter
  - US Highway
  - State Highway and Route
  - Forest Service Road
  - 3 - SUITABLE FOR PASSENGER CARS
  - 2 - HIGH CLEARANCE VEHICLES
  - 1 - BASIC CUSTODIAL CARE (CLOSED)
  - other road
  - City
  - Trail
- National Designated Trail
  - Wild And Scenic River
  - Recreational
  - EXPERIMENTAL FOREST
  - Wilderness\_06
  - National Forest
  - U.S. Forest Service
  - Other Federal Land
  - Other Land, Including Private
  - NHDAreasUSGS\_1
  - NHDWaterbody
  - Stream Intermittent
  - Stream Perennial
  - Stream
  - Energized Transmission Line
  - De-Energized Transmission Line
  - CAMPGROUND
  - PICNIC SITE
  - TRAILHEAD
  - HORSE CAMP
  - LOOKOUT/CABIN; WILDLIFE VIEWING SITE
  - Campground
  - Activity Pass
  - Facility
  - Forest Service
  - Cemetery
  - School (K - 12)
  - School (K - 12)
  - Road Office
  - Fire Station / EMS Station
  - Transmission Lines
  - Gap; Summit
  - Gap; Summit
  - Pillar; Crater
  - CountyCENSUS\_1
  - Egress Routes Forest Service Roads
  - Egress Routes Major Roads



8/24/2023 2137  
Acres from IR and GPS  
North American 1983 Datum. Lat,Long  
Grid

