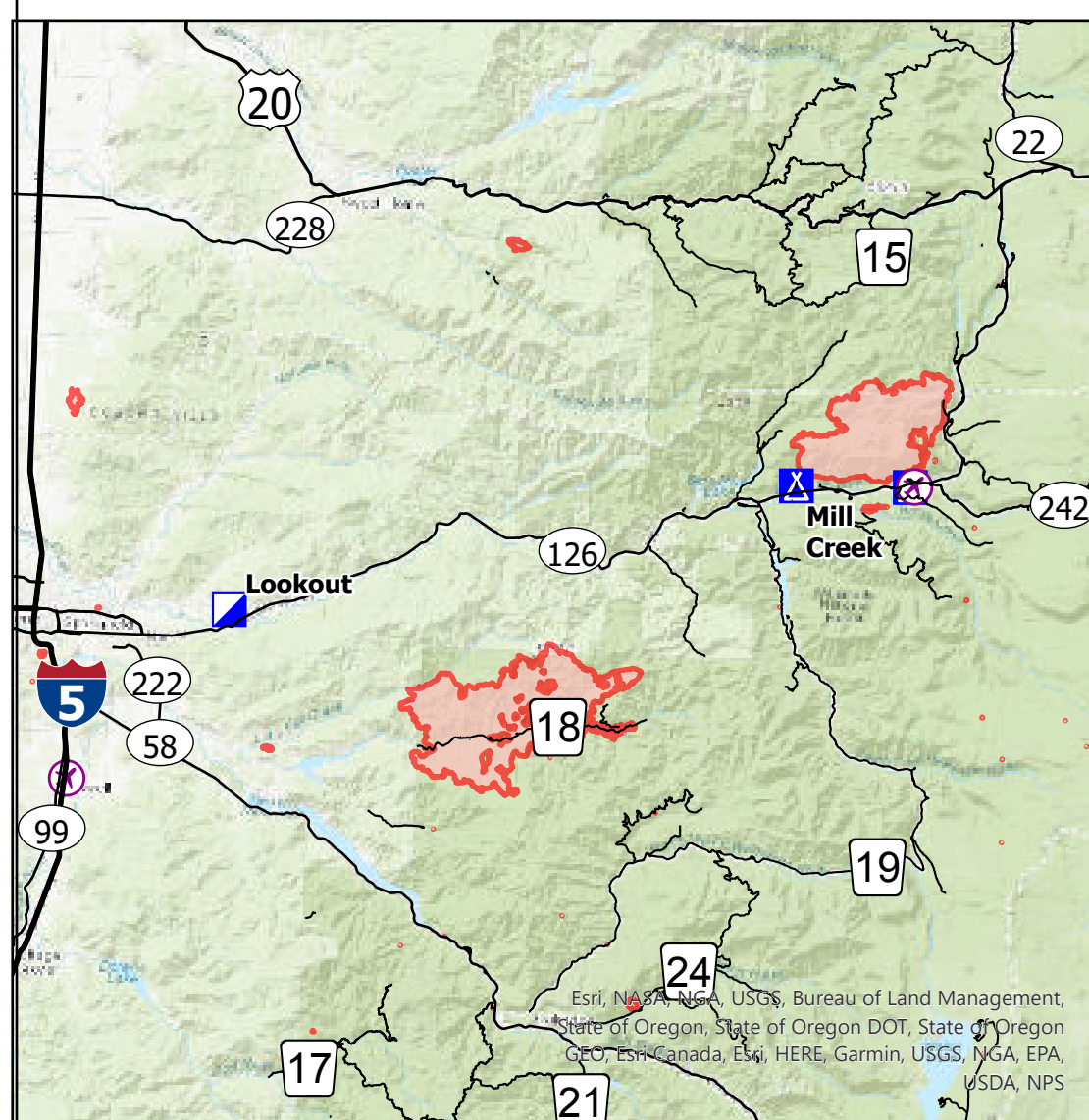
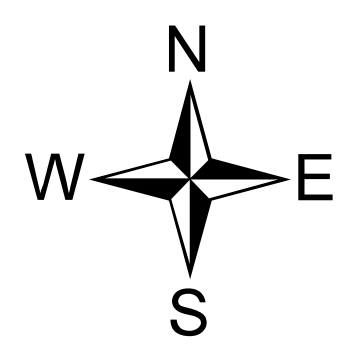
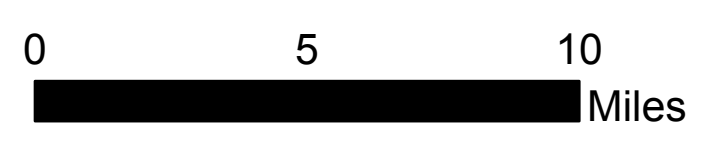


Medical Evacuation

Lookout
OR-WIF-230327
08/26/2023 24 Hour

19,979 acres at 08/26/2023 1230

- Wildfire Daily Fire Perimeter
- Estimated Ground Evacuation Time (Fine)
 - 1 to 2 Hours
 - 2 to 4 Hours
 - 4 to 6 Hours
 - More than 6 Hours
- Helispot
- Helibase
- Sling Site
- Incident Command Post
- Camp
- Staging Area
- Landmark
- Safety Zone
- Ranger District
- Interstate Highway
- US Highway
- State Highway and Route
- Counties



NW Team 6
8/26/2023 1333
Acres from IR and GPS
WGS 1984 Datum, Lat,Long Grid

