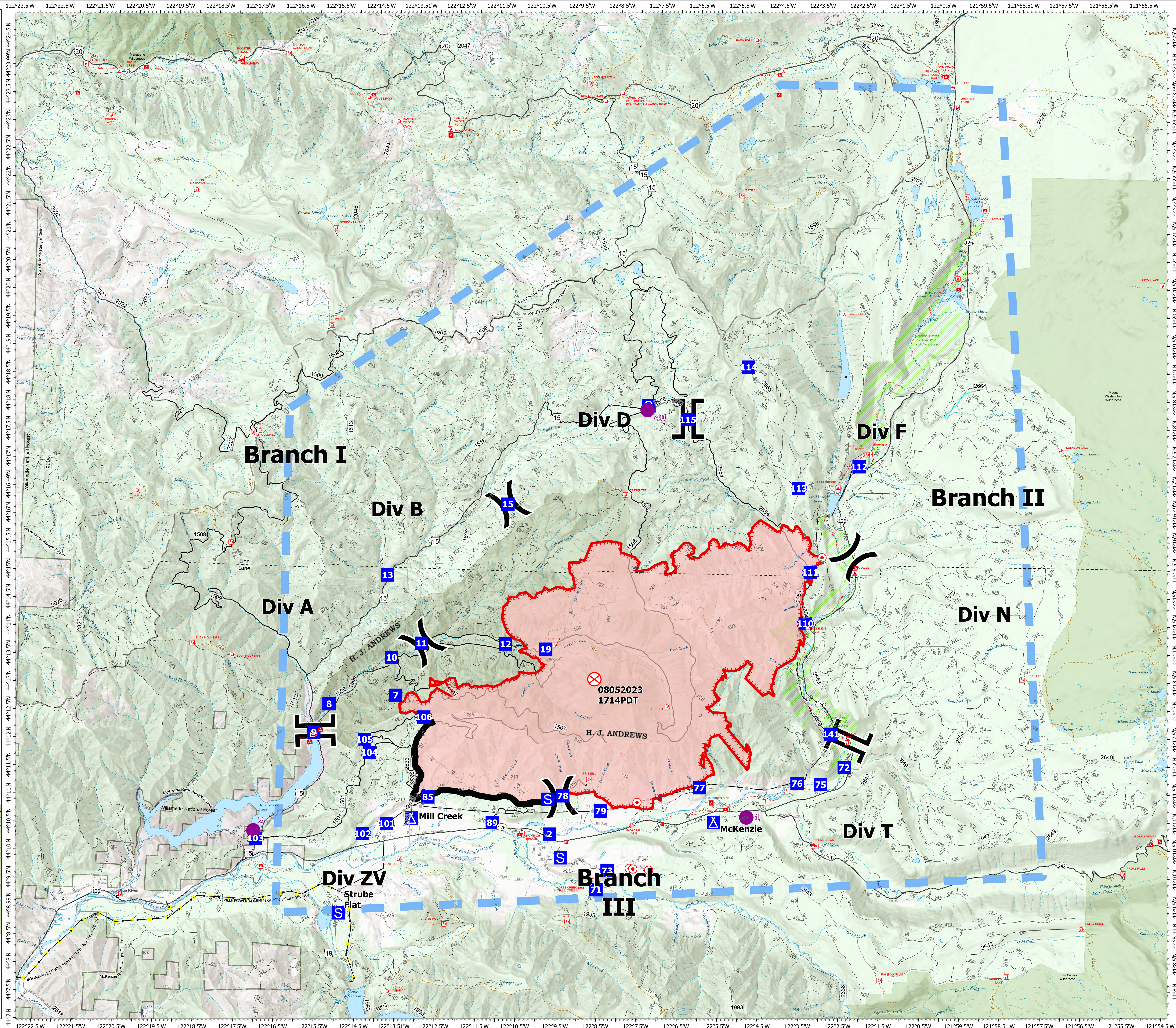
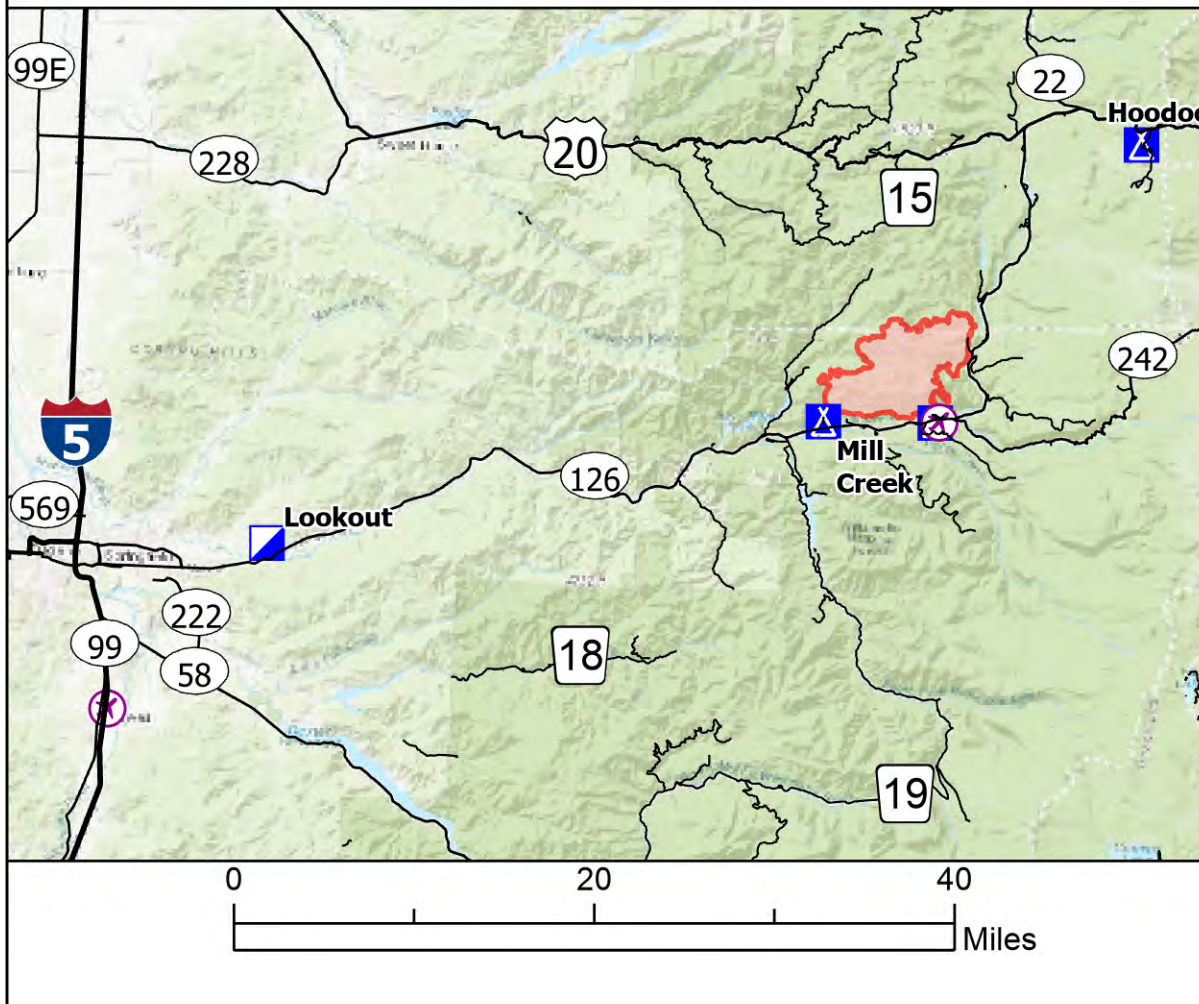
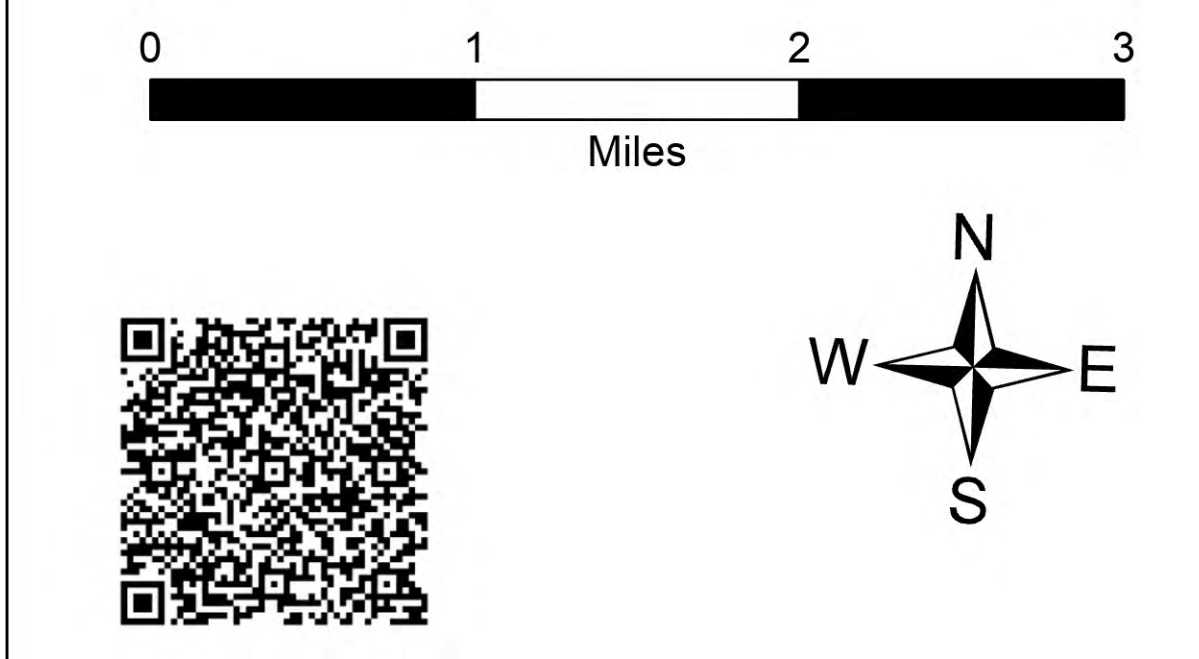


Briefing

Lookout
OR-WIF-230327
08/26/2023 24 Hour

18,888 acres at 08/25/2023 1430

- Hotspot
 - Division Break
 - Branch Break
 - Drop Point
 - Camp
 - Staging Area
 - Hot Spot - Spot Fire
 - Fire Origin
 - Temporary Flight Restriction
 - Contained
 - Uncontained
 - Wildfire Daily Fire Perimeter
 - US Highway
 - State Highway and Route
 - Forest Service Road
 - 3 - SUITABLE FOR PASSENGER CARS
 - 2 - HIGH CLEARANCE VEHICLES
 - 1 - BASIC CUSTODIAL CARE (CLOSED)
 - other road
 - City
 - Trail
- National Designated Trail
 - Wild And Scenic River
 - Recreational
 - EXPERIMENTAL FOREST
 - Wilderness_06
 - Ranger District
 - National Forest
 - U.S. Forest Service
 - Other Federal Land
 - Other Land, Including Private
 - NHDAreasUSGS_1
 - NHDWaterbody
 - Stream Intermittent
 - Stream Perennial
 - Stream
 - Energized Transmission Line
 - De-Energized Transmission Line
 - CAMPGROUND
 - PICNIC SITE
 - TRAILHEAD
 - HORSE CAMP
 - LOOKOUT/CABIN; WILDLIFE VIEWING SITE
 - Campground
 - Facility
 - Forest Service
 - Cemetery
 - School (K - 12)
 - Post Office
 - Fire Station / EMS Station
 - Transmission_Lines
 - Gap; Summit
 - 2 - HIGH CLEARANCE VEHICLES
 - Pillar; Crater
 - CountyCENSUS_1
 - Egress Routes Forest Service Roads
 - Egress Routes Major Roads



8/25/2023 2157
Acres from IR and GPS
North American 1983 Datum. Lat/Long
Gnd