

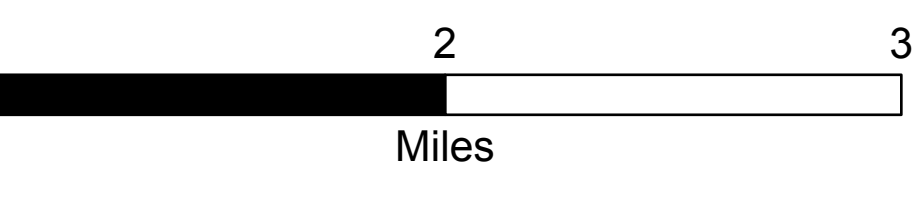
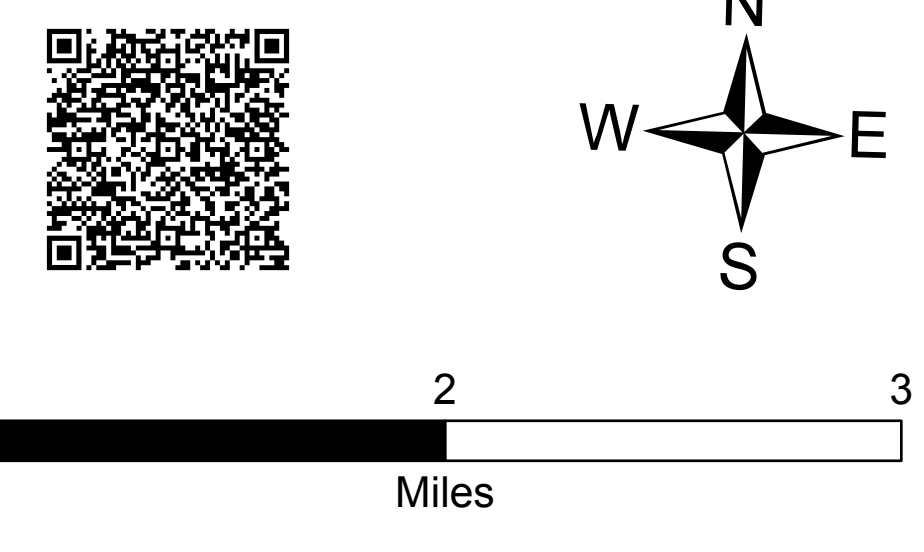
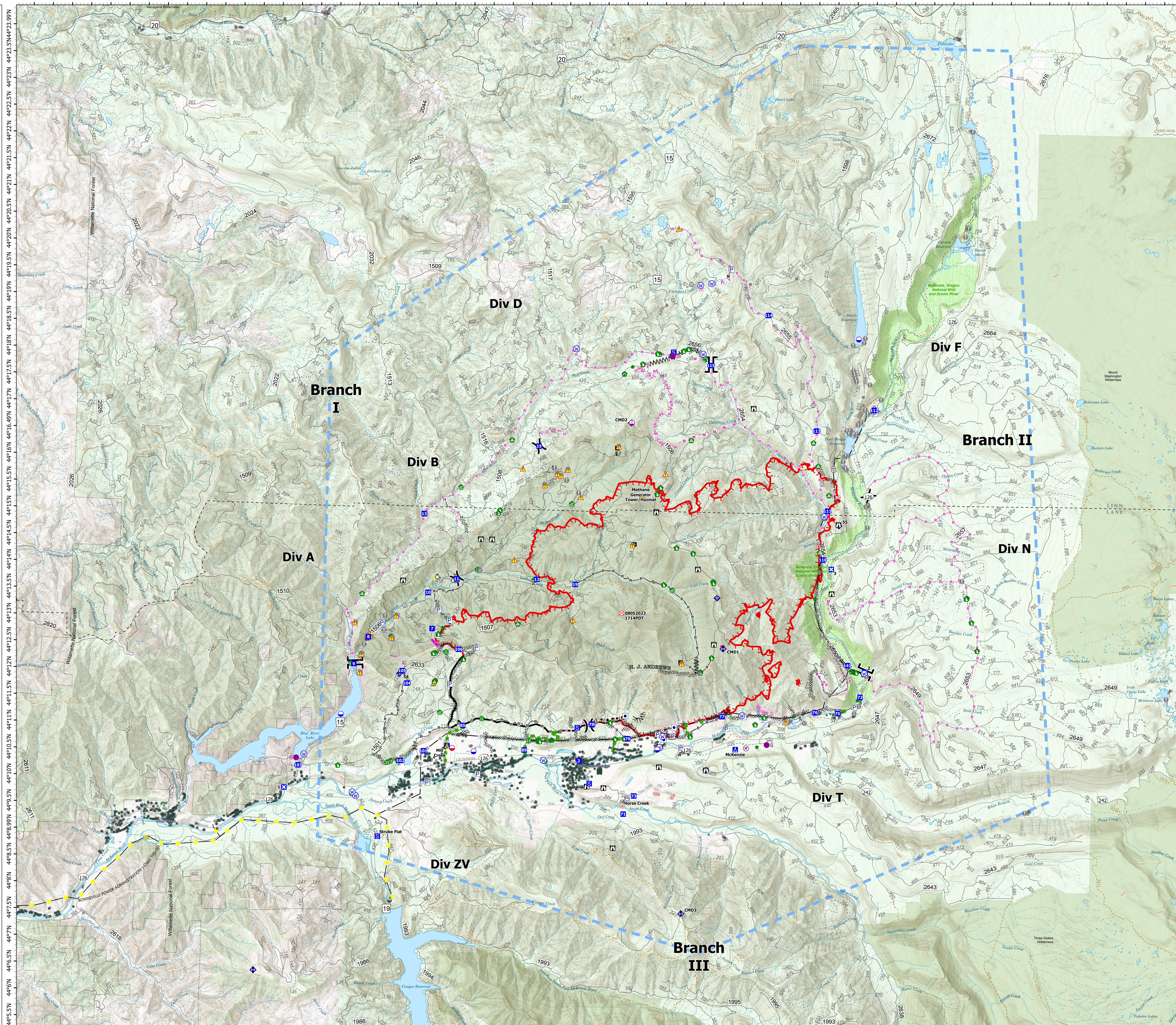
# Operations

## Lookout OR-WIF-230327

08/26/2023 24 Hour

19,979 acres at  
08/26/2023 1230

- Wildfire Daily Fire Perimeter
- Label Point
- Other Property
- Pump
- Water Tank
- Completed Burnout
- Completed Dozer Line
- Completed Fuel Break
- Completed Hand Line
- Completed Mixed Construction Line
- R - Completed Road as Line
- Planned Dozer Line
- Planned Fuel Break
- Planned Hand Line
- Planned Mixed Construction Line
- Planned Road as Line
- Highlighted Feature
- Other
- Escape Route
- Retardant Drop
- Temporary Flight Restriction
- Contained
- Uncontained
- US Highway
- State Highway and Route
- Forest Service Road
- Passenger Cars: 3, 4, 5
- High Clearance Vehicles: 2
- Basic Custodial Care: 1 (CLOSED)
- Other Road
- Trail
- National Designated Trail
- Wild And Scenic River
- Recreational
- EXPERIMENTAL FOREST
- Wilderness\_r06
- Ranger District
- National Forest
- U.S. Forest Service
- Other Federal Land
- Other Land, Including Private
- R05\_Structures\_Sync
- Addresses
- Wx Tower
- Wx w/ Propane
- Rain Gauge
- Gauging Station
- Gauging Station w/ Propane
- NEON Stream Gauge w/ Propane
- Radio Towers
- City
- Ranger District
- Recreational
- Wilderness\_r06
- EXPERIMENTAL FOREST
- National Forest
- U.S. Forest Service
- Other Federal Land
- Other Land, Including Private
- Value at Risk
- Other
- Landmark
- Gate
- Water Development or Draft Site
- Structure Wrap
- Stream Crossing
- Road Repair
- Repair Point
- Landing or Log Deck
- Dozer Push
- Culvert
- Clean Up Area
- Mobile Weather Unit
- Internet Access
- Repeater
- Safety Zone
- Hazard
- Water Source
- Energized Transmission Line
- De-Energized Transmission Line



NW Team 6  
8/26/2023 1334  
Acres from IR and GPS  
North American 1983 Datum, Lat/Long Grid