

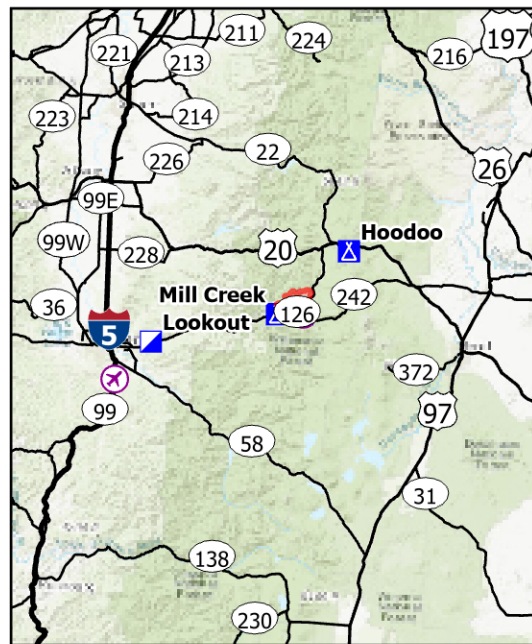
Public Information

Lookout
OR-WIF-230327
08/26/2023 24 Hour

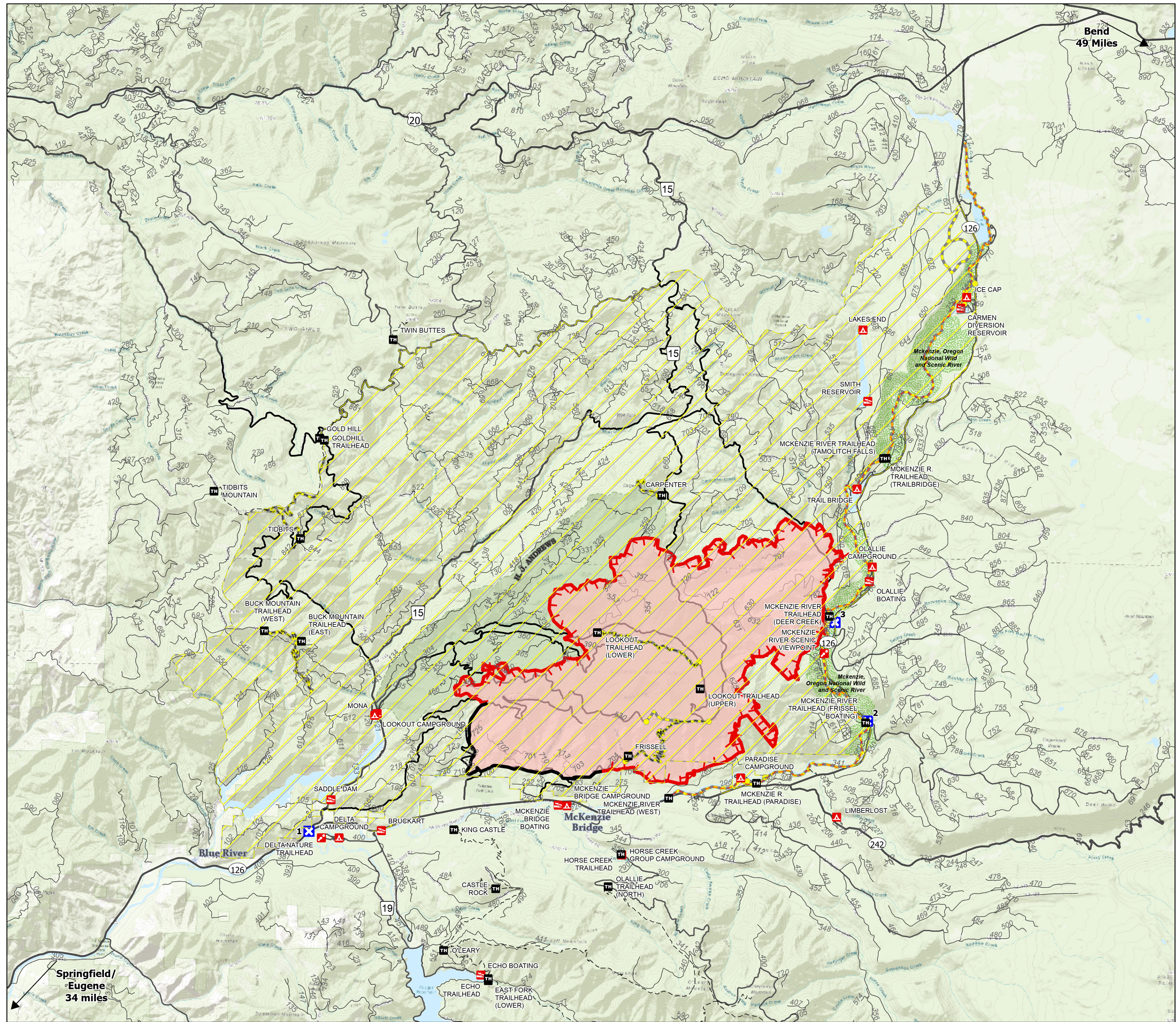
18,888 acres at
08/25/2023 1430

- Wildfire Daily Fire Perimeter
- Closure - Area
- Closure - Site
- Closure - Road or Trail
- Campground
- Group Campground
- Trailhead
- Boating Site
- Interpretive Site
- Trail
- National Designated Trail
- Closure
- Contained
- Uncontained
- City
- Wild And Scenic River
- Recreational
- H. J. Andrews Experimental Forest

0 0.5 1 2 3 Miles



100 Miles



Bend
49 Miles

Springfield/
Eugene
34 miles