

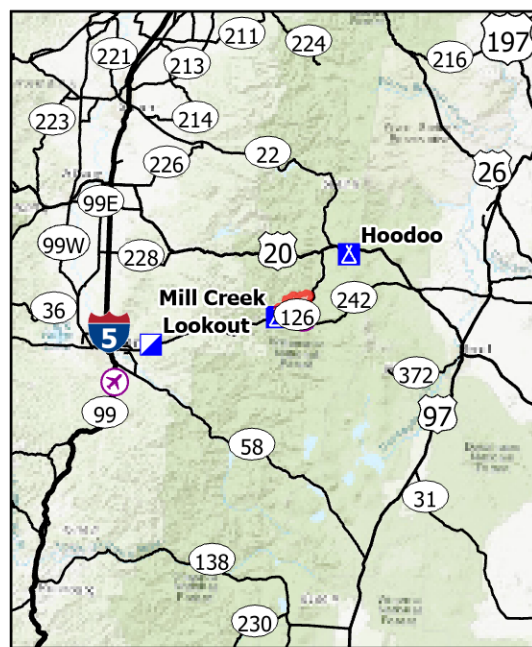
# Public Information

**Lookout**  
**OR-WIF-230327**  
**08/26/2023 24 Hour**

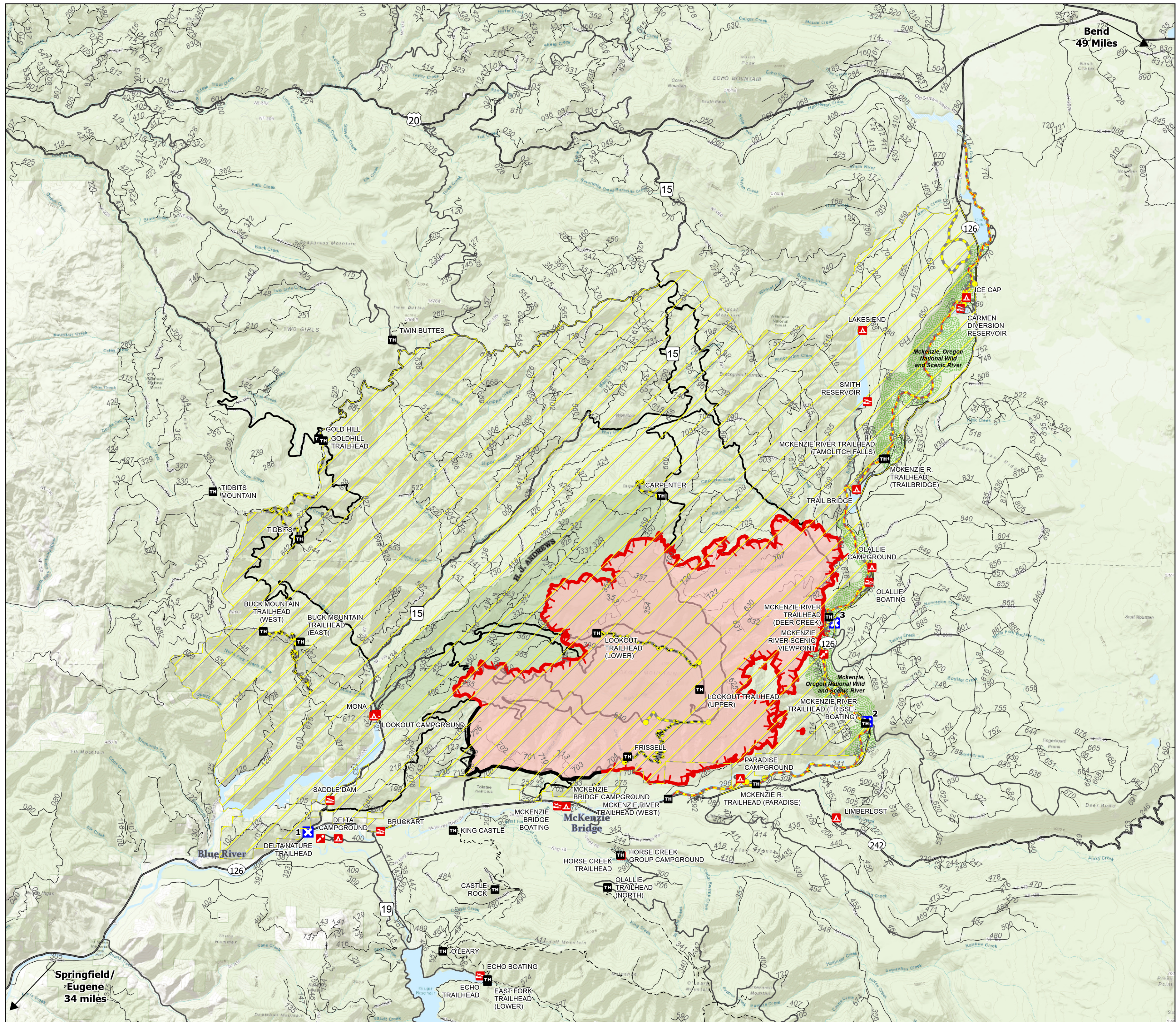
19,979 acres at  
08/26/2023 1230

- Wildfire Daily Fire Perimeter
- Closure - Area
- Closure - Site
- Closure - Road or Trail
- Campground
- Group Campground
- Trailhead
- Boating Site
- Interpretive Site
- Trail
- National Designated Trail
- Closure
- Contained
- Uncontained
- City
- Wild And Scenic River
- Recreational
- H. J. Andrews Experimental Forest

0 0.5 1 2 3 Miles



100 Miles



Bend  
49 Miles

Springfield/  
Eugene  
34 miles