

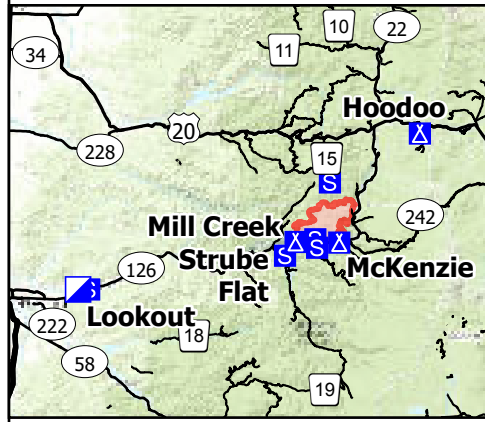
# Transportation

## Lookout OR-WIF-230327

08/26/2023 24 Hour

18,888 acres at  
08/25/2023 1430

- Closure - Area
- Closure - Site
- Closure - Road or Trail
- Wildfire Daily Fire Perimeter
- Airstrip or Airport
- Dip Site
- Mobile Retardant Base
- Helispot
- Sling Site
- Division Break
- Branch Break
- Drop Point
- Closure
- Camp
- Staging Area
- Lookout
- Hot Spot - Spot Fire
- Fire Origin
- Value at Risk
- Other
- Landmark
- Gate
- Bridge
- Water Development or Draft Site
- Structure Wrap
- Stream Crossing
- Road Repair
- Repair Point
- Landing or Log Deck
- Dozer Push
- Culvert
- Clean Up Area
- Mobile Weather Unit
- Internet Access
- Repeater
- Safety Zone
- Hazard
- Water Source
- US Highway
- State Highway and Route
- 3 - Suitable for Passenger Cars
- 2 - High Clearance Vehicles
- 1 - Basic Custodial Care (Closed)
- other road
- Closure - Site
- Closure - Road or Trail



0 1 2 3 Miles

Miles  
NW Team 6  
8/25/2023 2212  
Acres from IR and GPS  
North American 1983 Datum. Lat/Long  
Grid

