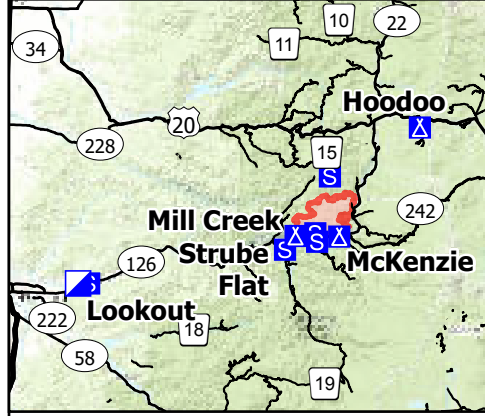


Transportation

Lookout
OR-WIF-230327
08/26/2023 24 Hour
19,979 acres at
08/26/2023 1230

- Closure - Site
- Closure - Road or Trail
- ▨ Closure - Area
- ▭ Wildfire Daily Fire Perimeter
- ⊗ Airstrip or Airport
- ⊙ Dip Site
- ⊙ Mobile Retardant Base
- ⊙ Helispot
- ⊙ Sling Site
- ⎓ Division Break
- ⎓ Branch Break
- Drop Point
- ⊗ Closure
- ⊗ Camp
- ⊗ Staging Area
- ⊗ Lookout
- ⊗ Hot Spot - Spot Fire
- ⊗ Fire Origin
- ⊗ Value at Risk
- ⊗ Other
- ⊗ Landmark
- ⊗ Gate
- ⊗ Bridge
- ⊗ Water Development or Draft Site
- ⊗ Structure Wrap
- ⊗ Stream Crossing
- ⊗ Road Repair
- ⊗ Repair Point
- ⊗ Landing or Log Deck
- ⊗ Dozer Push
- ⊗ Culvert
- ⊗ Clean Up Area
- ⊗ Mobile Weather Unit
- ⊗ Internet Access
- ⊗ Repeater
- ⊗ Safety Zone
- ⊗ Hazard
- ⊗ Water Source
- US Highway
- State Highway and Route
- 3 - Suitable for Passenger Cars
- 2 - High Clearance Vehicles
- 1 - Basic Custodial Care (Closed)
- other road



0 60 Miles
NW Team 6
8/26/2023 1337
Acres from IR and GPS
North American 1983 Datum. Lat/Long
Grid

