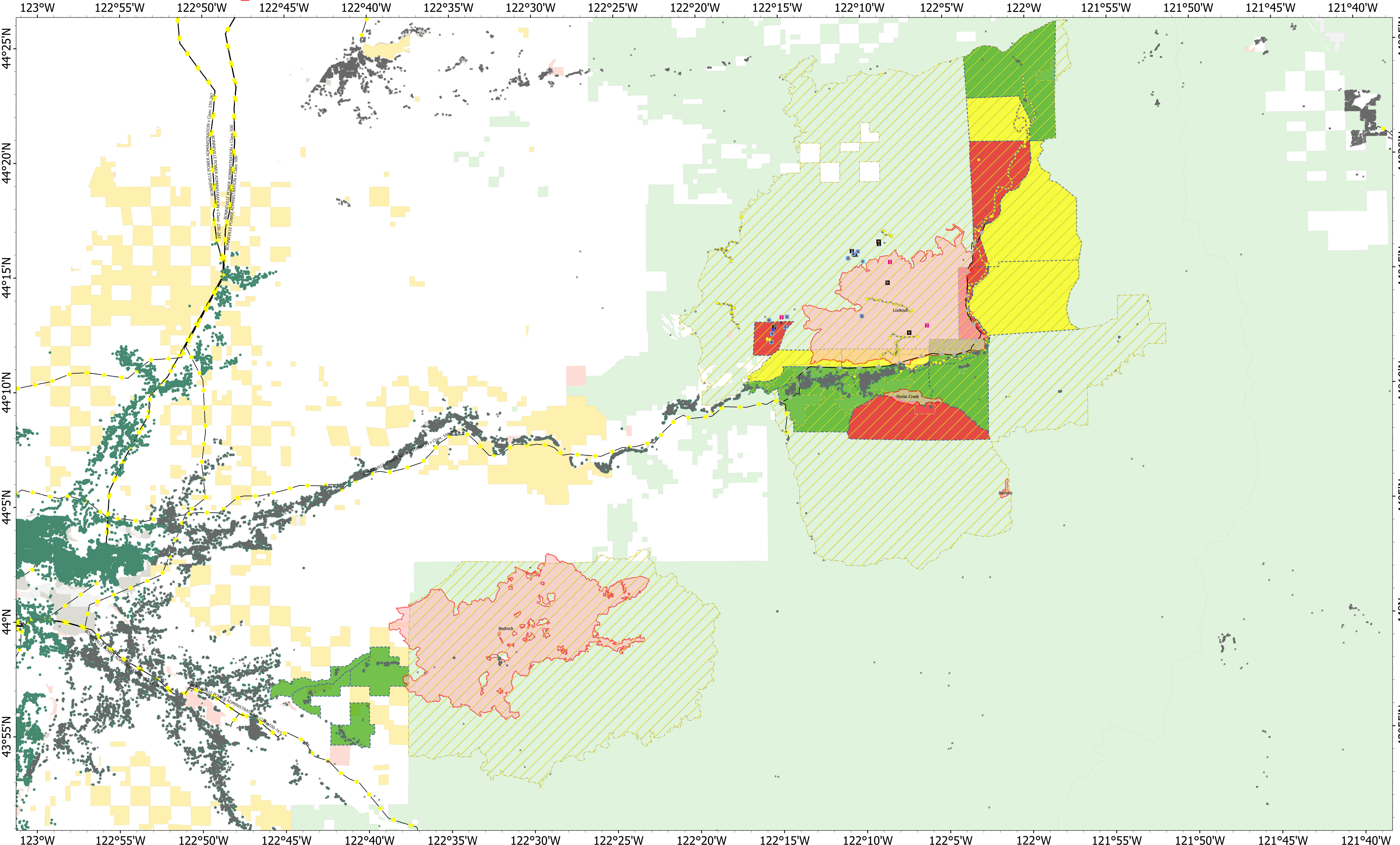


# Evac Map - Bedrock - Lookout - Horse Creek - Pothole



- Level 1: Be Ready
- Level 2: Be Set
- Level 3: Go
- Lookout Closure Road or Trail
- Lookout Closure Site
- Lookout Closure Area
- De-Energized Transmission Line
- Wildfire Daily Fire Perimeter

**Bedrock**  
ORWIF-230266  
09/05/2023

*31,590 acres at 9/2/2023 @ 2227  
Acres from IR & GPS*

**Lookout**  
ORWIF-230327  
09/05/2023

*24,581 acres at 9/2/2023 @ 2202  
Acres from IR & GPS*

**Horse Creek**  
ORWIF-230392  
09/05/2023

*765 acres at 9/2/2023 @ 2202  
Acres from IR & GPS*

**Pothole**  
ORWIF-230393  
09/05/2023

*109 acres at 9/2/2023 @ 2202  
Acres from IR & GPS*

9/4/2023 2300  
NAD 1983 UTM Zone 10N. LatLong Grid