

Operations
Div A

Operations

Lookout

ORWIF-230327

09/16/2023

24,692 acres at 9/14/2023 @ 1947
Acres from IR & GPS

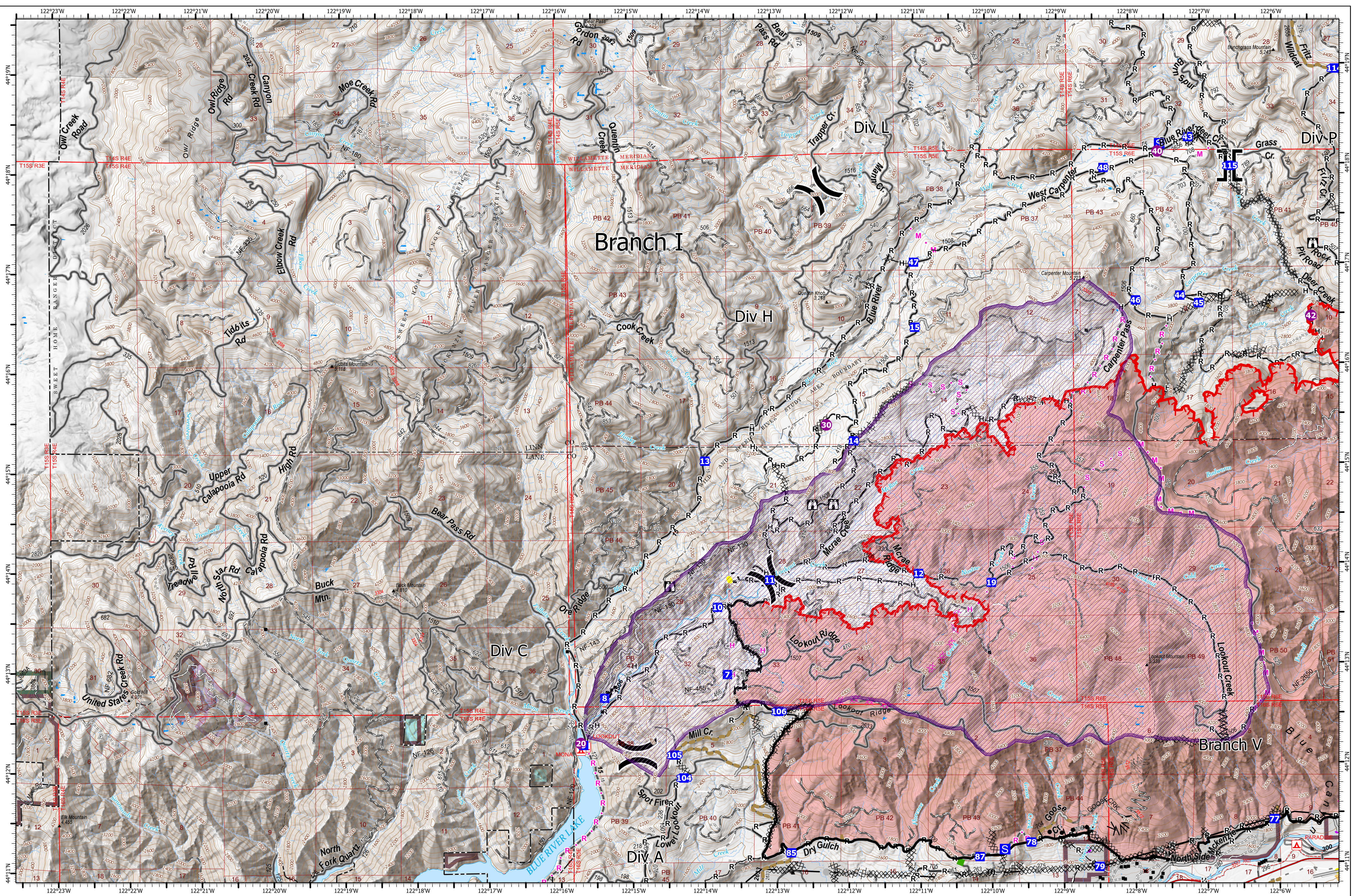
- | | | | | | | |
|------------------|-------------------------------------|-----------------------------------|-----------------------|-----------------------------------|-----------------------------------|------------------------------------|
| ● Helispot | — Completed Burnout | ✕ Planned Dozer Line | — Fence | 🚀 UAS Launch and Recovery Zone | ■ Giustina (Winberry) | ■ Waning Family LLC |
| ⌋ Division Break | — Completed Dozer Line | — Planned Hand Line | ● Highlighted Feature | 🔥 Fire Area | ■ Government Unspecified | ■ Weyerhaeuser Timber Holdings Inc |
| ⌋ Branch Break | — Completed Fuel Break | — Planned Mixed Construction Line | — Other | 🔥 Previous RX Burn | ■ Oregon Dept of State Lands | ■ De-Energized Transmission Line |
| ● Drop Point | — Completed Hand Line | — Planned Road as Line | — Repair Line | 🔥 Cadore Timber Co | ■ Pangaea Pacific Timberlands LLC | ● Energized Transmission Line |
| ⌋ Camp | — Completed Mixed Construction Line | — Planned Secondary Line | — Road Repair | 🔥 Franklin-Clarkson Timber Co LLC | ■ US Bureau of Land Management | |
| ⌋ Staging Area | — Completed Road as Line | — Access or Improved Road | — Escape Route | 🔥 Fruit Growers Supply Co Inc | ■ US Forest Service | |
| ⌋ Lookout | | | | | | |



9/15/2023 2222
North American 1983 Datum, Lat/Long Grid



Operations
Div A



Operations
Div C/Div H

Operations

Lookout

ORWIF-230327

09/16/2023

24,692 acres at 9/14/2023 @ 1947
Acres from IR & GPS

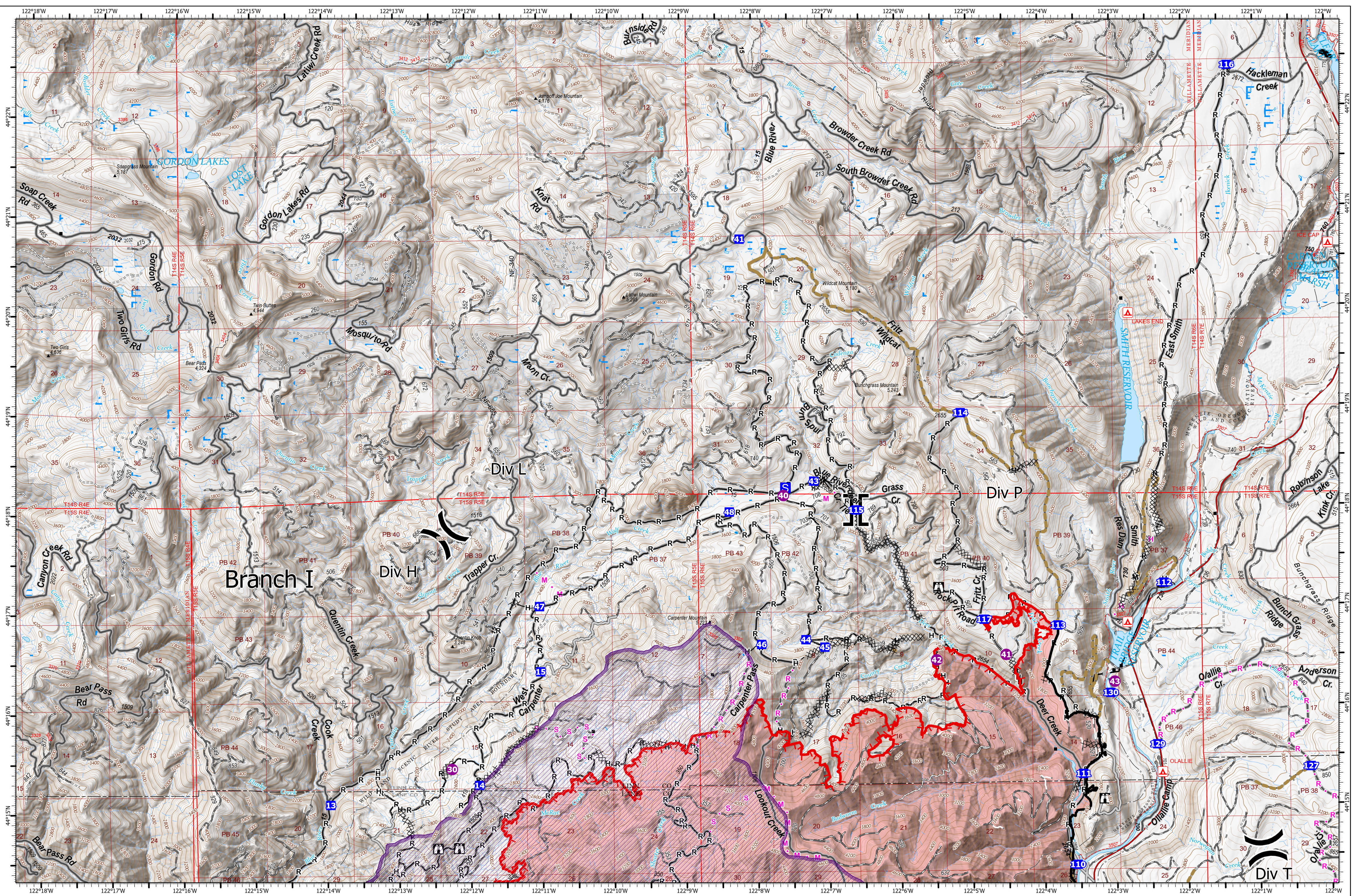
- | | | | | | | |
|----------------|-----------------------------------|------------------------|---------------------------|-----------------------------------|-----------------------------------|------------------------------------|
| ● Helispot | ⌘ Division Break | ⌘ Completed Dozer Line | ● Planned Road as Line | ➡ Escape Route | 🏠 Fruit Growers Supply Co Inc | 🌲 US Forest Service |
| ⌘ Branch Break | ⌘ Completed Fuel Break | ⌘ Completed Hand Line | ● Planned Secondary Line | 🚁 UAS Launch and Recovery Zone | 🏠 Giustina (Winberry) | 🏠 Waning Family LLC |
| ● Drop Point | ⌘ Completed Road as Line | ⌘ Completed Burnout | ● Access or Improved Road | 🔥 Fire Area | 🏠 Government Unspecified | 🏠 Weyerhaeuser Timber Holdings Inc |
| ● Staging Area | ⌘ Planned Dozer Line | ⌘ Planned Hand Line | ● Highlighted Feature | 🔥 Previous RX Burn | 🏠 Oregon Dept of State Lands | 🏠 De-Energized Transmission Line |
| 🏠 Lookout | ⌘ Planned Mixed Construction Line | ⌘ Road Repair | ⌘ Other | 🏠 Cadore Timber Co | 🏠 Pangaea Pacific Timberlands LLC | |
| | | | ⌘ Repair Line | 🏠 Franklin-Clarkson Timber Co LLC | 🏠 US Bureau of Land Management | |



9/15/2023 22:19
North American 1983 Datum, Lat/Long Grid

0 1 2 Miles

Operations
Div C/Div H



Operations
Div L

Operations

Lookout

ORWIF-230327

09/16/2023

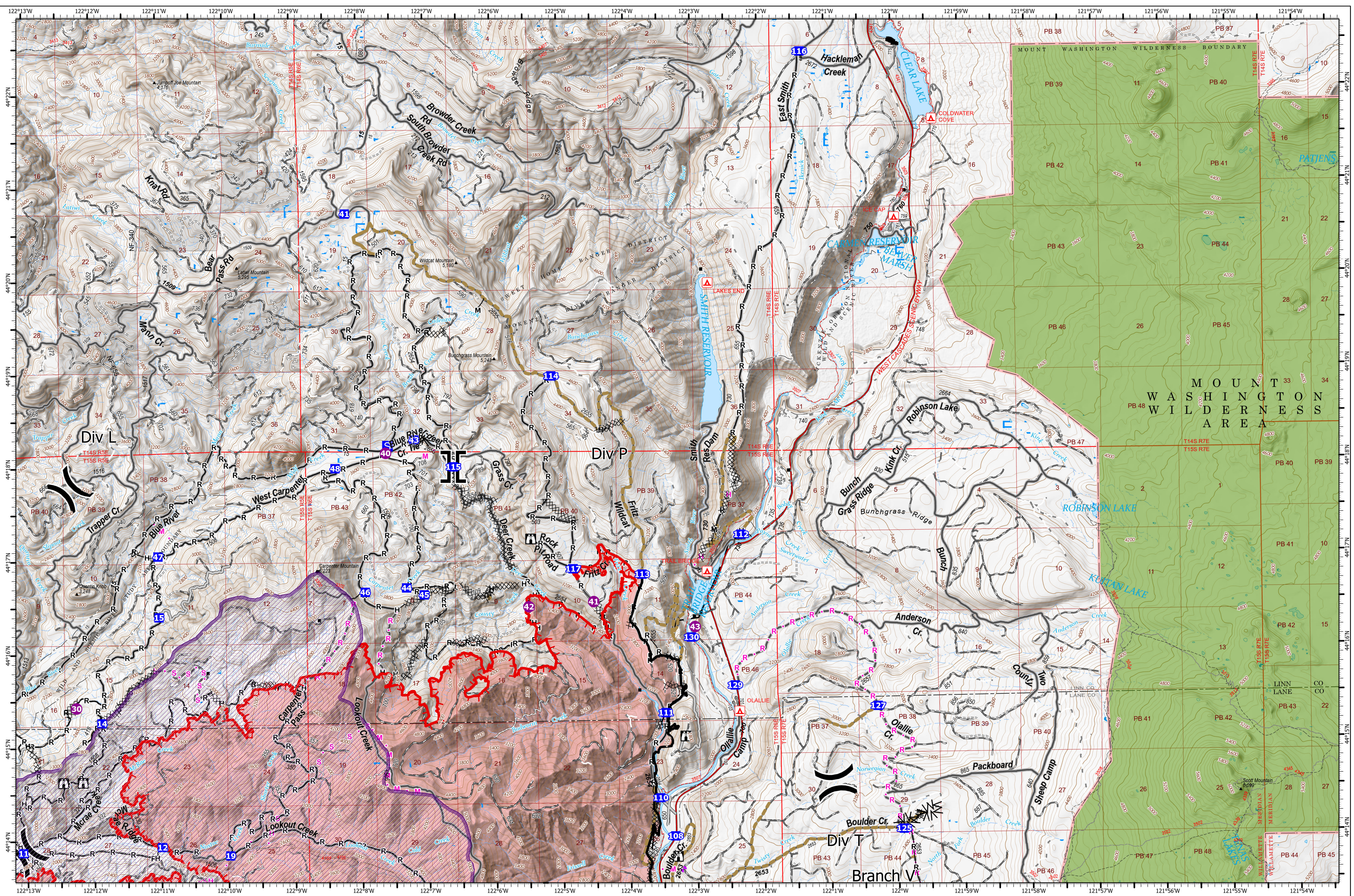
24,692 acres at 9/14/2023 @ 1947
Acres from IR & GPS

- | | | | | | | |
|----------------|-------------------------------------|--------------------------|-----------------------------------|-----------------------------------|-----------------------------------|------------------------------------|
| ● Helispot | ⌘ Division Break | ⌘ Completed Dozer Line | ● Planned Mixed Construction Line | — Road Repair | — Government Unspecified | — Waning Family LLC |
| ⌘ Branch Break | — Completed Fuel Break | — Completed Hand Line | ● Planned Road as Line | — Fire Area | — Oregon Dept of State Lands | — Weyerhaeuser Timber Holdings Inc |
| ● Drop Point | — Completed Mixed Construction Line | — Completed Road as Line | ● Planned Secondary Line | — Cadore Timber Co | — Pangaea Pacific Timberlands LLC | — US Bureau of Land Management |
| ● Staging Area | — Access or Improved Road | — Other | — Repair Line | — Franklin-Clarkson Timber Co LLC | — US Forest Service | — De-Energized Transmission Line |
| ● Lookout | — Planned Hand Line | | | — Fruit Growers Supply Co Inc | | |
| | | | | — Giustina (Winberry) | | |



9/15/2023 2220
North American 1983 Datum, Lat/Long Grid
0 1 2 Miles

Operations
Div L



Operations
Div P

Operations

Lookout

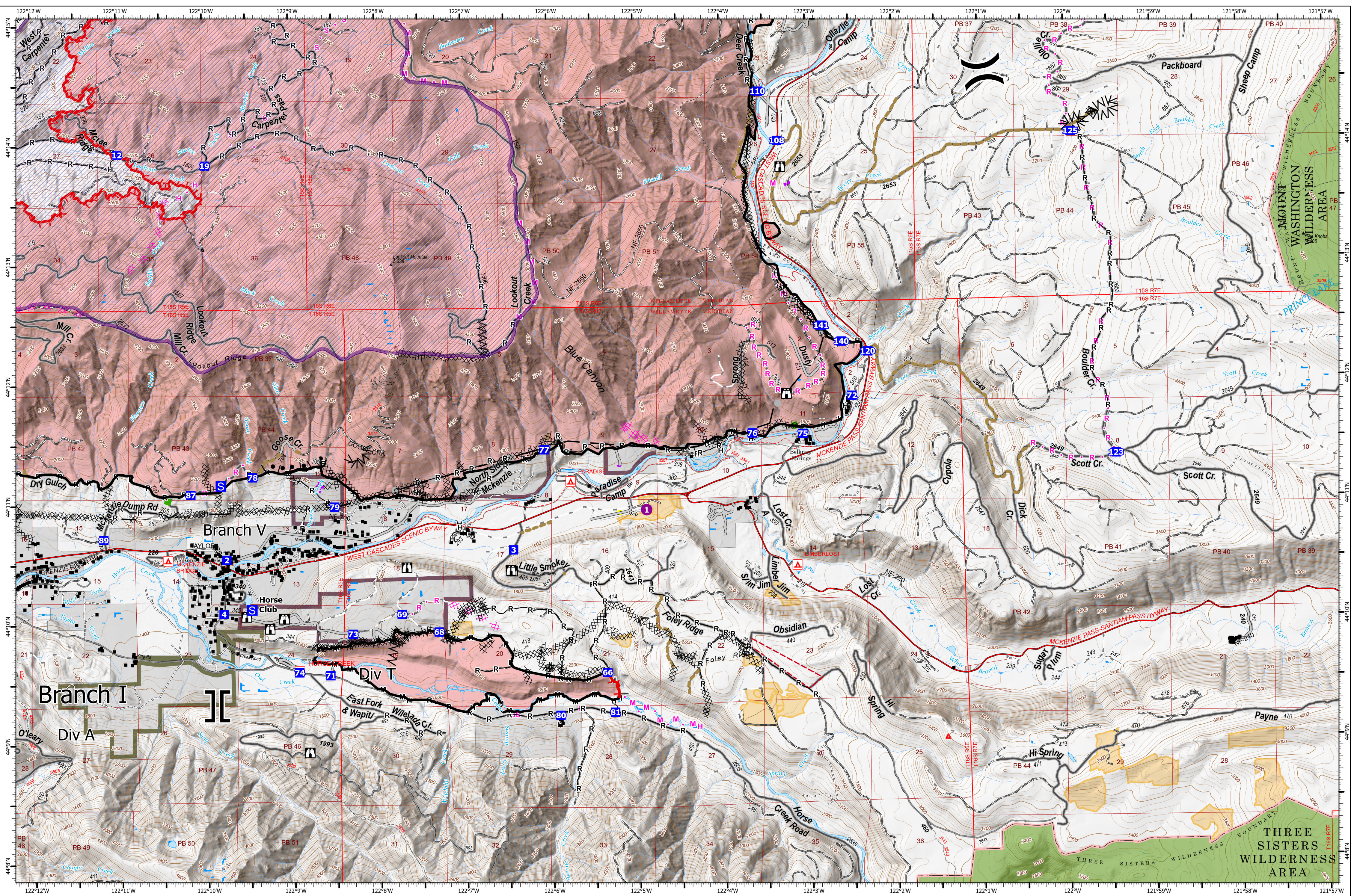
ORWIF-230327
09/16/2023
24,692 acres at 9/14/2023 @ 1947
Acres from IR & GPS

- | | | | | | |
|-------------------------|-------------------------------------|-----------------------------------|-----------------------------------|-----------------------------------|------------------------------------|
| ● Helispot | — Completed Fuel Break | — Planned Mixed Construction Line | — Repair Line | — Fruit Growers Supply Co Inc | — US Forest Service |
|) (Division Break | — Completed Hand Line | — Planned Road as Line | — Road Repair | — Giustina (Winberry) | — Waning Family LLC |
|] [Branch Break | — Completed Mixed Construction Line | — Planned Secondary Line | — UAS Launch and Recovery | — Government Unspecified | — Weyerhaeuser Timber Holdings Inc |
| ■ Drop Point | — Completed Road as Line | — Access or Improved Road | — Fire Area | — Oregon Dept of State Lands | — De-Energized Transmission Line |
| Ⓢ Staging Area | — Planned Dozer Line | — Highlighted Feature | — Cadore Timber Co | — Pangaea Pacific Timberlands LLC | |
| Ⓜ Lookout | — Planned Hand Line | — Other | — Franklin-Clarkson Timber Co LLC | — US Bureau of Land Management | |
| ⓧⓧ Completed Dozer Line | | | | | |

9/15/2023 2221
North American 1983 Datum, Lat/Long Grid

0 1 2 Miles

Operations
Div P



Operations
Div T

Operations

Lookout

ORWIF-230327
09/16/2023
24,692 acres at 9/14/2023 @ 1947
Acres from IR & GPS

- | | | | | | |
|---------------------|-------------------------------------|-----------------------------------|---------------------------|-----------------------------------|------------------------------------|
| ● Helispot | ⌘ Completed Dozer Line | M Planned Mixed Construction Line | — Repair Line | ■ Franklin-Clarkson Timber Co LLC | ■ US Bureau of Land Management |
|) Division Break | ⌘ Completed Fuel Break | P Planned Road as Line | — Road Repair | ■ Fruit Growers Supply Co Inc | ■ US Forest Service |
|] Branch Break | H Completed Hand Line | R Planned Secondary Line | — Escape Route | ■ Giustina (Winberry) | ■ Waning Family LLC |
| ■ Drop Point | M Completed Mixed Construction Line | — Access or Improved Road | — UAS Launch and Recovery | ■ Government Unspecified | ■ Weyerhaeuser Timber Holdings Inc |
| S Staging Area | R Completed Road as Line | — Fence | ■ Fire Area | ■ Oregon Dept of State Lands | ■ De-Energized Transmission Line |
| ⌘ Lookout | ⌘ Planned Dozer Line | ● Highlighted Feature | ■ Previous RX Burn | ■ Pangaea Pacific Timberlands LLC | |
| ⌘ Completed Burnout | H Planned Hand Line | — Other | ■ Cadore Timber Co | | |



Operations
Div T