


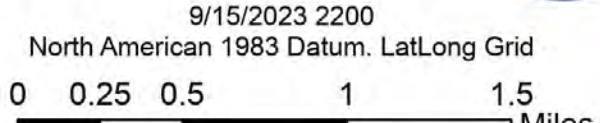
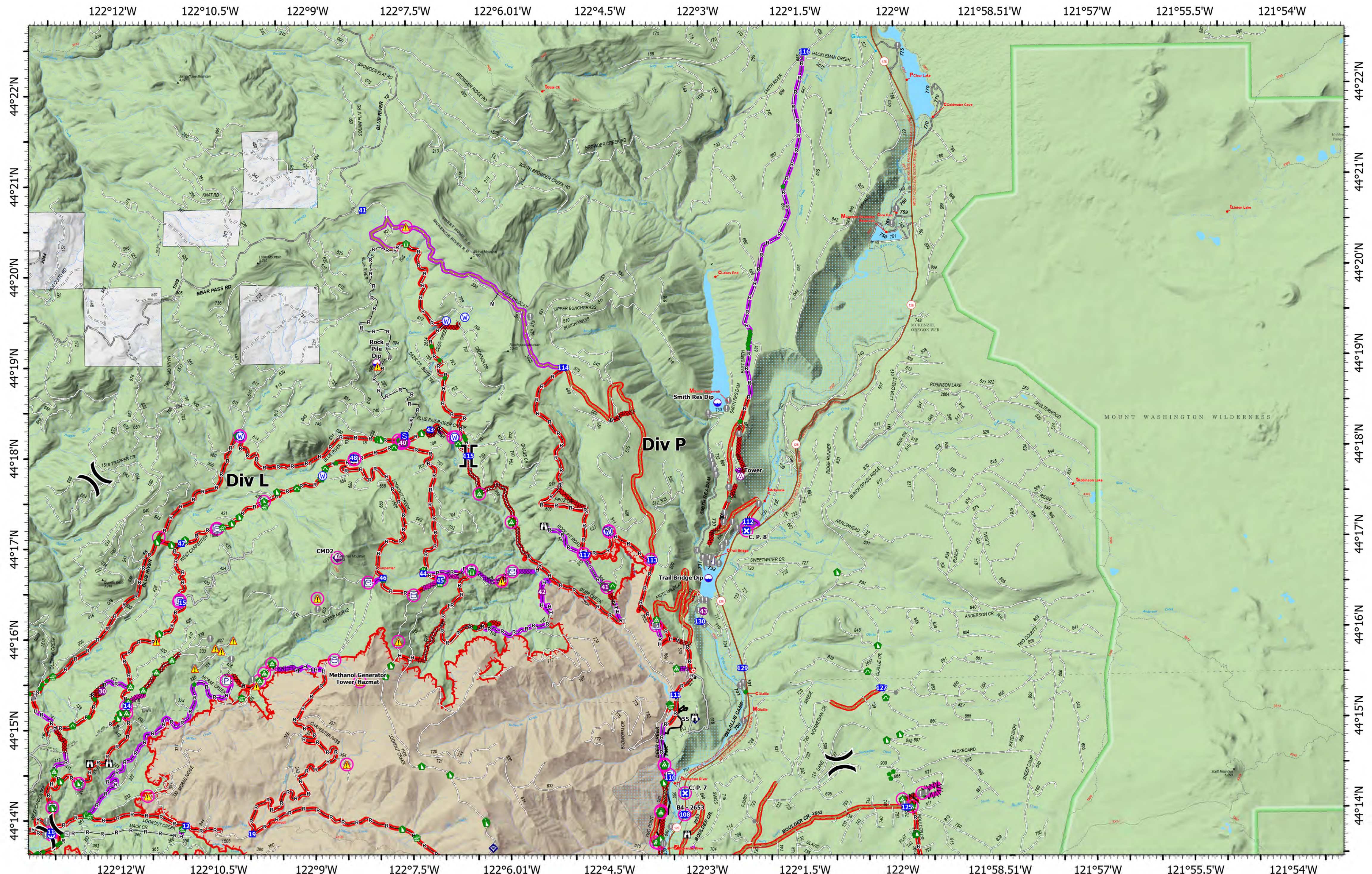



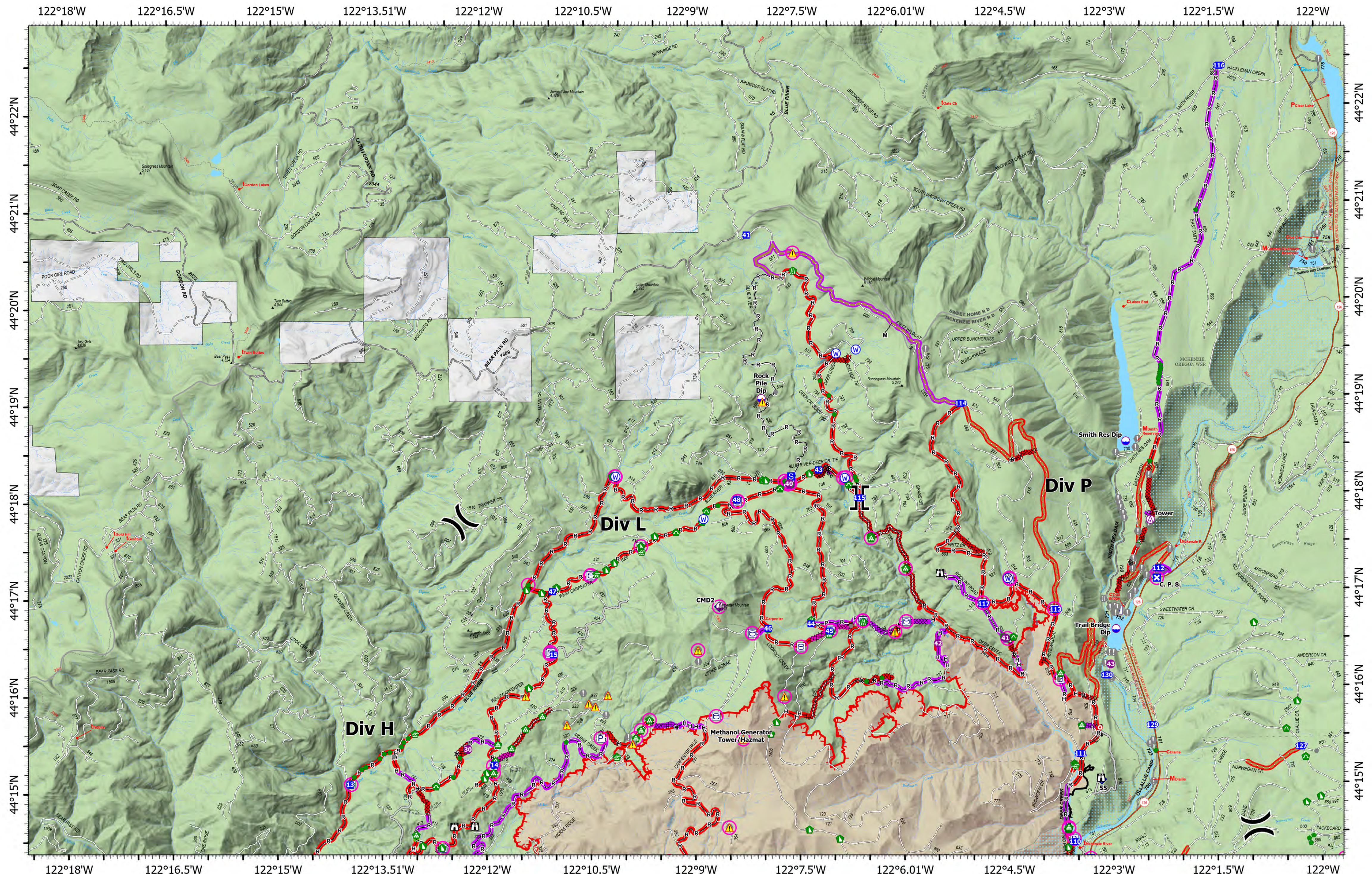


Repair Div T	<h1>Repair</h1> <h2>Lookout</h2> <h3>ORWIF-230327</h3> <h4>09/16/2023</h4> <p><i>Acres from IR & GPS</i> 24,692 acres at 9/14/2023 @ 1947</p>	<ul style="list-style-type: none"> ○ In Use - Fire Management ○ In Use - Fire Management ○ Needs Assessment ○ Repair Needed ○ In Progress ○ Completed - Inspected ○ No Repair Needed ○ In Use - Fire Management 	<ul style="list-style-type: none"> ● Repair Needed ○ Other - See Comments ○ Aerial Hazard ○ Airstrip or Airport ○ Dip Site ○ Helispot) Division Break Branch Break ○ Drop Point X Closure 	<ul style="list-style-type: none"> S Staging Area L Lookout ○ Hot Spot - Spot Fire X Fire Origin ○ Value at Risk ○ Other ○ Gate ○ Bridge ○ Water Development or Draft Site 	<ul style="list-style-type: none"> ○ Structure Wrap ○ Stream Crossing ○ Road Repair ○ Resource Location ○ Repair Point ○ Landing or Log Deck ○ Hazard Tree ○ Fence - Cut/Damaged ○ Dozer Push ○ Culvert 	<ul style="list-style-type: none"> ○ Clean Up Area ○ Mobile Weather Unit ○ Internet Access ○ Repeater ○ Hazard ○ Water Source ○ Other Property ○ Pump ○ Water Tank 	<ul style="list-style-type: none"> L Completed Burnout X Completed Fuel Line X Completed Dozer Break H Completed Hand Line M Completed Mixed Construction Line R Completed Road as Line X Planned Dozer Line — Access or Improved Road 	<ul style="list-style-type: none"> — Fence — Other — Repair Line — Road Repair — Retardant Drop — UAS Launch and Recovery Zone — Contained — Uncontained Fire Edge 	<ul style="list-style-type: none"> □ Wildfire Daily Fire Perimeter □ Franklin-Clarkson Timber Co LLC □ Giustina (Winberry) 		<div style="text-align: center;">  <p>9/15/2023 2200 North American 1983 Datum. LatLong Grid</p> </div>		Repair Div T
													



Repair Div P	<h1>Repair</h1> <h2>Lookout</h2> <h3>ORWIF-230327</h3> <h4>09/16/2023</h4> <p><i>Acres from IR & GPS</i> 24,692 acres at 9/14/2023 @ 1947</p>	<ul style="list-style-type: none"> ○ In Use - Fire Management ○ In Use - Fire Management ○ Needs Assessment ○ Repair Needed ○ Completed - Inspected ○ No Repair Needed ○ In Use - Fire Management 	<ul style="list-style-type: none"> ● Other - See Comments ○ Aerial Hazard ○ Dip Site ○ Helispot ○ Sling Site) Division Break Branch Break Drop Point Closure 	<ul style="list-style-type: none"> S Staging Area f Lookout f Hot Spot - Spot Fire f Value at Risk ● Other G Gate B Bridge W Water Development or Draft Site 	<ul style="list-style-type: none"> R Road Repair L Landing or Log Deck F Fence - Cut/Damaged D Dozer Push C Culvert M Mobile Weather Unit I Internet Access R Repeater 	<ul style="list-style-type: none"> ▲ Hazard W Water Source P Other Property P Pump W Water Tank X Completed Dozer Line M Completed Fuel Break H Completed Hand Line 	<ul style="list-style-type: none"> M Completed Mixed Construction Line R Completed Road as Line A Access or Improved Road O Other R Repair Line R Road Repair R UAS Launch and Recovery Zone 	<ul style="list-style-type: none"> — Contained — Uncontained Fire Edge — Wildfire Daily Fire Perimeter 		 <p>9/15/2023 2158 North American 1983 Datum. LatLong Grid</p>		Repair Div P
	<p>0 0.25 0.5 1 1.5 Miles</p>											



Repair
Div L

Repair
Lookout
ORWIF-230327
09/16/2023
Acres from IR & GPS
24,692 acres at 9/14/2023 @ 1947

<ul style="list-style-type: none"> ○ In Use - Fire Management ▬ In Use - Fire Management ▬ Needs Assessment ▬ Repair Needed ▬ Completed - Inspected ▬ No Repair Needed 	<ul style="list-style-type: none"> ○ In Use - Fire Management ● Other - See Comments ⚠ Aerial Hazard ⚠ Dip Site ⚠ Helispot ⚠ Sling Site ⚠ Division Break 	<ul style="list-style-type: none"> ⌋ Branch Break ⊠ Drop Point ⊠ Closure ⊠ Staging Area ⊠ Lookout ⊠ Hot Spot - Spot Fire ⊠ Value at Risk ● Other 	<ul style="list-style-type: none"> ⊠ Bridge ⊠ Water Development or Draft Site ⊠ Road Repair ⊠ Repair Point ⊠ Landing or Log Deck ⊠ Dozer Push ⊠ Culvert 	<ul style="list-style-type: none"> ⊠ Mobile Weather Unit ⊠ Repeater ⚠ Hazard ⊠ Water Source ⊠ Other Property ⊠ Pump ⊠ Water Tank ⊠ Completed Dozer Line 	<ul style="list-style-type: none"> ▬ Completed Fuel Break ▬ Completed Hand Line ▬ Completed Mixed Construction Line ▬ Completed Road as Line ▬ Access or Improved Road ▬ Other ▬ Repair Line 	<ul style="list-style-type: none"> ▬ Road Repair ▬ Contained ▬ Uncontained Fire Edge ▬ Wildfire Daily Fire Perimeter
--	--	--	--	--	--	--







9/15/2023 2157
 North American 1983 Datum. LatLong Grid

0

0.25

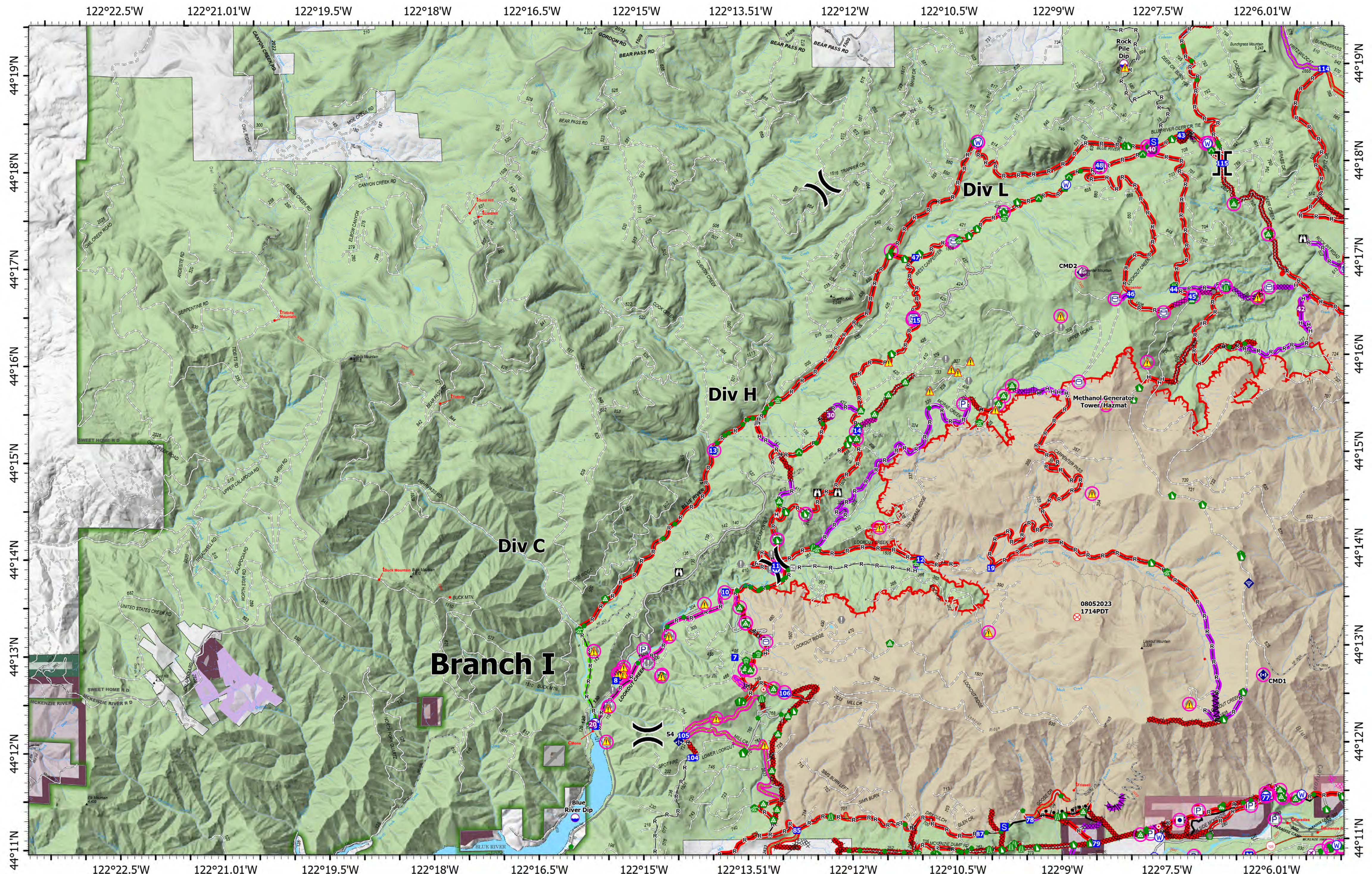
0.5

1

1.5

Miles

Repair
Div L



Repair
Div C/Div H

Repair

Lookout
ORWIF-230327
09/16/2023

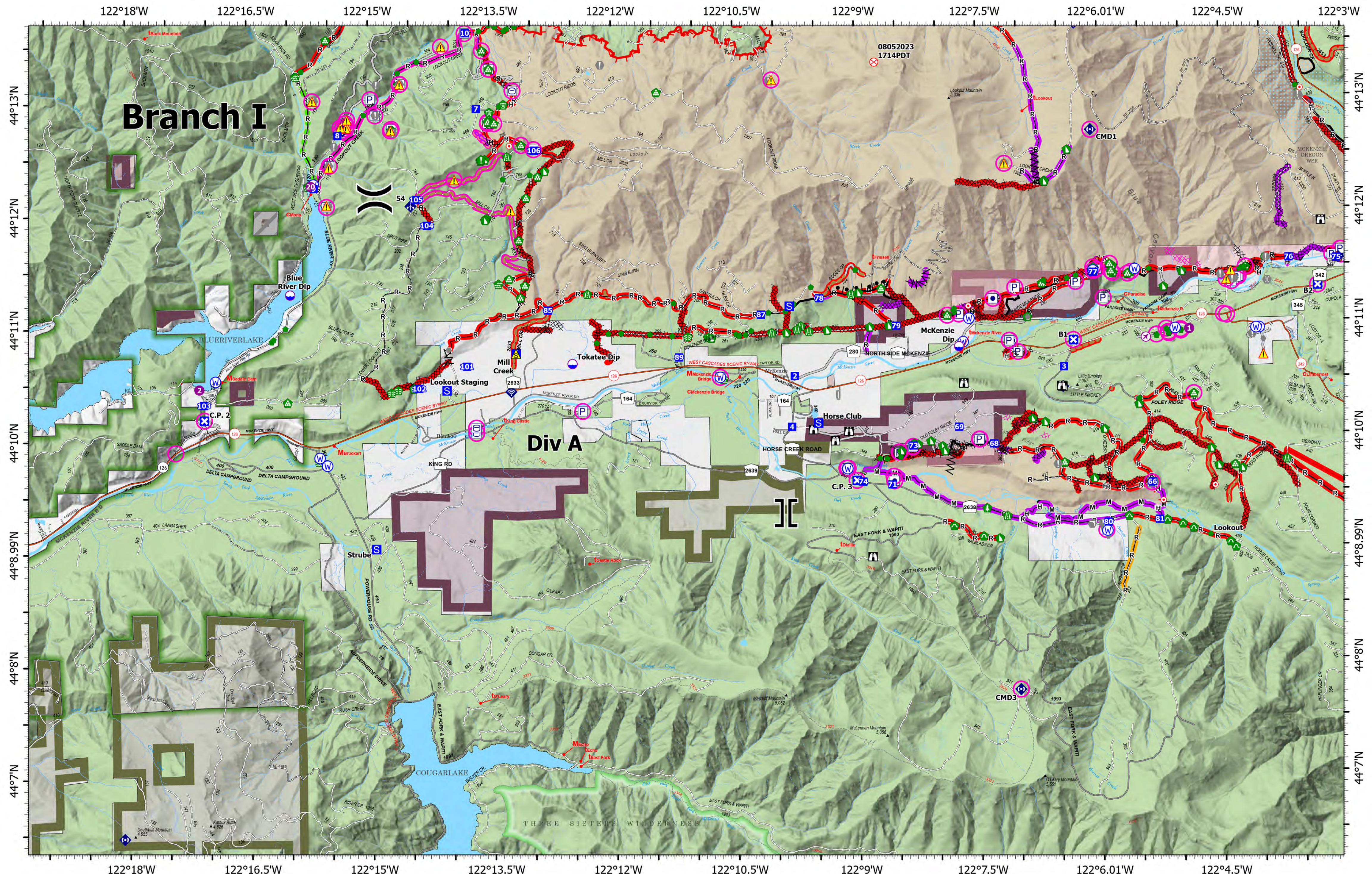
Acres from IR & GPS
24,692 acres at 9/14/2023 @ 1947

- | | | | | | | | |
|---|--|--|---|--|---|---|---|
| <ul style="list-style-type: none"> ○ In Use - Fire Management ○ In Use - Fire Management ○ Needs Assessment ○ Repair Needed ○ Completed - Inspected ○ No Repair Needed ○ In Use - Fire Management | <ul style="list-style-type: none"> ● Repair Needed ○ Airstrip or Airport ○ Dip Site ○ Helispot ○ Sling Site X Division Break Branch Break ○ Drop Point X Closure | <ul style="list-style-type: none"> S Staging Area A Lookout ● Hot Spot - Spot Fire X Fire Origin ● Value at Risk ○ Other ○ Gate ○ Water Development or Draft Site | <ul style="list-style-type: none"> ○ Stream Crossing ○ Road Repair ○ Resource Location ○ Repair Point ○ Landing or Log Deck ○ Dozer Push ○ Culvert ○ Clean Up Area ○ Mobile Weather Unit | <ul style="list-style-type: none"> ○ Internet Access ○ Repeater ○ Hazard ○ Water Source ○ Other Property ○ Pump ○ Water Tank ○ Completed Burnout X Completed Dozer Line | <ul style="list-style-type: none"> — Completed Fuel Break — Completed Hand Line — Completed Road as Line — Planned Dozer Line — Access or Improved Road — Other — Repair Line — Road Repair | <ul style="list-style-type: none"> — Retardant Drop — UAS Launch and Recovery Zone — Contained — Uncontained Fire Edge — Wildfire Daily Fire Perimeter — Cadore Timber Co — Giustina (Winberry) | <ul style="list-style-type: none"> ■ Oregon Dept of State Lands ■ Weyerhaeuser Timber Holdings Inc |
|---|--|--|---|--|---|---|---|



9/15/2023 2156
North American 1983 Datum. LatLong Grid
0 0.25 0.5 1 1.5
Miles

Repair
Div C/Div H



Repair
Lookout
 ORWIF-230327
 09/16/2023
Acres from IR & GPS
 24,692 acres at 9/14/2023 @ 1947

In Use - Fire Management	Repair Needed	Lookout	Road Repair	Repeater	Completed Fuel Break	Repair Line	Giustina (Winberry)
In Use - Fire Management	Airstrip or Airport	Hot Spot - Spot Fire	Resource Location	Safety Zone	Completed Hand Line	Road Repair	Oregon Dept of State Lands
In Use - Fire Management	Dip Site	Fire Origin	Repair Point	Hazard	Completed Mixed Construction Line	Retardant Drop	
In Use - Fire Management	Helispot	Value at Risk	Landing or Log Deck	Water Source	Completed Road as Line	UAS Launch and Recovery Zone	
In Use - Fire Management	Needs Assessment	Other	Hazard Tree	Other Property	Planned Dozer Line	Contained	
In Use - Fire Management	Repair Needed	Gate	Clean Up Area	Pump	Access or Improved Road	Uncontained Fire Edge	
In Use - Fire Management	In Progress	Bridge	Culvert	Water Tank	Fence	Wildfire Daily Fire Perimeter	
In Use - Fire Management	Completed - Inspected	Water Development or Draft Site	Clean Up Area	Completed Burnout	Other	Franklin-Clarkson Timber Co LLC	
In Use - Fire Management	No Repair Needed	Stream Crossing	Mobile Weather Unit	Completed Dozer Line			
In Use - Fire Management	In Use - Fire Management	Staging Area	Internet Access				

9/15/2023 2155
 North American 1983 Datum. LatLong Grid

0 0.25 0.5 1 1.5 Miles

Repair
 Div A