

Operations  
Div A

# Operations

Lookout

ORWIF-230327

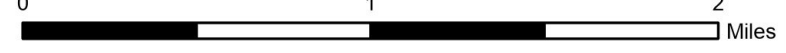
09/17/2023

24,843 acres at 9/15/2023 @ 1945  
Acres from IR & GPS

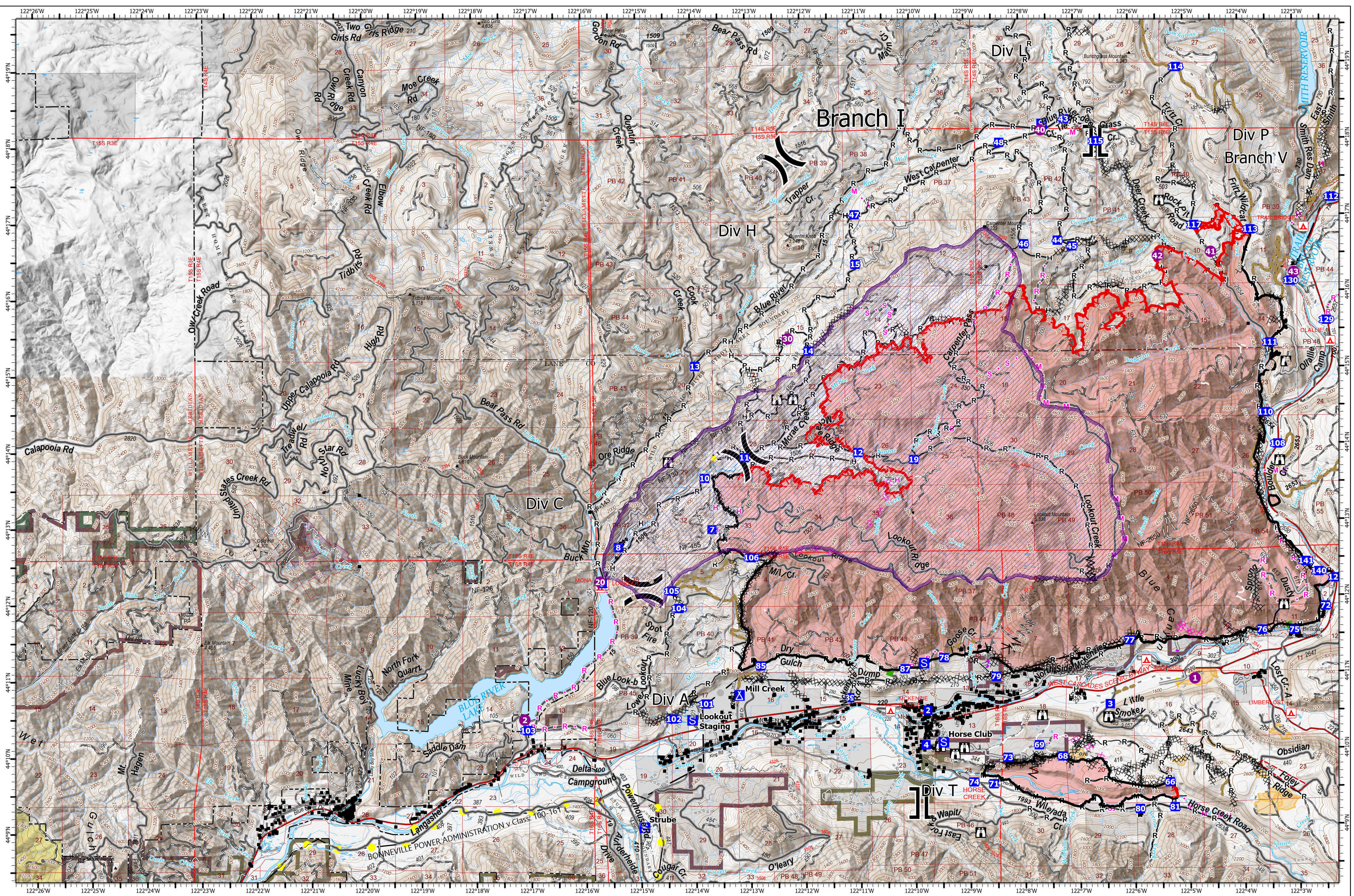
- |                  |                                     |                                   |                       |                                   |                                  |                                    |
|------------------|-------------------------------------|-----------------------------------|-----------------------|-----------------------------------|----------------------------------|------------------------------------|
| ● Helispot       | — Completed Burnout                 | ✕ Planned Dozer Line              | — Fence               | 🚀 UAS Launch and Recovery Zone    | ■ Giustina (Winberry)            | ■ Waning Family LLC                |
| ⌋ Division Break | — Completed Dozer Line              | — Planned Hand Line               | ● Highlighted Feature | 🔥 Fire Area                       | ■ Government Unspecified         | ■ Weyerhaeuser Timber Holdings Inc |
| ⌋ Branch Break   | — Completed Fuel Break              | — Planned Mixed Construction Line | — Other               | 🔥 Previous RX Burn                | ■ Oregon Dept of State Lands     | ■ Pangaea Pacific Timberlands LLC  |
| ● Drop Point     | — Completed Hand Line               | — Planned Road as Line            | — Repair Line         | 🔥 Cadore Timber Co                | ■ Pangea Pacific Timberlands LLC | ■ US Bureau of Land Management     |
| ⌋ Camp           | — Completed Mixed Construction Line | — Planned Secondary Line          | — Road Repair         | 🔥 Franklin-Clarkson Timber Co LLC | ■ US Forest Service              | — De-Energized Transmission Line   |
| ⌋ Staging Area   | — Completed Road as Line            | — Access or Improved Road         | — Escape Route        | 🔥 Fruit Growers Supply Co Inc     | ● Energized Transmission Line    |                                    |
| ⌋ Lookout        |                                     |                                   |                       |                                   |                                  |                                    |



9/16/2023 2222  
North American 1983 Datum, Lat/Long Grid



Operations  
Div A



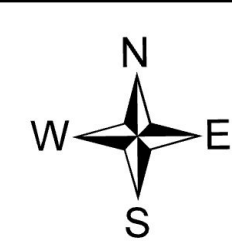
Operations  
Div C/Div H

# Operations

## Lookout

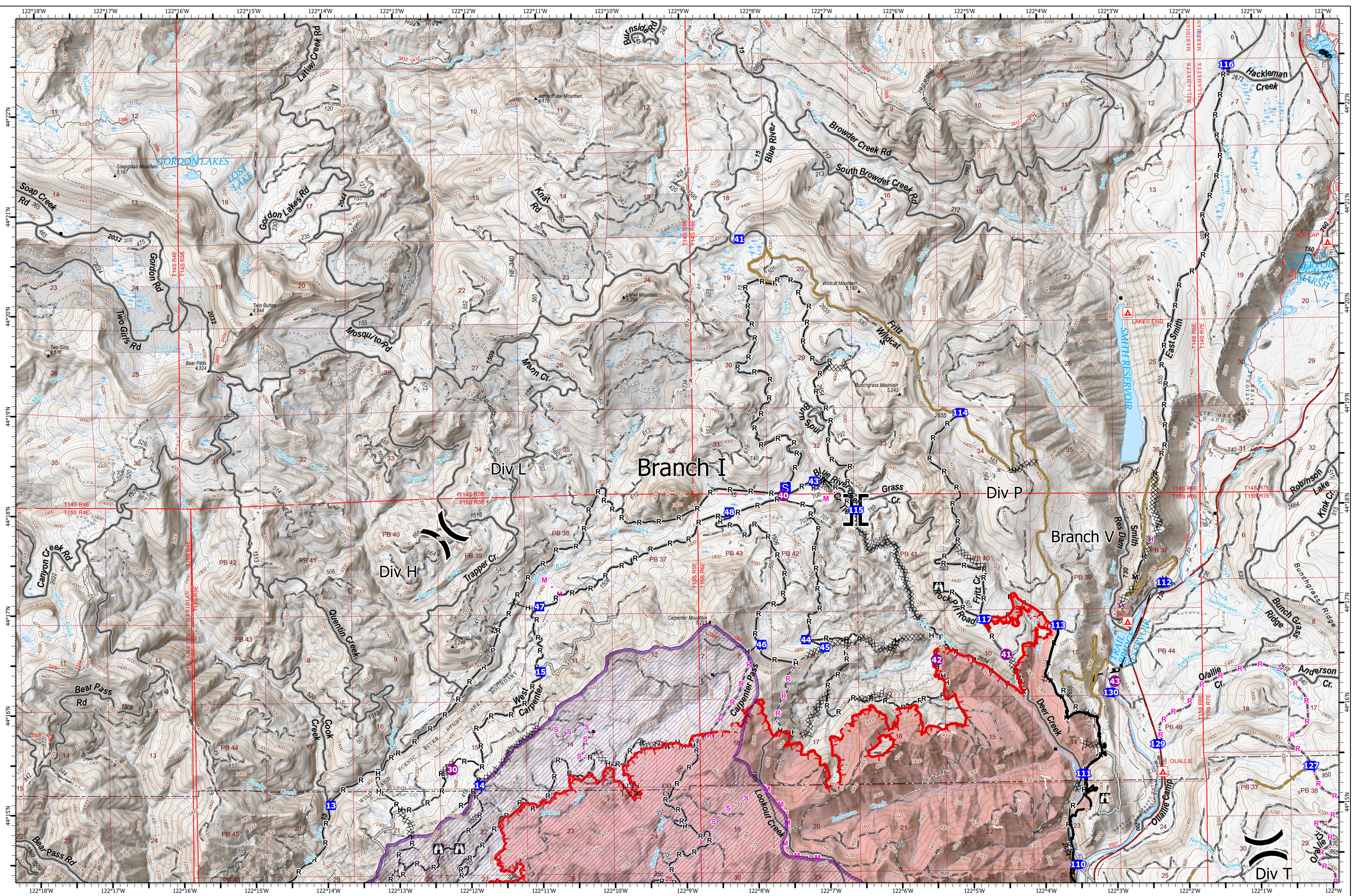
ORWIF-230327  
09/17/2023  
24,843 acres at 9/15/2023 @ 1945  
Acres from IR & GPS

- |                  |                                     |                                   |                       |                                   |                                   |                                    |
|------------------|-------------------------------------|-----------------------------------|-----------------------|-----------------------------------|-----------------------------------|------------------------------------|
| ● Helispot       | ⌂ Completed Burnout                 | ⌘ Planned Dozer Line              | — Fence               | ⚡ UAS Launch and Recovery Zone    | ■ Giustina (Winberry)             | ■ Waning Family LLC                |
| ⌘ Division Break | ⌘ Completed Dozer Line              | ⌘ Planned Hand Line               | ● Highlighted Feature | 🔥 Fire Area                       | ■ Government Unspecified          | ■ Weyerhaeuser Timber Holdings Inc |
| ⌘ Branch Break   | ⌘ Planned Fuel Break                | ⌘ Planned Mixed Construction Line | — Other               | 🔥 Previous RX Burn                | ■ Oregon Dept of State Lands      | ■ De-Energized Transmission Line   |
| ● Drop Point     | ⌘ Completed Hand Line               | ⌘ Planned Road as Line            | — Repair Line         | ■ Cadore Timber Co                | ■ Pangaea Pacific Timberlands LLC | ● Energized Transmission Line      |
| ⌘ Camp           | ⌘ Completed Mixed Construction Line | ⌘ Planned Secondary Line          | — Road Repair         | ■ Franklin-Clarkson Timber Co LLC | ■ US Bureau of Land Management    |                                    |
| ⌘ Staging Area   | ⌘ Completed Road as Line            | — Access or Improved Road         | — Escape Route        | ■ Fruit Growers Supply Co Inc     | ■ US Forest Service               |                                    |
| ⌘ Lookout        |                                     |                                   |                       |                                   |                                   |                                    |



9/16/2023 2212  
North American 1983 Datum, Lat/Long Grid  
0 1 2 Miles

Operations  
Div C/Div H



Operations  
Div L

# Operations

Lookout

ORWIF-230327

09/17/2023

24,843 acres at 9/15/2023 @ 1945  
Acres from IR & GPS

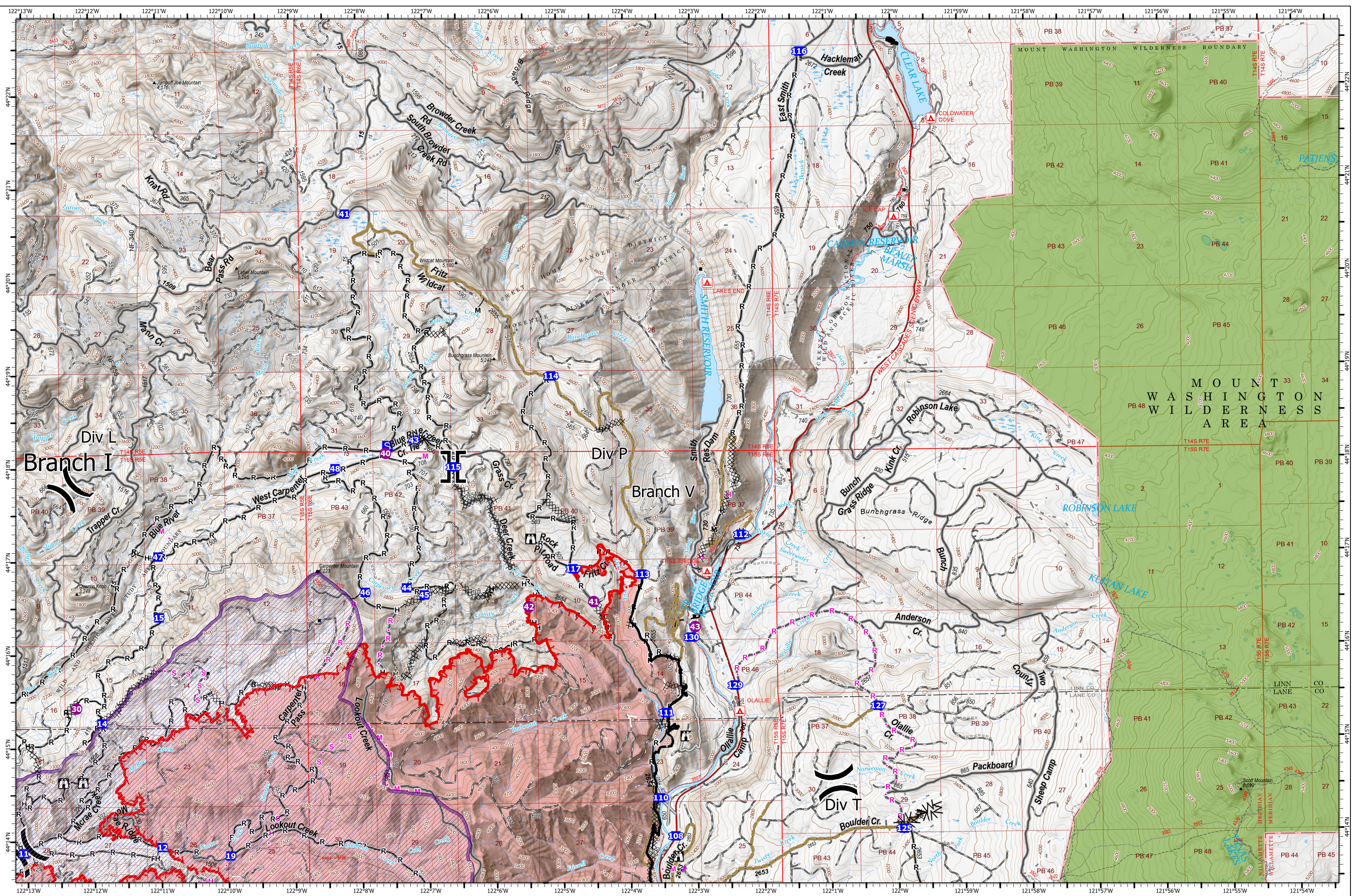
- |                    |                                     |                                   |                                   |                                   |                                    |
|--------------------|-------------------------------------|-----------------------------------|-----------------------------------|-----------------------------------|------------------------------------|
| ● Helispot         | ⌘ Completed Dozer Line              | ● Planned Mixed Construction Line | — Road Repair                     | — Government Unspecified          | — Waning Family LLC                |
| ) ( Division Break | — Completed Fuel Break              | ● Planned Road as Line            | — Fire Area                       | — Oregon Dept of State Lands      | — Weyerhaeuser Timber Holdings Inc |
| ⌘ Branch Break     | — Completed Hand Line               | ● Planned Secondary Line          | — Cadore Timber Co                | — Pangaea Pacific Timberlands LLC | — De-Energized Transmission Line   |
| ● Drop Point       | — Completed Mixed Construction Line | — Access or Improved Road         | — Franklin-Clarkson Timber Co LLC | — US Bureau of Land Management    |                                    |
| ● Staging Area     | — Completed Road as Line            | — Other                           | — Fruit Growers Supply Co Inc     | — US Forest Service               |                                    |
| ⌘ Lookout          | ● Planned Hand Line                 | — Repair Line                     | — Giustina (Winberry)             |                                   |                                    |



9/16/2023 2214  
North American 1983 Datum, Lat/Long Grid

0 1 2 Miles

Operations  
Div L



Operations  
Div P

# Operations

## Lookout

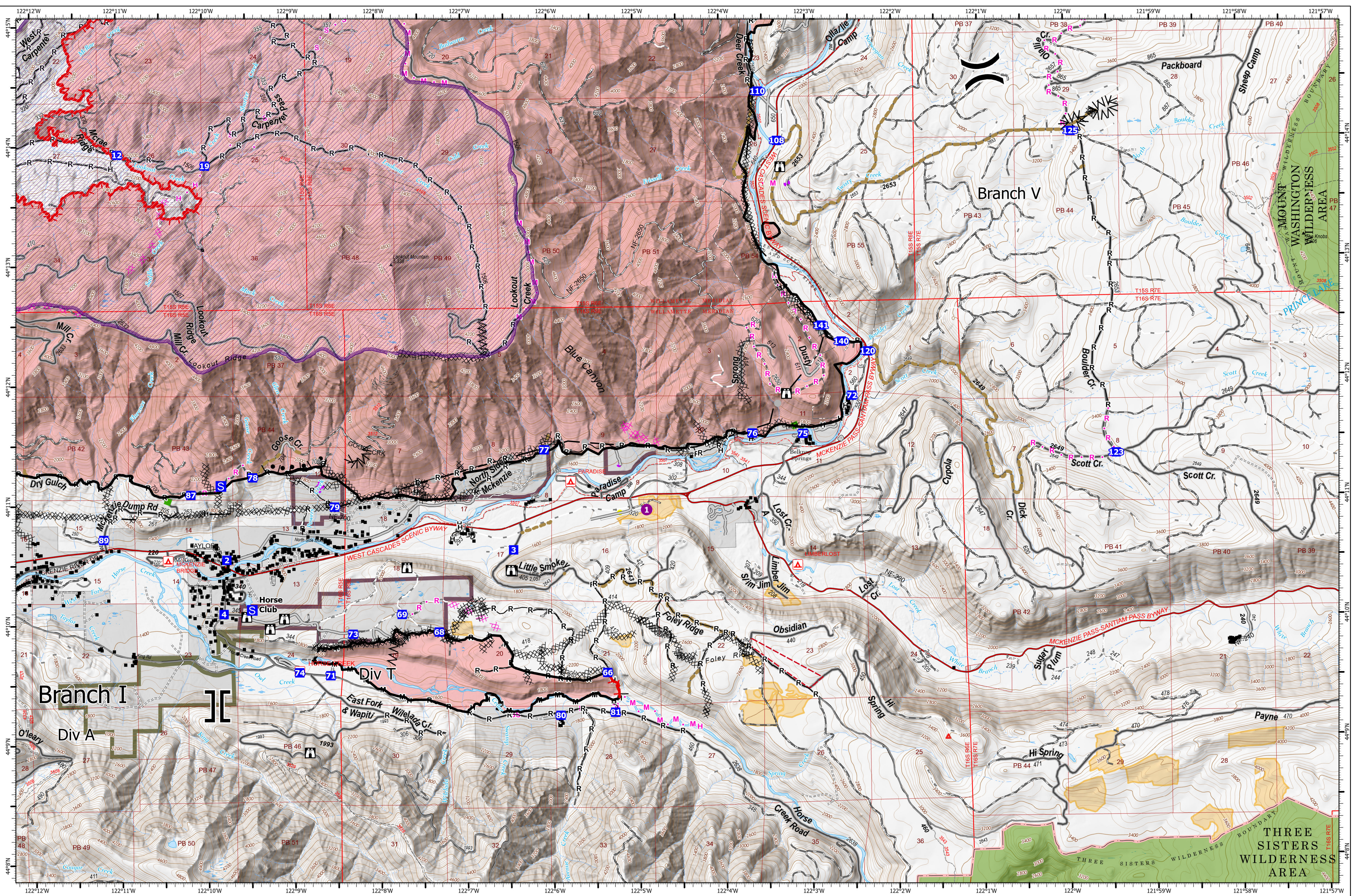
ORWIF-230327  
09/17/2023  
24,843 acres at 9/15/2023 @ 1945  
Acres from IR & GPS

- |                         |                                     |                                   |                                   |                                   |                                    |
|-------------------------|-------------------------------------|-----------------------------------|-----------------------------------|-----------------------------------|------------------------------------|
| ● Helispot              | — Completed Fuel Break              | — Planned Mixed Construction Line | — Repair Line                     | — Fruit Growers Supply Co Inc     | — US Forest Service                |
| ) ( Division Break      | — Completed Hand Line               | — Planned Road as Line            | — Road Repair                     | — Giustina (Winberry)             | — Waning Family LLC                |
| ⌋ Branch Break          | — Completed Mixed Construction Line | — Planned Secondary Line          | — UAS Launch and Recovery         | — Government Unspecified          | — Weyerhaeuser Timber Holdings Inc |
| ■ Drop Point            | — Completed Road as Line            | — Access or Improved Road         | — Fire Area                       | — Oregon Dept of State Lands      | — De-Energized Transmission Line   |
| Ⓢ Staging Area          | — Planned Dozer Line                | — Highlighted Feature             | — Cadore Timber Co                | — Pangaea Pacific Timberlands LLC |                                    |
| Ⓜ Lookout               | — Planned Hand Line                 | — Other                           | — Franklin-Clarkson Timber Co LLC | — US Bureau of Land Management    |                                    |
| ⓧⓧ Completed Dozer Line |                                     |                                   |                                   |                                   |                                    |

9/16/2023 22:17  
North American 1983 Datum, Lat/Long Grid

0 1 2 Miles

Operations  
Div P



Operations  
Div T

# Operations

## Lookout

ORWIF-230327  
09/17/2023  
24,843 acres at 9/15/2023 @ 1945  
Acres from IR & GPS

- |                     |                                     |                                   |                                |                                   |                                    |
|---------------------|-------------------------------------|-----------------------------------|--------------------------------|-----------------------------------|------------------------------------|
| ● Helispot          | ⌘ Completed Dozer Line              | M Planned Mixed Construction Line | — Repair Line                  | ■ Franklin-Clarkson Timber Co LLC | ■ US Bureau of Land Management     |
| ) Division Break    | ⌘ Completed Fuel Break              | P Planned Road as Line            | — Road Repair                  | ■ Fruit Growers Supply Co Inc     | ■ US Forest Service                |
| ] Branch Break      | H Completed Hand Line               | R Planned Secondary Line          | — Escape Route                 | ■ Giustina (Winberry)             | ■ Waning Family LLC                |
| ■ Drop Point        | M Completed Mixed Construction Line | S Planned Secondary Line          | — UAS Launch and Recovery Zone | ■ Government Unspecified          | ■ Weyerhaeuser Timber Holdings Inc |
| S Staging Area      | — Access or Improved Road           | — Fence                           | ■ Fire Area                    | ■ Oregon Dept of State Lands      | ■ De-Energized Transmission Line   |
| ⌘ Lookout           | R Completed Road as Line            | — Planned Dozer Line              | ■ Previous RX Burn             | ■ Pangaea Pacific Timberlands LLC |                                    |
| ⌘ Completed Burnout | ⌘ Planned Hand Line                 | — Other                           | ■ Cadore Timber Co             |                                   |                                    |

9/16/2023 2220  
North American 1983 Datum, Lat/Long Grid

0 1 2 Miles

Operations  
Div T