

Repair
Div A

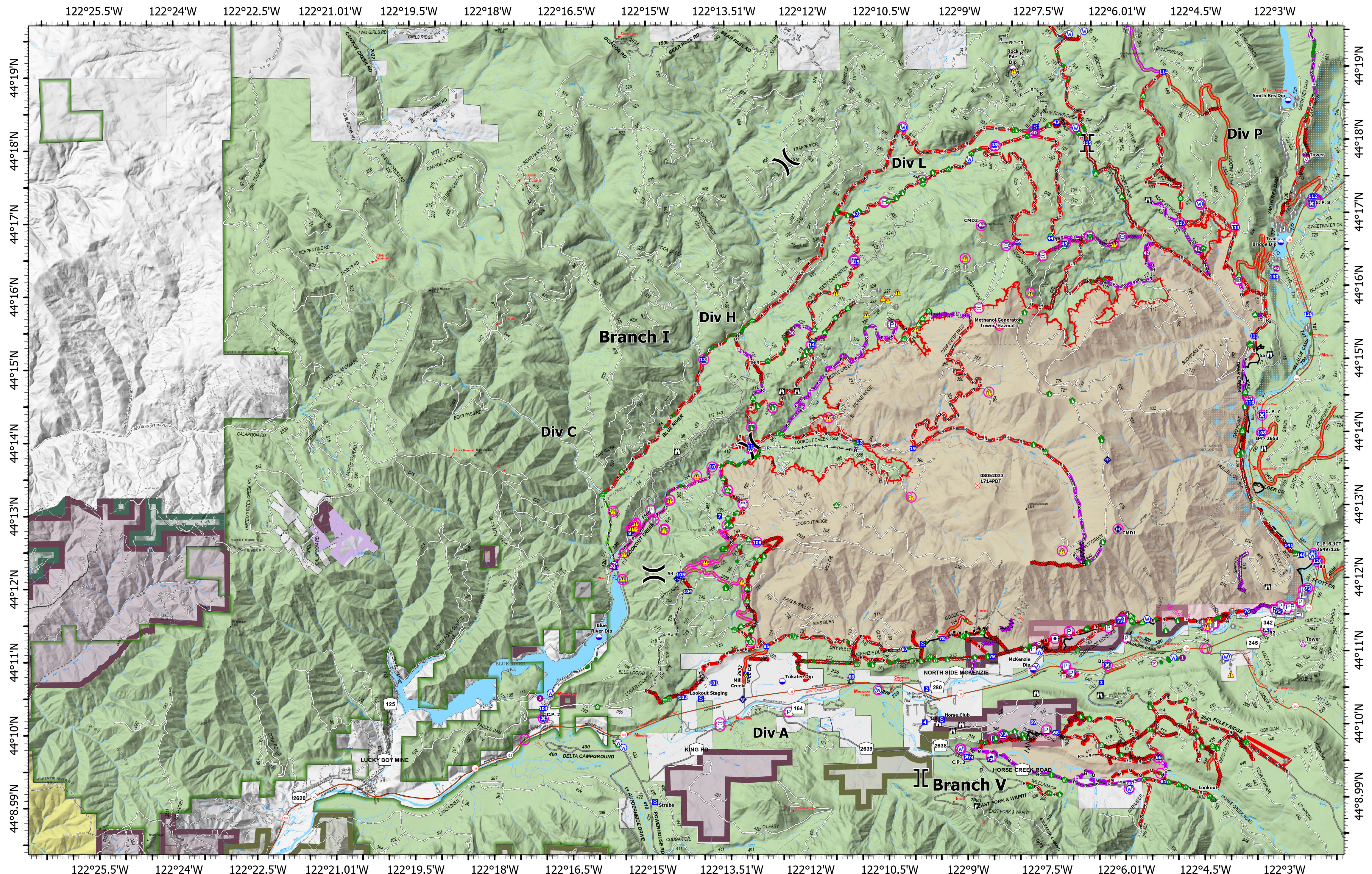
Lookout
 ORWIF-230327
 09/17/2023
Acres from IR & GPS
 24,843 acres at 9/15/2023 @ 1945


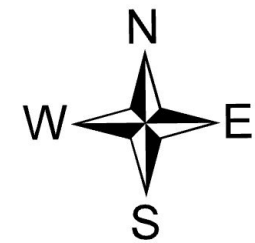

<ul style="list-style-type: none"> ○ In Use - Fire Management ○ In Use - Fire Management ○ Needs Assessment ○ Repair Needed ○ Completed - Inspected ○ No Repair Needed ○ In Use - Fire Management 	<ul style="list-style-type: none"> ● Repair Needed ○ Airstrip or Airport ○ Dip Site ○ Helispot X Division Break X Branch Break X Drop Point X Closure X Camp X Staging Area 	<ul style="list-style-type: none"> Ⓜ Lookout Ⓜ Hot Spot - Spot Fire Ⓜ Fire Origin Ⓜ Value at Risk Ⓜ Other Ⓜ Gate Ⓜ Bridge Ⓜ Water Development or Draft Site Ⓜ Stream Crossing 	<ul style="list-style-type: none"> Ⓜ Road Repair Ⓜ Resource Location Ⓜ Repair Point Ⓜ Landing or Log Deck Ⓜ Hazard Tree Ⓜ Dozer Push Ⓜ Culvert Ⓜ Clean Up Area Ⓜ Mobile Weather Unit Ⓜ Internet Access 	<ul style="list-style-type: none"> Ⓜ Repeater Ⓜ Safety Zone Ⓜ Hazard Ⓜ Water Source Ⓜ Other Property Ⓜ Pump Ⓜ Water Tank Ⓜ Completed Burnout Ⓜ Completed Dozer Line 	<ul style="list-style-type: none"> Ⓜ Completed Fuel Break Ⓜ Completed Hand Line Ⓜ Completed Mixed Construction Line Ⓜ Completed Road as Line Ⓜ Planned Dozer Line Ⓜ Access or Improved Road Ⓜ Fence Ⓜ Other 	<ul style="list-style-type: none"> Ⓜ Repair Line Ⓜ Road Repair Ⓜ Retardant Drop Ⓜ UAS Launch and Recovery Zone Ⓜ Contained Ⓜ Uncontained Fire Edge Ⓜ Wildfire Daily Fire Perimeter 	<ul style="list-style-type: none"> Ⓜ Franklin-Clarkson Timber Co LLC Ⓜ Giustina (Winberry) Ⓜ Oregon Dept of State Lands
---	--	---	--	--	---	--	---

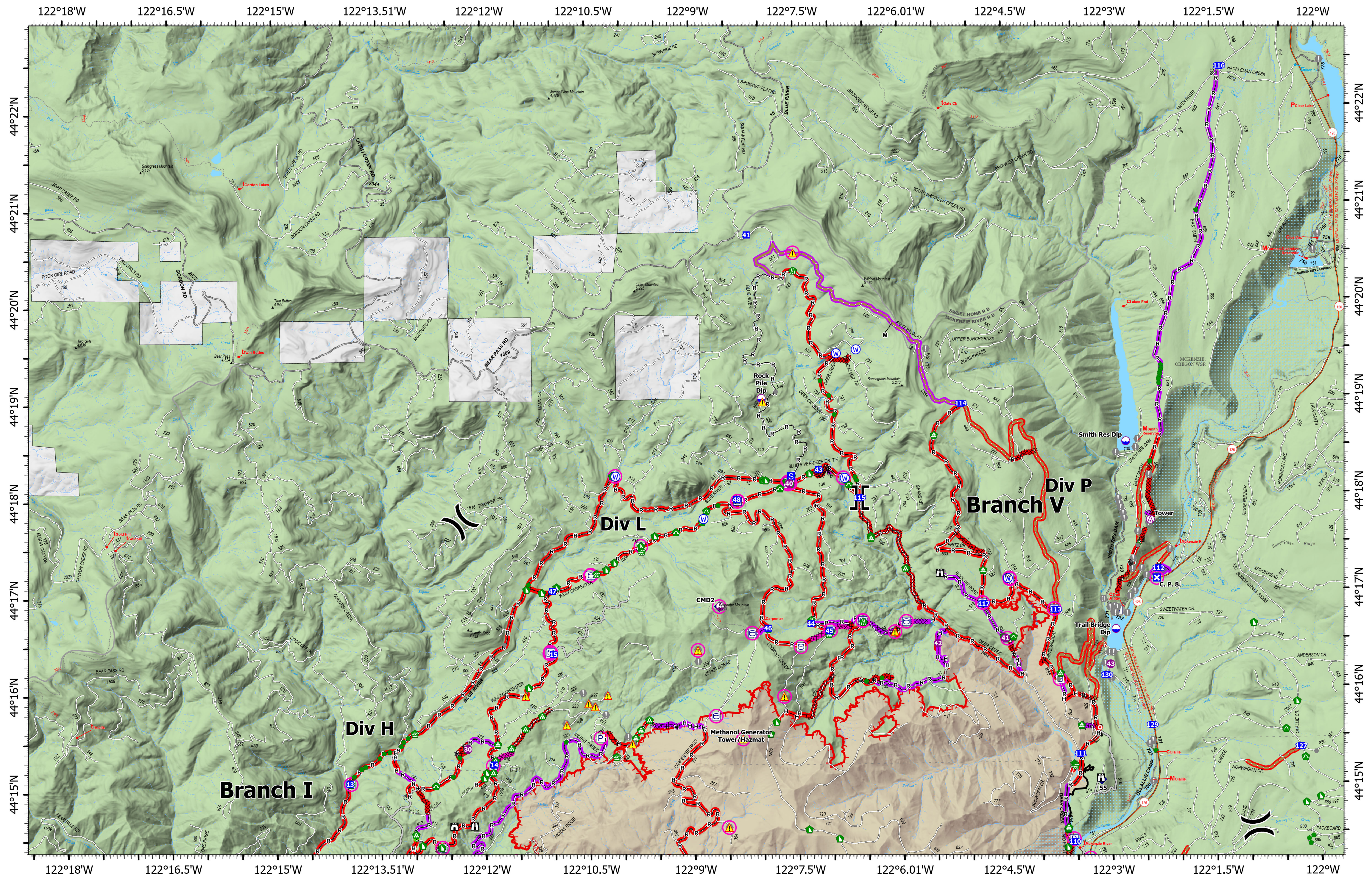
9/16/2023 2212
 North American 1983 Datum. LatLong Grid


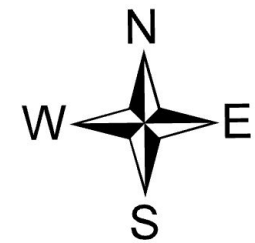

0 0.25 0.5 1 1.5 Miles

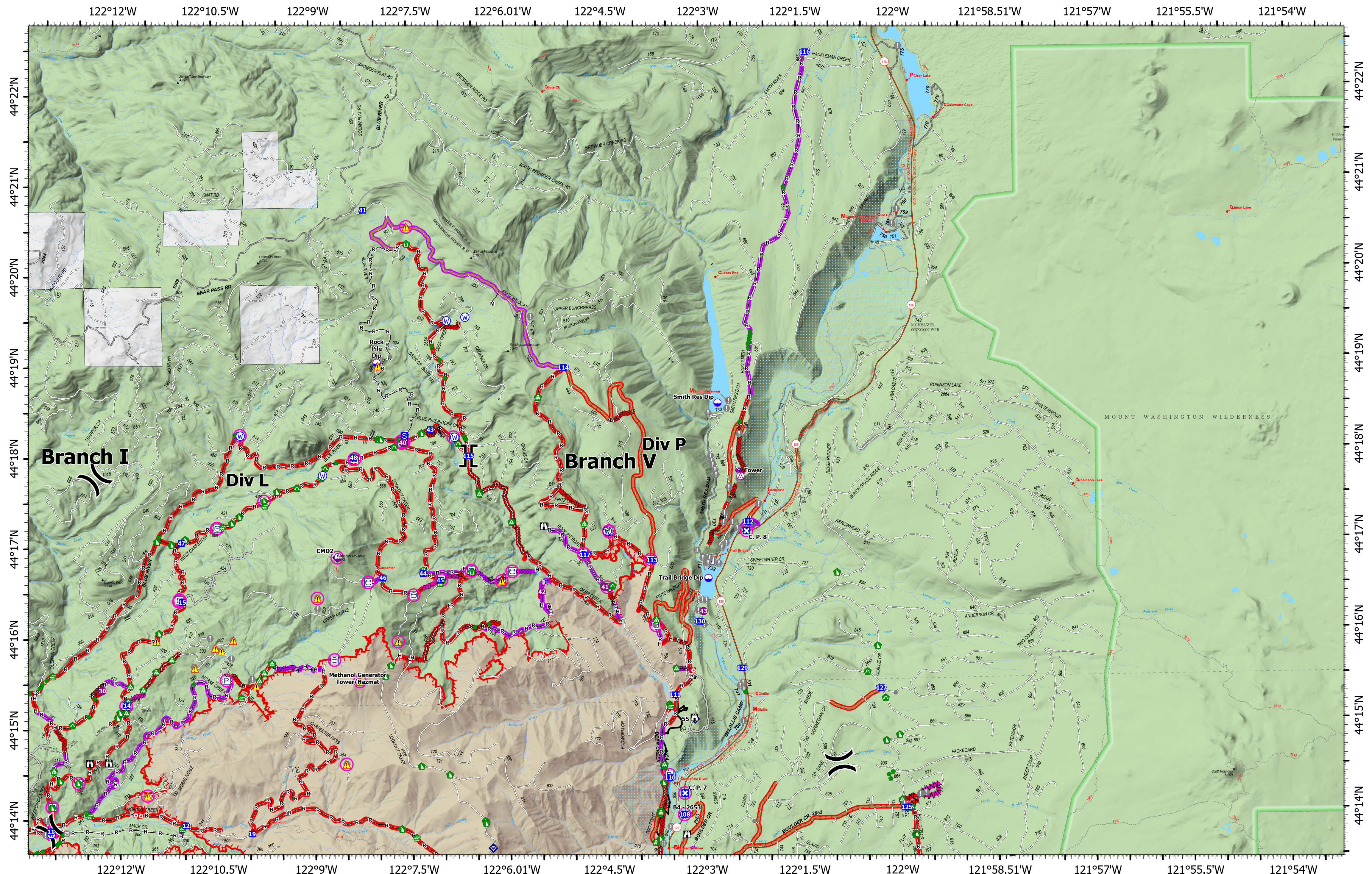
Repair
Div A



Repair Div C/Div H	<h1 style="text-align: center;">Repair</h1> <h2 style="text-align: center;">Lookout</h2> <h3 style="text-align: center;">ORWIF-230327</h3> <p style="text-align: center;">09/17/2023</p> <p style="text-align: center;">Acres from IR & GPS</p> <p style="text-align: center;">24,843 acres at 9/15/2023 @ 1945</p>		<ul style="list-style-type: none"> ○ In Use - Fire Management ○ In Use - Fire Management ○ Needs Assessment ○ Repair Needed ○ Completed - Inspected ○ No Repair Needed ○ In Use - Fire Management 	<ul style="list-style-type: none"> ● Repair Needed ● Other - See Comments ○ Aerial Hazard ○ Airstrip or Airport ○ Dip Site ○ Helispot ○ Fire Origin ○ Division Break Branch Break 	<ul style="list-style-type: none"> ■ Drop Point ■ Closure ■ Camp ■ Staging Area ■ Lookout ○ Hot Spot - Spot Fire ○ Road Repair ○ Value at Risk ○ Other 	<ul style="list-style-type: none"> ○ Gate ○ Bridge ○ Water Development or Draft Site ○ Structure Wrap ○ Stream Crossing ○ Clean Up Area ○ Mobile Weather Unit ○ Internet Access ○ Resource Location ○ Repair Point 	<ul style="list-style-type: none"> △ Hazard ○ Water Source ○ Other Property ○ Pump ○ Water Tank ○ Completed Burnout ○ Completed Dozer Line ○ Completed Fuel Break ○ Completed Hand Line 	<ul style="list-style-type: none"> — Completed Mixed Construction Line — Completed Road as Line — Planned Dozer Line — Access or Improved Road — Fence — Other — Repair Line — Road Repair 	<ul style="list-style-type: none"> — Retardant Drop — UAS Launch and Recovery Zone — Contained — Uncontained Fire Edge — Wildfire Daily Fire Perimeter — Cadore Timber Co — Franklin-Clarkson Timber Co LLC 	<ul style="list-style-type: none"> ■ Giustina (Winberry) ■ Oregon Dept of State Lands ■ Weyerhaeuser Timber Holdings Inc 		<div style="text-align: center;">  <p>9/16/2023 2214</p> <p>North American 1983 Datum. LatLong Grid</p> <p>0 0.250.5 1 1.5 2 Miles</p> </div>		Repair Div C/Div H
-------------------------------------	---	--	--	--	---	--	--	--	---	---	---	--	---	-------------------------------------



Repair Div L	<h1>Repair</h1> <h2>Lookout</h2> <h3>ORWIF-230327</h3> <h4>09/17/2023</h4> <p><i>Acres from IR & GPS</i> 24,843 acres at 9/15/2023 @ 1945</p>		<ul style="list-style-type: none"> ○ In Use - Fire Management ▬ In Use - Fire Management ▬ Needs Assessment ▬ Repair Needed ▬ Completed - Inspected ▬ No Repair Needed 	<ul style="list-style-type: none"> ○ In Use - Fire Management ● Other - See Comments ⚠ Aerial Hazard ⚠ Dip Site ⚠ Helispot ⚠ Sling Site) Division Break 	<ul style="list-style-type: none"> Branch Break ■ Drop Point ■ Closure ■ Staging Area ■ Lookout ● Hot Spot - Spot Fire ● Value at Risk ● Other 	<ul style="list-style-type: none"> ■ Bridge ■ Water Development or Draft Site ■ Road Repair ■ Repair Point ■ Landing or Log Deck ■ Dozer Push ■ Culvert 	<ul style="list-style-type: none"> ■ Mobile Weather Unit ■ Repeater ⚠ Hazard W Water Source ■ Other Property P Pump ■ Water Tank --- Completed Dozer Line 	<ul style="list-style-type: none"> ▬ Completed Fuel Break ▬ Completed Hand Line ▬ Completed Mixed Construction Line ▬ Completed Road as Line ▬ Access or Improved Road ▬ Other ▬ Repair Line 	<ul style="list-style-type: none"> ▬ Road Repair ▬ Contained ▬ Uncontained Fire Edge ▬ Wildfire Daily Fire Perimeter 				Repair Div L
	<p style="text-align: center;">9/16/2023 2217 North American 1983 Datum. LatLong Grid</p> <p style="text-align: center;">0 0.25 0.5 1 1.5 Miles</p>												

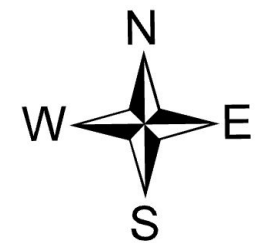


Repair
Div P


Repair
Lookout
ORWIF-230327
09/17/2023
Acres from IR & GPS
24,843 acres at 9/15/2023 @ 1945

- | | | | | | | |
|---|---|--|--|---|--|--|
| <ul style="list-style-type: none"> ○ In Use - Fire Management ▬ In Use - Fire Management ▬ Needs Assessment ▬ Repair Needed ▬ Completed - Inspected ▬ No Repair Needed ○ In Use - Fire Management | <ul style="list-style-type: none"> ● Other - See Comments ○ Dip Site ○ Helispot ○ Sling Site) Division Break ▬ Branch Break ▬ Drop Point ▬ Closure | <ul style="list-style-type: none"> S Staging Area ⦿ Lookout ⦿ Hot Spot - Spot Fire ⦿ Value at Risk ⦿ Other ⦿ Gate ⦿ Bridge ⦿ Water Development or Draft Site | <ul style="list-style-type: none"> ⦿ Road Repair ⦿ Repair Point ⦿ Landing or Log Deck ⦿ Fence - Cut/Damaged ⦿ Dozer Push ⦿ Culvert ⦿ Mobile Weather Unit ⦿ Internet Access ⦿ Repeater | <ul style="list-style-type: none"> ⚠ Hazard ⦿ Water Source ⦿ Other Property ⦿ Pump ⦿ Water Tank ⦿ Completed Dozer Line ⦿ Completed Fuel Break ⦿ Completed Hand Line | <ul style="list-style-type: none"> ▬ Completed Mixed Construction Line ▬ Completed Road as Line ▬ Access or Improved Road ▬ Other ▬ Repair Line ▬ Road Repair ▬ UAS Launch and Recovery Zone | <ul style="list-style-type: none"> ▬ Contained ▬ Uncontained Fire Edge ▬ Wildfire Daily Fire Perimeter |
|---|---|--|--|---|--|--|



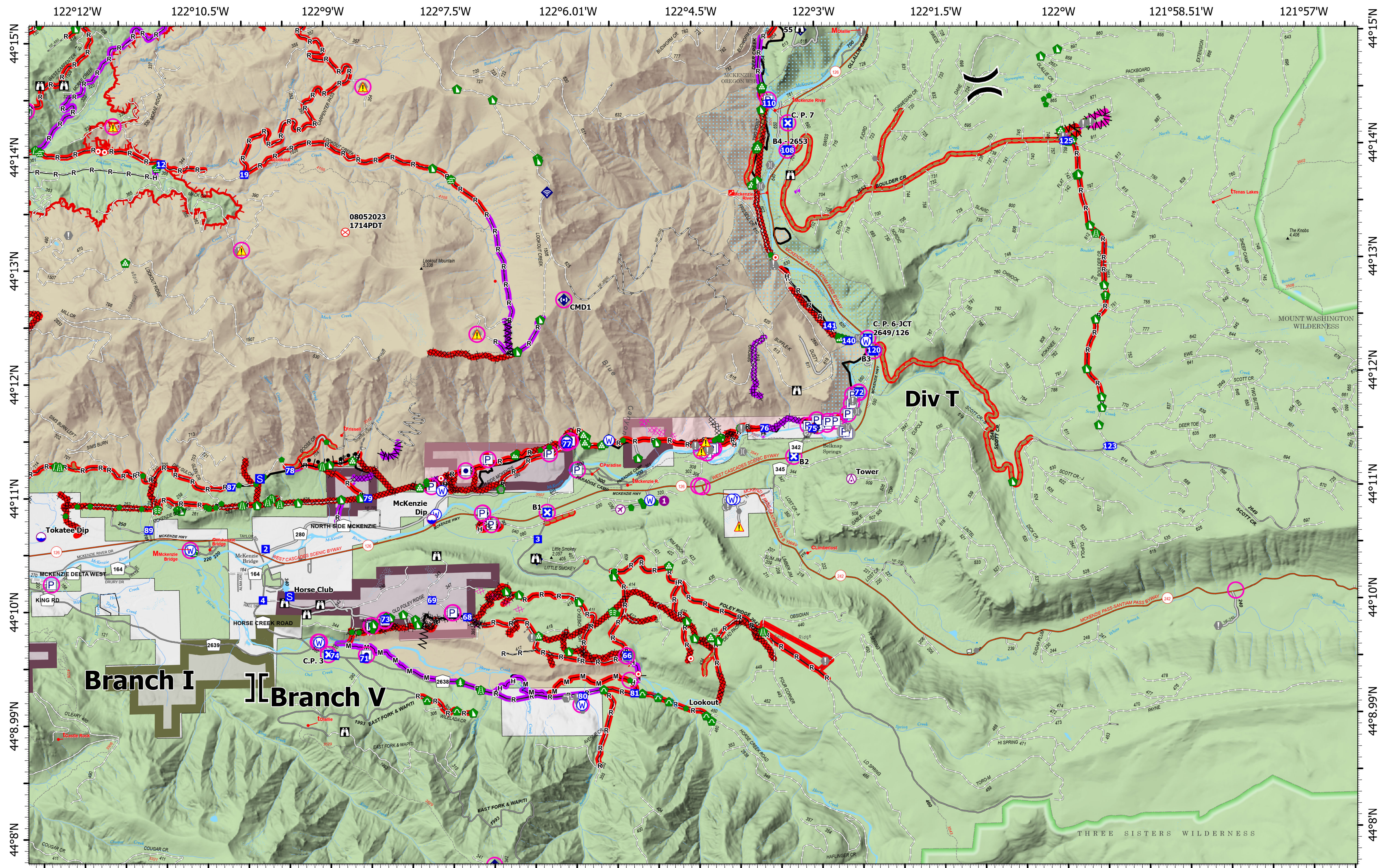


9/16/2023 2220
North American 1983 Datum. LatLong Grid



0 0.25 0.5 1 1.5 Miles

Repair
Div P



Repair

Lookout

ORWIF-230327
09/17/2023

Acres from IR & GPS
24,843 acres at 9/15/2023 @ 1945

<ul style="list-style-type: none"> ○ In Use - Fire Management ○ In Use - Fire Management ○ Needs Assessment ○ Repair Needed ○ Completed - Inspected ○ No Repair Needed ○ In Use - Fire Management 	<ul style="list-style-type: none"> ● Repair Needed ○ Other - See Comments ○ Aerial Hazard ○ Airstrip or Airport ○ Dip Site ○ Helispot) Division Break] Branch Break ■ Drop Point ■ Closure 	<ul style="list-style-type: none"> ■ Staging Area ■ Lookout ○ Hot Spot - Spot Fire ○ Fire Origin ○ Value at Risk ○ Other ○ Gate ○ Bridge ■ Water Development or Draft Site ■ Closure 	<ul style="list-style-type: none"> ■ Structure Wrap ■ Stream Crossing ■ Road Repair ■ Resource Location ■ Repair Point ■ Landing or Log Deck ■ Hazard Tree ■ Fence - Cut/Damaged ■ Dozer Push ■ Culvert 	<ul style="list-style-type: none"> ■ Clean Up Area ■ Mobile Weather Unit ■ Internet Access ■ Repeater ○ Hazard ○ Water Source ○ Other Property ○ Pump ○ Water Tank 	<ul style="list-style-type: none"> ■ Completed Burnout ■ Completed Dozer Line ■ Completed Fuel Break ■ Completed Hand Line ■ Completed Mixed Construction Line ■ Completed Road as Line ■ Planned Dozer Line ■ Access or Improved Road 	<ul style="list-style-type: none"> --- Fence --- Other --- Repair Line --- Road Repair --- Retardant Drop --- UAS Launch and Recovery Zone --- Contained --- Uncontained Fire Edge 	<ul style="list-style-type: none"> --- Wildfire Daily Fire Perimeter --- Franklin-Clarkson Timber Co LLC --- Giustina (Winberry)
---	---	--	---	--	--	--	---

9/16/2023 2222
North American 1983 Datum. LatLong Grid

0 0.25 0.5 1 1.5 Miles

Repair

Div T